



**ANNA STAR CONTRACTING & INDUSTRIAL  
CONSTRUCTION, SERVICES**

*Quality Matters, We Do Believe In Quality*

# COMPANY PROFILE



[info@ana-grp.com](mailto:info@ana-grp.com)  
[+966558490607](tel:+966558490607)  
[www.ana-grp.com](http://www.ana-grp.com)



## ANNA STAR

Design, Engineering, Procurement, Constructions, General Civil Constructions, Infrastructure, General Contracting Civil, Buildings, Architectural, Electrical, Instrumentation, MEP and Mechanical Works for various sectors. Integrated Industrial Security System & Services. Onshore & Offshore Constructions and Rig Construction.



## ANNA STAR MAIN CONTRACTOR —

- ✓ Civil Works, Earth Works, Site Preparations, Road Works.
- ✓ RCC Buildings Constructions, (Chemical, Control/Admin, Substation, Office, Commercial Centers & Residential). Electro-Mechanical Works, MEP.
- ✓ IT & Communications, Industrial Security Systems Integration, Industrial Security Services, Telecommunication, IDAS, LRDAS, CCTV, Access, ISP, OSP Works.
- ✓ Piping, Fabrication, Mechanical Equipment Erection.
- ✓ Electrical & Instrumentation, Painting, Pre Commissioning.
- ✓ Site Temporary Facilities – Offices, Warehouses & Camps.
- ✓ Construction Supports & Plant Maintenance/Shutdowns, General Services.
- ✓ Trading, Materials Supplier, Logistics and Operations.
- ✓ Supplemental Resources, Manpower/Equipment Support and Service Provider.

**BUSINESS PORTFOLIO**

**SUMMARY****ANNA STAR CONTRACTING & INDUSTRIAL CONSTRUCTION, SERVICES**

**Established in 1982**

**100% Saudi Owned**

**Independent Constructors**

**Multi National and Multi Discipline Workforce**

**Operating Through-out the Middle East**

**Employing 929 Professional and Support Staff in Saudi Arabia.**

**Long And Proven Track Record for Projects in Saudi Arabia**

**Committed to Saudization Programme, VAT & IKTVA**

**Committee to Training of staff**



## WHO WE ARE / WHAT WE DO

**We ANNA STAR Contracting & Industrial Construction, Services are EPC Constructors.**

**ANNA STAR** recognized leader in reliability and innovation for mega projects across the Kingdom in the fields of civil & building, oil & gas, petrochemicals, power and water. Our Core Business as follows:

Our Core Business as follows: ANNA STAR undertake the projects as EPC, Main Contractor with overall responsibility for the execution of the works on a turnkey basis, which including design & build, general contracting and constructions.

- Design, Engineering, Procurement, Constructions, General Civil Constructions, Infrastructure, General Contracting Civil, Buildings, Architectural, Electrical, MEP and Mechanical Works for various sectors. Integrated Industrial Security System & Services. Onshore & Offshore Constructions and Rig Construction.
  - Earth Works, Site Preparations.
  - RCC Buildings Constructions, (Chemical, Control/Admin, Substation, Office, Commercial Centers & Residential).
  - Electro-Mechanical Works, MEP, IT & Communications, Industrial Security System, IDAS
  - Piping, Fabrication, Mechanical Equipment Erection,
  - Electrical & Instrumentation, Painting, Pre Commissioning,
  - Site Temporary Facilities – Offices, Warehouses & Camps.
- Construction Supports & Plant Maintenance/Shutdowns, General Services.

ANNA STAR are in confidence with you that our services would fulfill your requirement. By combining technical expertise with immense knowledge of local markets and rich human capital, ANNA STAR ensures ample resources for the most demanding construction, operations, or maintenance projects.

# VISION & MISSION



## COMPANY VISION & MISSION STATEMENT

### VISION

To be the leader in our industry and the major player in each of our market segments.  
To be the leading provider of quality construction and engineering services in the Middle East.

### MISSION

- To meet the requirements and always strives to exceed the expectations of our Clients, Shareholders and Employees.
- To overcome the external and internal issues associated with the organization's Business and Scope of work, and to fulfill all the relevant requirements.
- To form long-term relationships of value with our clients and partners by using quality construction and engineering solutions and employing the best resources and latest techniques.

### VALUES

- Our values stand on foundation of Safety & Integrity.
- People are the heart of our business.
- Clients are our Valued Partners.
- Performance excellence is our commitment.

## EPC CONSTRUCTOR

Design, Engineering, Procurement, Constructions, General Civil Constructions, Infrastructure, General Contracting Civil, Buildings, Architectural, Electrical, MEP, Industrial Security and Mechanical Works for various sectors. Onshore & Offshore Constructions.

- Civil, Earth Works, Site Preparations.
- Site Temporary Facilities - Offices, Warehouses & Camps.
- RCC Buildings Constructions.
- Electro-Mechanical Works, MEP.
- Industrial Security Systems Integration, IT & Communications, Industrial Security Services, IDAS, Telecommunication.
- Piping, Fabrication, Mechanical Equipment Erection.
- Electrical & Instrumentation, Painting, Pre-Commissioning.
- Construction Supports & Plant Maintenance / Shutdowns, General Services.
- Communications Work - Inside Plant (ISP).
- Communication Work - Outside Plant (OSP).
- Water Treatment.
- EPC
- General Contractings.
- Solution.
- Site Development.
- Industrial Security.
- ISP & OSP Communication.
- Site Temporary Facilities.
- Infrastructure Networks.
- Civil Works.
- Building Construction
- Architectural Finishes
- Electro-mechanical
- Piping & Fabrication
- Electrical
- Instrumentation
- Industrial Plants
- Pipelines
- Mechanical Equipment
- Erection
- HVAC System
- Fire Fighting System
- General Maintenance





## SERVICES



	Infrastructure & Heavy Industry	High Tech & Iconic Buildings	Oil Gas, & Petrochemicals	Water, Power & Solar System,	IT, Communication, and Industrial Security Services
SERVICES					
Design, Engineering, Procurement & Construction	√	√	√	√	√
Commissioning Turnover Complete	√	√	√	√	√
FMCG – Facilities	√	√	√	√	√
DISCIPLINES					
General Contracting – Civil, Buildings Constructions – Substation, Gas Stations	√	√	√	√	√
Site Temporary Facilities, Offices, Camps, Warehouses & Utilities Services	√	√	√	√	√
General Constructions – Civil Structural & Architectural	√	√	√	√	√
MEP – Mechanical, Electrical, Instrumentation & Plumbing	√	√	√	√	√
Mechanical & Electrical Building Services	√	√	√	√	√
Piping, Fabrication & Erection	√	√	√	√	√
IT, Communication, IDAS, and Industrial Security Services	√	√	√	√	√
General Maintenance, Plant Shutdown	√	√	√	√	√



CIVIL CONSTRUCTION



BUILDINGS



ELECTRO MECHANICAL



MEP, IT &amp; IDAS



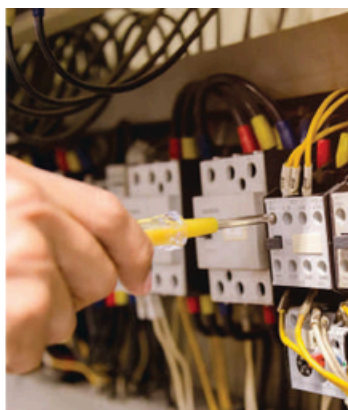
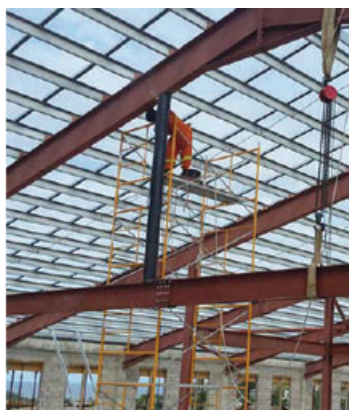
STRUCTURAL STEEL FABRICATION

## ANNA STAR ACTIVITIES CAN BE CATEGORIZED IN THE FOLLOWING AREAS:

- Civil Construction, Rcc Buildings Including Structural And Architectural
- Plant Fabrication And Installation
- Electro/mechanical Projects
- Security, It, Communication & Idas System
- Steel Fabrication
- Temporary Facilities
- Drilling And Blasting Services
- Operation And Maintenance
- Camps, Catering And Warehouse Management

## LIST OF ACTIVITIES

- Turnkey Industrial Project
- General Construction
- Site Preparation
- Precast Concrete
- Structural Steel Erection
- Steel Fabrication
- Mechanical / Piping Works
- Electrical Works
- Maintenance Of Industrial Plants
- Temporary Facilities
- Manpower & Heavy Equipment Rental
- Drilling And Blasting Services
- Prefabricated House & Office
- Transportation Services



## CIVIL CONSTRUCTION

ANNA STAR track record includes successful completion of the civil works for major industrial and multi-discipline projects that include desalination and power plants, petrochemical and gas installations, cement plants, utility installations, factories and electrical substations. It has also completed high quality industrial and residential complexes, hospitals, administrative & institutional buildings.

In such projects ANNA STAR provided worldwide material purchasing, handling, transportation and storage. Such activities and expertise, in all aspects, were provided in-house by multidiscipline highly qualified engineers, technicians and construction staff, and company-owned equipment and construction materials.



## MECHANICAL WORKS

ANNA STAR has successfully completed major mechanical, industrial and multi-discipline projects which include desalination and power plants, petrochemical and gas installations, cement plants, utility installations, factories.

The Works in such projects covered total equipment, steel structure, piping, insulation, painting, electrical and instrumentation erection works.



## PROJECT MANAGEMENT CAPABILITY

ANNA STAR has accumulated a vast experience in managing construction projects throughout the Middle East, where work has been carried out to exacting technical specifications, difficult schedules, and under the tough constraints of lump-sum fixed prices. Under these conditions, the company has assumed total responsibility for the overall performance of all the disciplines involved including structural works; electrical, air-conditioning and plumbing work; internal architecture and finishing works; landscaping and external works. Hence ANNA STAR Construction has acquired a multidisciplinary project-management capability independent from its field construction expertise.

As a result of this project management know-how, ANNA STAR has frequently been asked to act as Project Manager or Owner's Representative on special building projects belonging to affiliated companies.

In this role, ANNA STAR seconded senior project-management and construction-management personnel to each project. These staff members acted on the owner's behalf and coordinated the work of the many contractor and sub-contractors. In most instances, ANNA STAR Construction personnel established detailed schedules for the project and assisted the contractor in maintaining achievement levels, observing completion dates and keeping to the budgets. Additional responsibilities included gaining approvals from municipalities and local authorities at various stages throughout the project.



## INTRODUCTION

ANNA STAR is established since 1982 and is a wholly owned Saudi Arabian organization, within a Saudi based International Conglomerate. It is one of the leaders in all disciplines of Civil, Mechanical, Pipeline and related Construction Work in the Kingdom of Saudi Arabia.

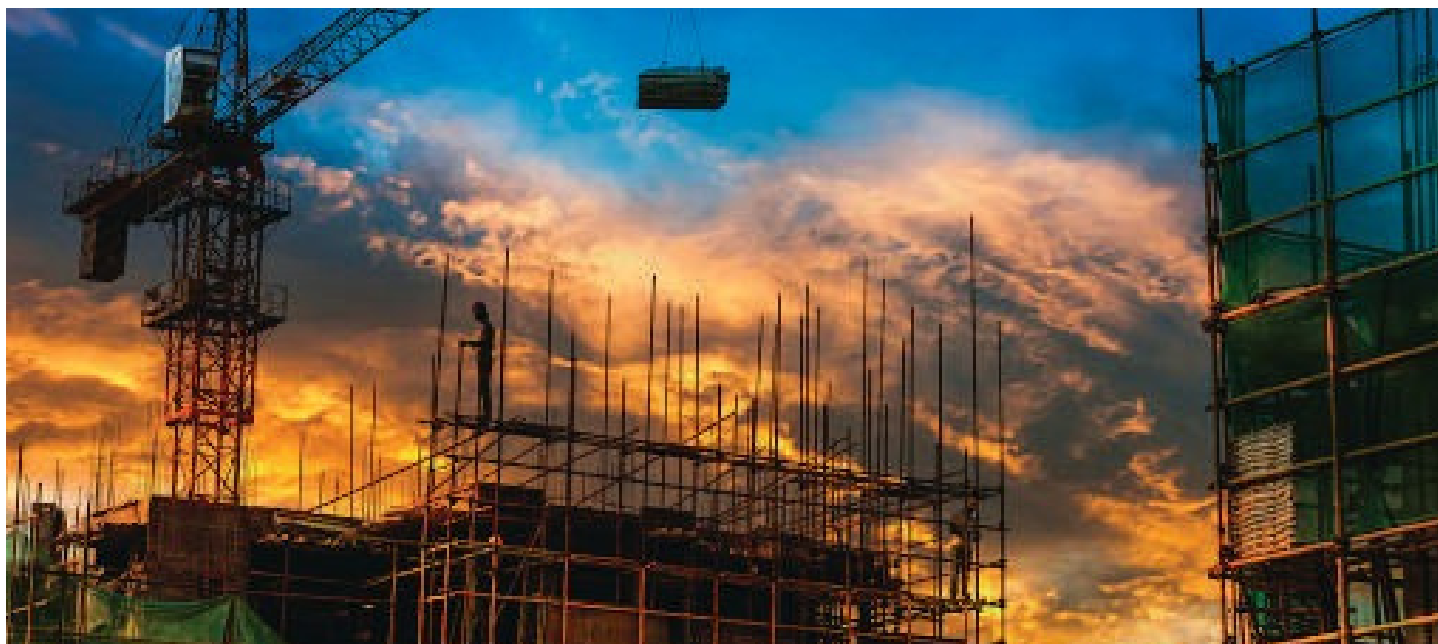
ANNA STAR has accumulated extensive experience over the last Twenty Four Years of Operation, with successful implementation of large Construction, Fabrication, Pipeline, and Electro-Mechanical Projects for major Clients. Among the contracts executed are constructions of many miles of cross-country pipelines, trunklines, flowlines, water injection lines, wellheads, cathodic protection systems, tie-ins, hot tapping into live lines, cold pipe bending ; In-plant fabrication, installation, electrical & instrumentation, maintenance, rehabilitation and related civil works throughout the Kingdom.

ANNA STAR has the Reputation, Expertise, Manpower, Equipment and Resources, to professionally execute large scale projects economically and on schedule to the entire satisfaction of its clients:-

**Reputation:** Quality, Reliability, Integrity, Honesty, Confidence & Hard Work are all the ingredients that have contributed to the Company's renowned reputation, of getting the job done to perfection within budget and on time.

**Expertise:** The execution of many demanding projects in the past, over the most inhospitable terrain and adverse weather conditions in the field of civil construction and pipe lines construction has provided the Company with a wealth of experience and invaluable expertise, second to none.

**Manpower:** Through stringent screening and selection of highly qualified & specialized personnel the Company have a cross section of specialists and craftsmen at its disposal who are dedicated to work as a team, to fulfill contractual obligations.



**Equipment:** The impressive range of machinery, equipment and vehicles owned by the Company is kept in the best possible condition by well trained and competent engineers and mechanics, in complete readiness for deployment at any given time.

**Resources:** As part of an international conglomerate, the Company has limitless resources at its disposal to meet any challenge. It has the capability and confidence to carry out any size project from the straight forward to the most demanding.

The recent changes and management style, together with the expansion programme has extended ANNA STAR "Scope of Activities" in pipeline and related construction. It specializes in:-

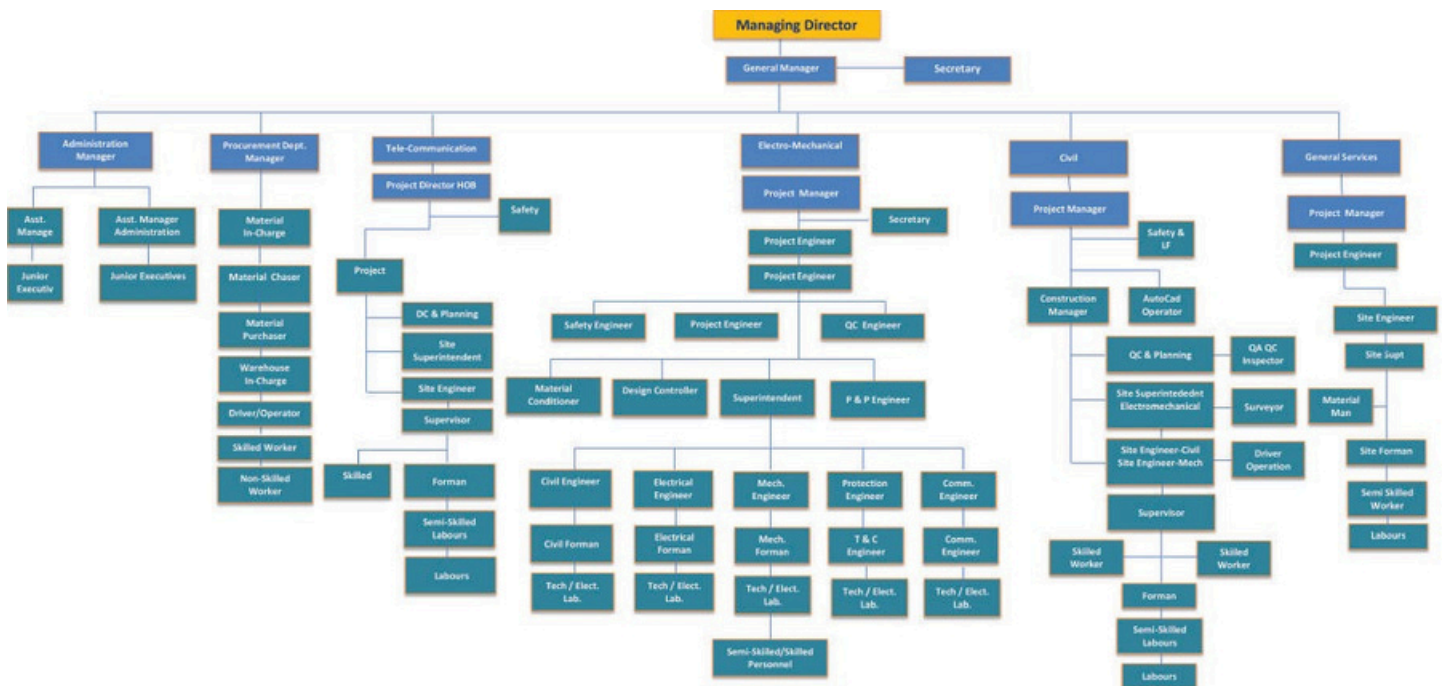
- |  |   |
|--|---|
| <input checked="" type="checkbox"/> Civil Construction                               | <input checked="" type="checkbox"/> Related Civil Work                        |
| <input checked="" type="checkbox"/> Pipe laying (buried and above ground)            | <input checked="" type="checkbox"/> Cathodic Protection System                |
| <input checked="" type="checkbox"/> Plant fabrication and installation               | <input checked="" type="checkbox"/> Plant electrical and instrumentation work |
| <input checked="" type="checkbox"/> Electro-Mechanical                               | <input checked="" type="checkbox"/> HVAC                                      |
| <input checked="" type="checkbox"/> Thrust boring (up to 48" dia)                    | <input checked="" type="checkbox"/> Maintenance                               |
| <input checked="" type="checkbox"/> Shrink sleeve installation for epoxy coated pipe |   |

To achieve its objectives the Management is hypercritical in its demands and expects very high standards from its qualified and experienced multinational workforce, who have the enthusiasm and determination to perform their duties to the best of their ability.

The Manpower is carefully selected from the Kingdom, The Philippines, India, Pakistan, Bangladesh and Sri Lanka, while the Management consists of professionally qualified and experienced Saudi Arabian nationals and expatriates from United States of America, Canada and Egypt. The current total numbers of employees are 929 personnel.



# ORGANIZATION



ISO 9001:2008  
 ISO 14001:2004  
 OHSAS 18001:2007



**GENERAL CONTRACTING CONSTRUCTION**  
**&**  
**ELECTRO MECHANICAL CONTRACTOR**

## ABOUT ANNA STAR

ANNA STAR is a subsidiary of a highly specialized Global Group of Companies. ANNA STAR is a leading general contracting and provider of construction and engineering support services to public and private sector customers across a wide of market sector in Saudi Arabia. Our objective is to build and maintain value for our range of stakeholder groups.

ANNA STAR offers a full range of general contracting, construction and engineering support services options, from major building and infrastructure projects through to smaller building and civil engineering works, mechanical, piping and structural fabrication works. We can offer single service delivery or tailor integrated solutions to meet precise customer needs.

Backed by our years of experience, expertise, unique delivery capability, highly motivated, talented people, and our commitment to high quality and standards, we offer customers comprehensive approaches including general contracting, construction management and property development solution

## GENERAL CONTRACTING, CONSTRUCTION MANAGEMENT SERVICES

As part of a Global Group of Companies, ANNA STAR provides multidisciplinary and comprehensive professional services that enable our clients to succeed across a wide range of goals regardless of size or scope of complexity our professionals contribute state-of-the-art knowledge of equipment and practices, representing all of the disciplines involved in project execution and development. Our core services include general contracting, construction management, property development and real estate management.

We integrate all of the above into total program Management. With our supervisory skills, global resources and diverse expertise, ANNA STAR is acknowledged as one of Saudi Arabia's top program delivery Companies-seeing projects through their entire life cycle from concept to product Realization.



## GENERAL CONTRACTING, CONSTRUCTION

### ELECTRO MECHANICAL CONTRACTOR SITE TEMPORARY FACILITIES

ANNA STAR is a Construction and Buildings Contractor. ANNA STAR is fully equipped to handle all types of general contracting and in addition has design, build, operate and management capabilities required to handle any “turn key” project. By providing an efficient ‘one –stop’ service, ANNA STAR can ensure maximum consistency between the design and build stages and offer clients many other advantages with regard to project coordination, scheduling and on-time quality delivery of all types of projects

### CONSTRUCTION MANAGEMENT

ANNA STAR offers professional construction management services that are tailored to the size and complexity of any given project, backed by a corporate commitment to total quality management. ANNA STAR construction engineering and supervisory services personnel are experts in management, supervision, monitoring and documenting the progress and quality of construction work.

### GENERAL CONTRACTING

Through its broad range of general contracting capabilities, ANNA STAR helps make tomorrow a better place. It is a leader in integrated General Contracting solutions for buildings, utility infrastructures and services, Engineering, procurement, construction, project management. At ANNA STAR , we do it all, and we strive to do it best. At the heart of every construction job is engineering, and ANNA STAR makes sure it’s done intelligently-with constructability in mind.

The success of any project also depends on getting the right equipment, goods and services at the right time, and at the right price. ANNA STAR Size and reach enable us to procure nationally and globally, ensuring the Best possible deals.

Led by a dynamic team of experienced professionals founded on a solid Tradition of remarkable achievements in projects completed throughout Saudi Arabia, ANNA STAR sets a quality and performance benchmark For Civil Engineering, Building, Architectural, Mechanical, Electrical, Piping, Fabrication, Refurbishment & Renovation Works. Engineering, procurement, construction, project management. At ANNA STAR , we do it all, and we strive to do it best.

At the heart of every construction job is engineering, and ANNA STAR makes sure it’s done intelligently-with constructability in mind. The success of any project also depends on getting the right equipment, goods and services at the right time, and at the right price. ANNA STAR Size and reach enable us to procure nationally and globally, ensuring the

Best possible deals. Led by a dynamic team of experienced professionals founded on a solid Tradition of remarkable achievements in projects completed throughout Saudi Arabia, ANNA STAR sets a quality and performance benchmark

For civil engineering, building, architectural, mechanical, electrical, Refurbishment and renovation works.

## CONSTRUCTION MANAGEMENT

ANNA STAR offers a board range of pre-construction planning and Construction management services specifically tailored to meet the unique requirements of a client's project. At the core of ANNA STAR CONSTRUCTION Management success are teams of professionals collaborating with in a proven process of well tested project management methods and construction management solutions that are continuously monitored and reviewed against industry best practices.

### MAJOR CONSTRUCTION MANAGEMENT APPROACHES ANNA STAR CAN OFFER:

- Pre-construction Planning (Corpceptual cost Modeling, basis of design Estimates & Tracking, value Engineering studies/recommendations, Life Cycle Cost Studies, Milestone & CPM Schedule Development)
- Construction Management (Pre-construction Management, Contract Administration, Owner/Client consultation, Guaranteed maximum Price Development, Schedule and Phasing Management, Financial/Insurance Management, Procurement/Contract Award, Project Reporting, Commissioning & Start-up, Punch list/Close-out)
- Design Build (Single source design/construct management, CPM Schedule development, construction, QC/QA management)



## PRODUCTS AND SCOPE OF SERVICES

CONSTRUCTION, INCLUDING CIVIL (STRUCTURAL AND ARCHITECTURAL) ELECTRO/MECHANICAL PROJECTS

### GENERAL CONTRACTING

- |   |   |
|---|---|
| <input checked="" type="checkbox"/> Integrated Contracting      | <input checked="" type="checkbox"/> Infrastructure Complexes. |
| <input checked="" type="checkbox"/> Solution. Site Development. | <input checked="" type="checkbox"/> Residential Complexes.    |
| <input checked="" type="checkbox"/> Civil Engineering Works.    | <input checked="" type="checkbox"/> Commercial Centres.       |
| <input checked="" type="checkbox"/> Building Construction.      | <input checked="" type="checkbox"/> Offices.                  |
| <input checked="" type="checkbox"/> Architectural Finishes.     | <input checked="" type="checkbox"/> Refurbishment.            |
| <input checked="" type="checkbox"/> Procurement.                |   |



### ELECTRO MECHANICAL WORKS

- Mechanical & Piping.
- Structural Fabrication.
- Structural Steel Erection.
- Steel Fabrication.
- Electrical & Instrumentation.
- Maintenance Of Industrial Plants Development.



### CONSTRUCTION

- Pre-construction Planning.
- Value Engineering Studies.
- Life Cycle Cost Studies Milestones & Cpm Schedule Development.
- Contract Administration Schedule And Phasing Management.
- Contract Award.
- Project Reporting.
- Commissioning & Start-up Single Source Design Construct Management.





## PREFABRICATED BUILDING SPECIFICATION

### Section 1: Design Loads

Design Loads: (Refer to Section 2 'Applicable Codes' of this offer).		
1	Design Live Load on roof	80 kg/m <sup>2</sup>
2	Ground Floor Live Load	250 kg/m <sup>2</sup>
3	Dead Load	150 kg/m <sup>2</sup>
4	Wind Speed	140 km/h

### Section 2: Applicable Codes

#### A- Industry Standards and Codes.

American Standards for Testing and Materials (ASTM)  
 American Iron & Steel Institute (AISI)  
 International Building Code (IBC)  
 International Plumbing Code  
 National Electric Safety Code (NEC)  
 NFPA 13 Fire Fighting Code  
 NFPA 72 National Fire Alarm Code

#### B- Applicable Software.

Frame Cad Pro Design.  
 Frame Cad Detailer.  
 Prokon Design and Analysis.  
 Safe 12 Design and Analysis

#### C- Frame Cad Codes for Structure

#### D- Welding Code:

AWS D1.1

### Section 3: Skid Framing

Skid steel framings will be cleaned and painted with two coats of grey alkyd paint.

## Section 4: General Material Specifications

o.	PARAMETERS	BUILDING SPECIFICATIONS
1.0	FOUNDATION	
1.1	Steel Legs	- Individual building units are fit with 300mm legs cut into IPE AA 120mm I-beams. Steel legs are painted with Two coats of Grey Oxide (alkyd based) paint to protect against rust.
1.2	Concrete Foundation	- Joint units rest on RAPCO's trapezoidal precast concrete blocks, 30 cm or 50cm high. The base dimension is 35cm x 30 cm and the top 22cm x 20cm.
2.0	BASE- CHASSIS	
2.1	Base Frame Structure	<ul style="list-style-type: none"> <li>- The main supporting skids are IPE AA 120mm (for individual units) and 140mm (for joint units) I-section main beams along the perimeter length of the building and connected laterally with 120mm/140mm I-section cross member intermediate beams spaced according to the requirement of load distribution.</li> <li>- Two lifting holes 80 mm dia. are provided on the longitudinal sides of the building unit.</li> <li>- All structural steel is painted with Two coats of Grey Oxide (alkyd based) paint to protect against rust.</li> </ul>
3.0	FLOOR DECK	
3.1	Structure Joists and Studs	- The floor joists structure are high tensile Galvanized Steel C-profile, cold rolled, 89mm x 41mm. Thickness and spacing as per the structural calculations (live load, dead load) and floor level (ground, first). frames set in place in the chassis to form one integral frame
3.2	Flooring	- Fiber cement board 18mm nominal thick, single layer, resistant to fire, water, rot and fungus and securely fastened to the underneath steel structure.
3.3	Floor Finish	<p><i>Dry area floor finishing:</i></p> <ul style="list-style-type: none"> <li>- Vinyl tiles (PVC) 300mm x 300mm x 1.6mm thick in. Color as per RAPCO available stock.</li> <li>- Commercial carpet roll 4mm thick. Color as per RAPCO available stock.</li> <li>- Commercial carpet roll (Mehrab design) for Mosque units. Color as per RAPCO available stock.</li> </ul> <p><i>Wet area floor finishing:</i></p> <ul style="list-style-type: none"> <li>- Vinyl roll of 1.6mm thick. Color as per RAPCO available stock.</li> </ul>
4.0	EXTERNAL WALLS	

4.1	Structure	<ul style="list-style-type: none"> <li>- Walls shall be constructed of high tensile Galvanized Steel C-profile, cold rolled, 89mm x 41mm C studs, braces and runners. Thickness and spacing as per frame cad design.</li> <li>- All openings for doors, windows and air-conditioners are framed and reinforced.</li> </ul>
4.2	Exterior Wall Cladding & Finish	<ul style="list-style-type: none"> <li>- 29 gauge pre-painted low rib embossed metal sheet white color firmly fixed to 6mm cement boards, both securely fastened to the steel structure.</li> <li>- All trims are matching with the exterior cladding color.</li> </ul>
4.3	Exterior Wall Insulation	<ul style="list-style-type: none"> <li>- Blanket fiberglass, 100 mm thick with aluminum foil.</li> <li>- Vapor barrier, 10 kg/m<sup>3</sup> density,</li> <li>- Thermal resistance 2.27 m<sup>2</sup>k/w, placed in between studs.</li> </ul>
4.4	Wall Finish (Interior)	<ul style="list-style-type: none"> <li>- Interior walls in dry areas shall be cladded with 16mm thick fire rated beveled edge gypsum board finished with water – based paint.</li> <li>- Wet areas and private toilets' finishes: 12.50 mm fire &amp; moisture resistant gypsum board topped by 4mm water resistant, non-toxic and chemical resistant PVC foam board.</li> </ul>
4.5	Bottom Skirting	<ul style="list-style-type: none"> <li>- 29-gauge pre-painted low rib embossed metal sheet, white color or same material as external cladding, installed around the building perimeter to cover the open space between ground and bottom of building.</li> <li>- Removable expandable sheet panels, 600 x 400 mm, for maintenance and ventilation.</li> </ul>
<b>5.0</b>	<b>INTERNAL WALLS</b>	
5.1	Structure	<ul style="list-style-type: none"> <li>- Walls shall be constructed of high tensile Galvanized Steel C-profile, cold rolled, studs, braces and runners .Stud spacing 610mm center-to-center. Sectional dimensions 89 x 41 x 0.75mm for load bearing walls, and 63 x 41 x 0.75mm for non-loading bearing walls. Walls extend to the ceiling level.</li> <li>- All openings for doors, windows and air-conditioners are framed and reinforced.</li> </ul>
5.2	Wall Finish	<ul style="list-style-type: none"> <li>- Interior walls in dry areas shall be cladded with 16mm thick fire rated beveled edge gypsum board finished with water – based paint.</li> <li>- Wet areas and private toilets' finishes: 12.50 mm fire &amp; moisture resistant gypsum board topped by 4mm water resistant, non-toxic and chemical resistant PVC foam board.</li> </ul>
5.3	Common Toilets Partition	<ul style="list-style-type: none"> <li>- Water resistant, 15mm thick non-toxic and chemical resistant PVC foam board.</li> </ul>
<b>6.0</b>	<b>ROOF / CEILING</b>	



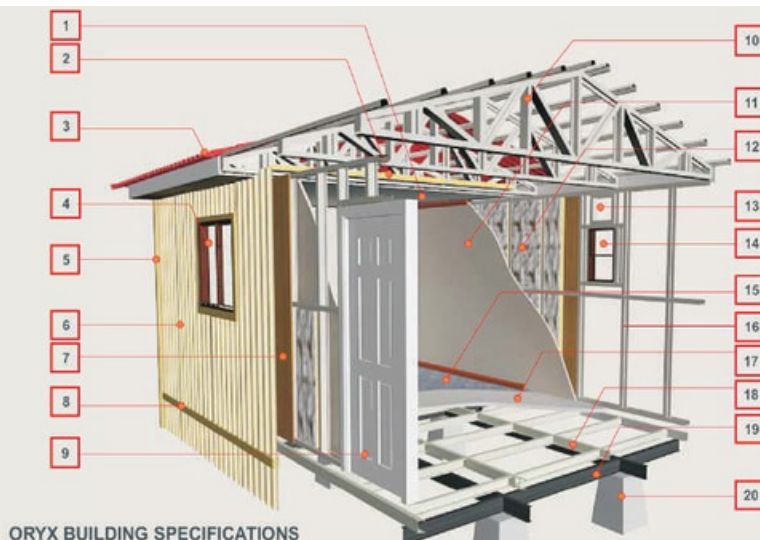
6.1	Roof Structure	<ul style="list-style-type: none"> <li>- <b>Trusses:</b> high tensile Galvanized Steel C- profile members, cold rolled Galvanized steel C-profile. Width and thickness depending on truss structural calculations. Truss spacing not more than 1220mm center-to- center and in accordance with the walls' layout.</li> <li>- <b>Purlins:</b> Galvanized steel, keel profile (hat), 0.55-0.75 mm thick, spaced at a maximum of 1000mm center-to-center.</li> </ul>
6.2	Roof Cladding	<ul style="list-style-type: none"> <li>- 29-gauge pre-painted high rib corrugated metal sheet red color screwed to roof structure.</li> <li>- All external trims are blue color.</li> </ul>
6.3	Ceiling Structure	<ul style="list-style-type: none"> <li>- Painted steel tube profile ceiling rafters, 40 x 40 &amp; 40 x 80 mm.</li> </ul>
6.4	Ceiling Insulation	<ul style="list-style-type: none"> <li>- Blanket fiberglass 100 mm thick with aluminum foil.</li> <li>- Vapor barrier, 10 kg/m<sup>3</sup> density.</li> <li>- Thermal resistance 2.27 m<sup>2</sup>k/w.</li> </ul>
6.5	Ceiling Finishing	<ul style="list-style-type: none"> <li>- One layer of fire rated, beveled edge 12.5mm thick gypsum board, texture painted.</li> <li>- Clear ceiling height 2440mm.</li> </ul>
<b>7.0</b>	<b>EXTERNAL DOORS</b>	
7.1	Single Doors	<ul style="list-style-type: none"> <li>- 900 x 2100mm metal doors with aluminum frame and complete ironmongery. Emergency escapes are fit with panic device, view panel and door closer.</li> </ul>
7.2	Double Doors	<ul style="list-style-type: none"> <li>- 1800 x 2100mm metal doors with aluminum frame and complete ironmongery.</li> </ul>
<b>8.0</b>	<b>INTERNAL DOORS</b>	
8.1	Room Doors (Including IT & Electrical rooms)	<ul style="list-style-type: none"> <li>- 900 x 2100mm, solid core, with door leaf 30 minutes' fire rating with smoke seals and complete ironmongery with Aluminum powder coated white color door frames.</li> </ul>
8.2	Private Toilets	<ul style="list-style-type: none"> <li>- 600 x 2100 mm with under door cut and 40mm aluminum threshold and frame.</li> </ul>
8.3	Common Toilets	<ul style="list-style-type: none"> <li>- 900 x 2100mm with door louvers and 12.5mm aluminum threshold and frame.</li> <li>- Cubicle doors are 600 x 2100 x 15mm non-toxic and chemical resistant PVC foam board.</li> </ul>
<b>9.0</b>	<b>WINDOWS</b>	

9.1	External Windows	<p><b>Room Windows:</b></p> <ul style="list-style-type: none"> <li>- Size 1200 x 1000 mm, horizontal sliding, single glazing, with removable fly screen mesh (Kinro, US made or local), depending upon availability.</li> <li>- Aluminum frame mill finish.</li> <li>- Meet the egress requirements.</li> <li>- Externally sealed to prevent water leakage.</li> </ul> <p><b>Bathroom windows:</b></p> <ul style="list-style-type: none"> <li>- Size 400 x 600mm with frosted glass, vertically sliding.</li> <li>- Externally sealed to prevent water leakage.</li> </ul>
<b>10.0</b>	<b>ELECTRICAL</b>	
10.1	Distribution Boards	<ul style="list-style-type: none"> <li>- Each building block has one or more distribution panel boards (Alfanar) with main breakers, branch circuit breakers and 10% spare breakers capacity for future use.</li> <li>- RCBO breakers are used for wet areas.</li> <li>- Conductors are copper, 600 volts insulation, installed in PVC conduits.</li> <li>- All circuits have a ground conductor installed.</li> </ul>
10.2	Interior lights	<ul style="list-style-type: none"> <li>- Energy saving 2x18 watts bulbs globe lights fixtures for accommodation rooms. Commercial brand.</li> <li>- Rapid start fluorescent fittings 2x40 watts, with diffuser (surface mounted) elsewhere.</li> <li>- LED Exit signs at each exit with 1½ hour battery backup.</li> <li>- Self-powered Emergency lights are strategically placed in common areas where directional safety for visibility that most likely will occur in the event of an emergency. Design as per RAPCO drawing. (Wall mounted).</li> <li>- Water proof dome lights fixture in bathrooms. Commercial brand.</li> </ul>
10.3	Exterior Lights	<ul style="list-style-type: none"> <li>- A weather proof light fixture, with 60w bulb, at each entrance and exit doors</li> </ul>
10.4	Building wires	<ul style="list-style-type: none"> <li>- Building wires types THHN / THWN.</li> <li>- 600 Volts plain copper conductor with PVC insulation and Nylon jacket.</li> <li>- Meets UL (VW-1) flame test requirement.</li> <li>- Meets UL standards.</li> <li>- Oil and gasoline resistant.</li> </ul>
10.5	Sockets & Switches	<ul style="list-style-type: none"> <li>- Wall mounted Switches/ sockets are BS type complying with NEC Standards.</li> <li>- Duplex receptacle outlets 220V, BS type. 110V provided upon request.</li> </ul>
10.6	Exhaust fans	<ul style="list-style-type: none"> <li>- Wall mounted exhaust fan TAT brand shall be provided in bathroom &amp; kitchen as per RAPCO design drawing.</li> </ul>
10.7	Water Heaters	<ul style="list-style-type: none"> <li>- Adequate size &amp; quantities water heater shall be provided, location is as per RAPCO design drawing.</li> </ul>

<b>11.0</b>	<b>PLUMBING &amp; SANITARY</b>	
11.1	Plumbing	<ul style="list-style-type: none"> <li>- All cold water supply lines are PVC pipe schedule 80.</li> <li>- All hot water supply lines are CPVC pipe schedule 80.</li> <li>- The piping systems include all fittings, valves, accessories, brackets and supports.</li> <li>- All piping is hidden.</li> <li>- waste and vent piping is made of PVC pipe class 3, above and below flooring installed and tested, complete with all fittings, supports and accessories.</li> <li>- A cleanout is provided at one end of the main sewage line.</li> <li>- A vent cowl 50 mm dia. (2") PVC pipe is installed on the open end of the vent pipe.</li> <li>- Floor drain (FD), plastic, trapped type with a cleanout access in all wet areas floors.</li> </ul>
11.2	Wash Basin	<ul style="list-style-type: none"> <li>- Vitreous china ceramic lavatories, pedestal type for private toilets. (Sana-Saudi Ceramic).</li> <li>- Counter -top type for public toilets. The counter top is an 18mm thick non-staining, waterproof, smooth finish, artificial marble with integral back splash.</li> <li>- Mirrors atop lavatories or along counter-tops.</li> </ul>
11.3	W/C (Western)	<ul style="list-style-type: none"> <li>- Vitreous china ceramic water closets, floor mounted, elongated bowl, with siphon jet action and top supply spud.</li> <li>- Each toilet is provided with one water shutoff spray, one toilet paper holder and one towel holder (for private toilets).</li> </ul>
11.4	W/C (Eastern)	<ul style="list-style-type: none"> <li>- Asian water closet (Alwadi-100, Saudi Ceramic) with flush tank.</li> <li>- Each toilet is provided with one water shutoff spray, one toilet paper holder and one towel holder (for private toilets).</li> </ul>
11.5	Shower Unit	<ul style="list-style-type: none"> <li>- Enclosed within water resistant walls and including one fiber glass shower tray (90 x 90cm), one shower head, one shower mixer, one curtain rod, one shower curtain and one robe hook.</li> </ul>
<b>12.0</b>	<b>SAFETY</b>	
12.1	Fire Extinguishers	<ul style="list-style-type: none"> <li>- 6 kg. ABC powder/ CO<sub>2</sub> at public areas entrances and group of each bedrooms.</li> </ul>
12.2	Smoke Detectors	<ul style="list-style-type: none"> <li>- Smoke detectors alarms, battery operated, in all rooms.</li> </ul>
<b>13.0</b>	<b>STANDARD ITEMS</b>	
13.1	Internal Skirting	<ul style="list-style-type: none"> <li>- PVC Skirting shall be fixed internally (bottom, top &amp; corners), color as per available stock.</li> </ul>
<b>14.0</b>	<b>GENERAL</b>	<ul style="list-style-type: none"> <li>- Due to the regular introduction of new technology and materials, we reserve the right to improve our specifications as and when required to meet our company policies, where specific brands or price rates have not been mentioned RAPCO standards quality materials will be used.</li> </ul>

## ORYX (PREFABRICATED SYSTEM) ADVANCED TECHNOLOGY & TOTAL FIRE RATED

- ✓ Ceiling Fire Rated Gypsum Board Sheet 12.5 mm thk.
- ✓ Ceiling Insulation 100mm thk. Fibreglass.
- ✓ Roof G.a. 29 Pre-Painted Metal Corrugated Sheet (Pre-Painted Metal Tile Imitation Optional).
- ✓ Window-W1 1200 x 1000 mm Aluminium Sliding.
- ✓ External Skirting Gauge 29 Pre-Painted Metal Profile.
- ✓ External Cladding G.a 29 Pre-Painted Low-Rib Embossed Metal Sheet (Cement Strip Lap siding Optional). Under Sheathing 6mm Plywood Sheets.
- ✓ External Skirting Gauge 29 Pre-Painted Metal Profile.
- ✓ External Door 900 x 2100 mm Metal Door w/ Aluminium Frame.
- ✓ Truss Assembly 89 x 41 x 11 mm G.I.
- ✓ Internal wall finish 16 mm thk. Fire Rated Gypsum Board.
- ✓ Wall Insulation 100 mm thk. Fibreglass.
- ✓ Exhaust Fan Hole.
- ✓ Window-W2 400 x 600 mm Aluminium Sliding.
- ✓ Carpet Flooring 5 mm Regular Commercial Carpet.
- ✓ Wall Stud 89 x 41 x 11 G.I.
- ✓ Floor 18 mm thk. Cement Board.
- ✓ Floor Joist 89 x 41 x 11 mm G.I.
- ✓ Chassis 140 x 73 x 3.8 mm IPEAA-Beam.
- ✓ Concrete Foundation or Legs.



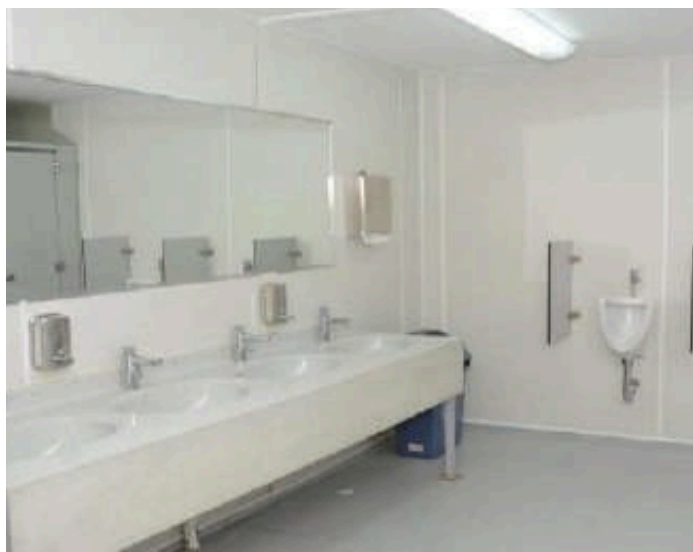
## ANNA STAR PREFABRICATED BUILDINGS



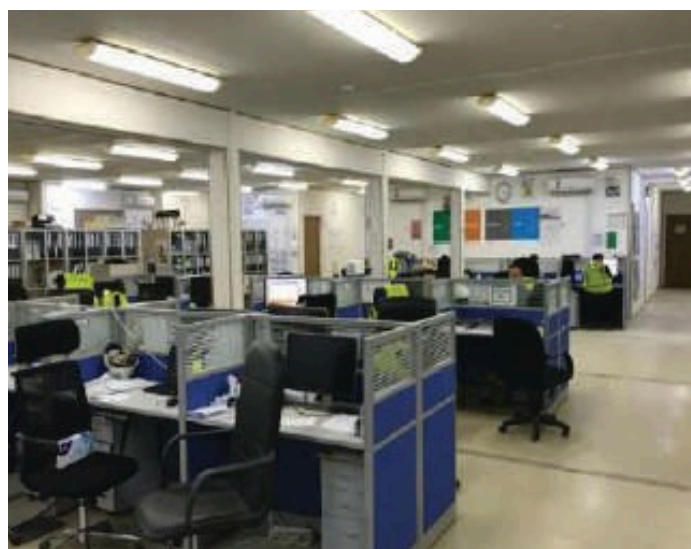
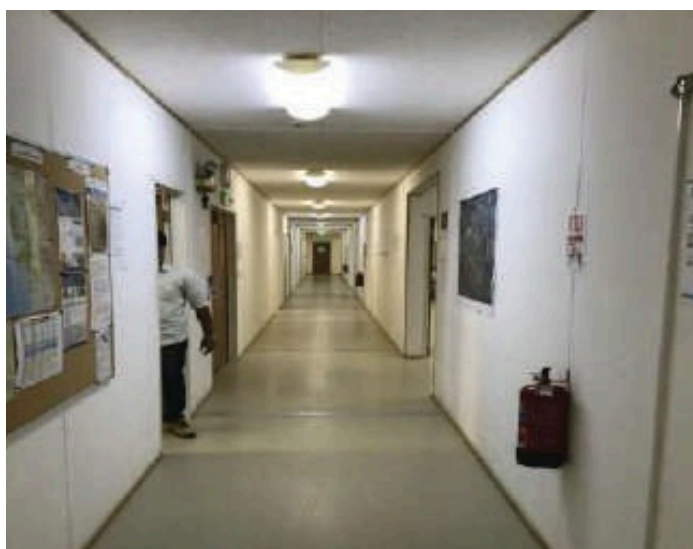
## ANNA STAR PREFABRICATED BUILDINGS



# ANNA STAR PREFABRICATED BUILDINGS

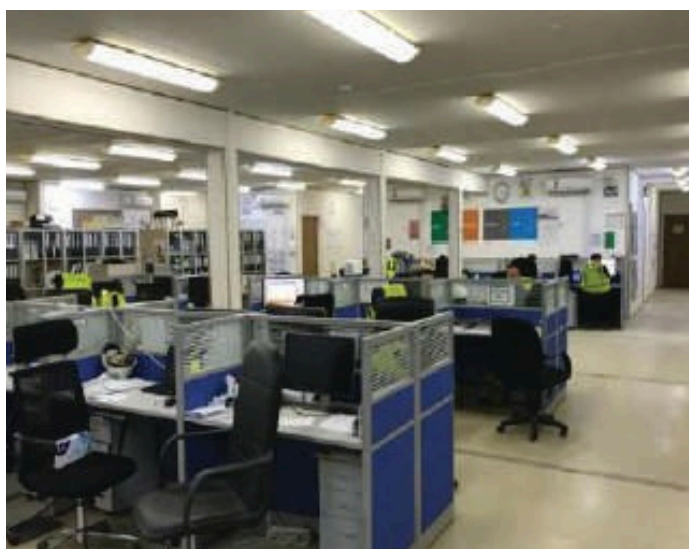
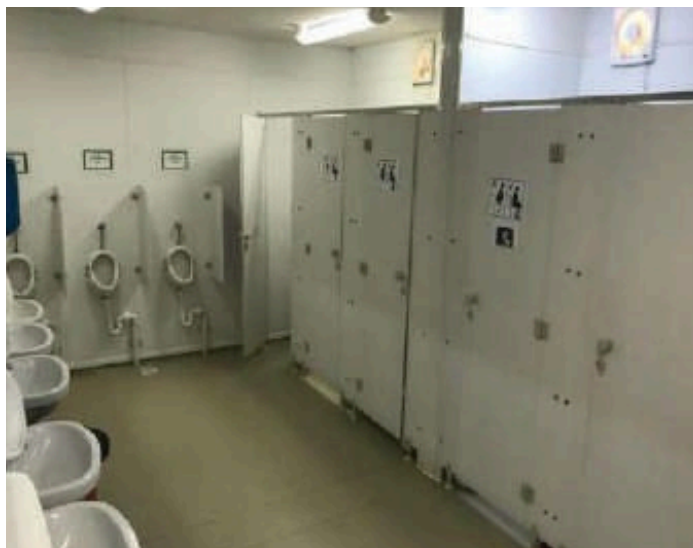
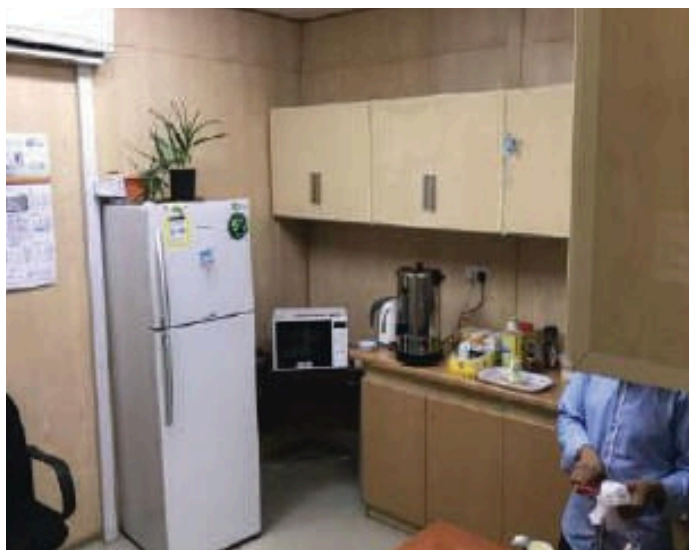
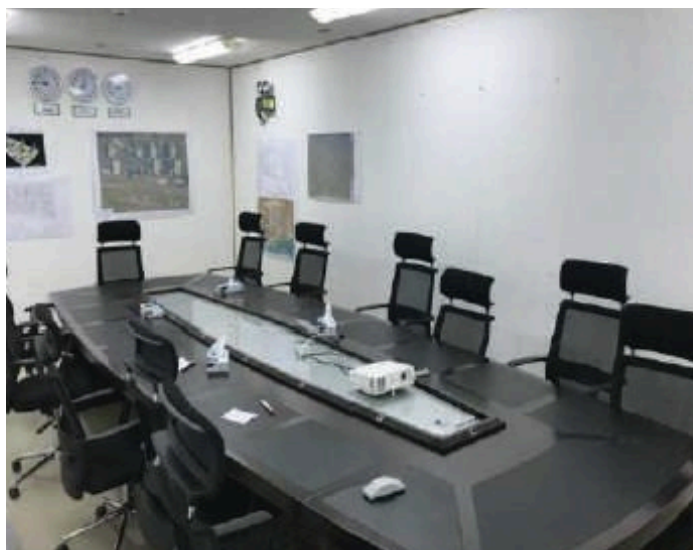


## ANNA STAR PREFABRICATED BUILDINGS

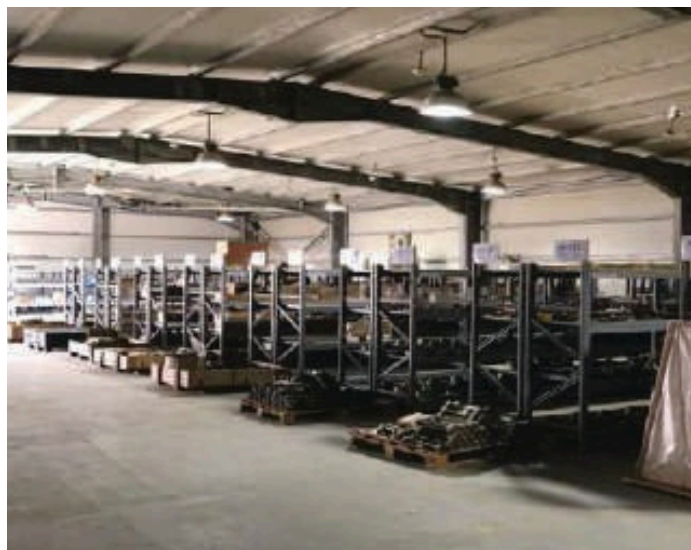




## ANNA STAR PREFABRICATED BUILDINGS



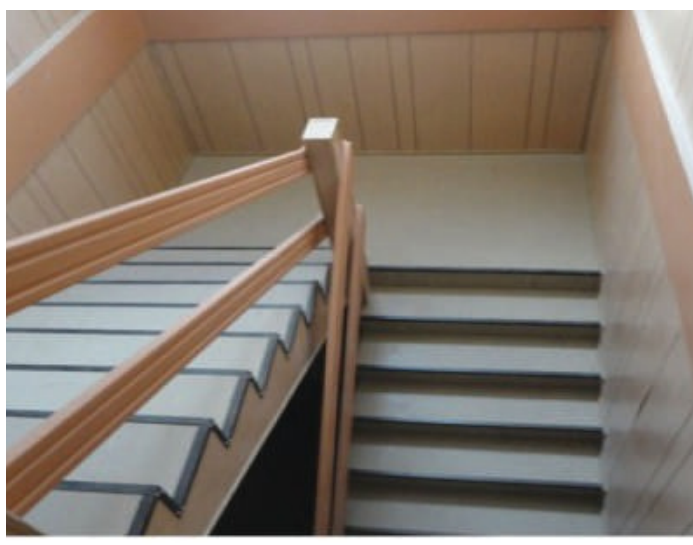
## ANNA STAR PREFABRICATED BUILDINGS



## ANNA STAR PREFABRICATED BUILDINGS



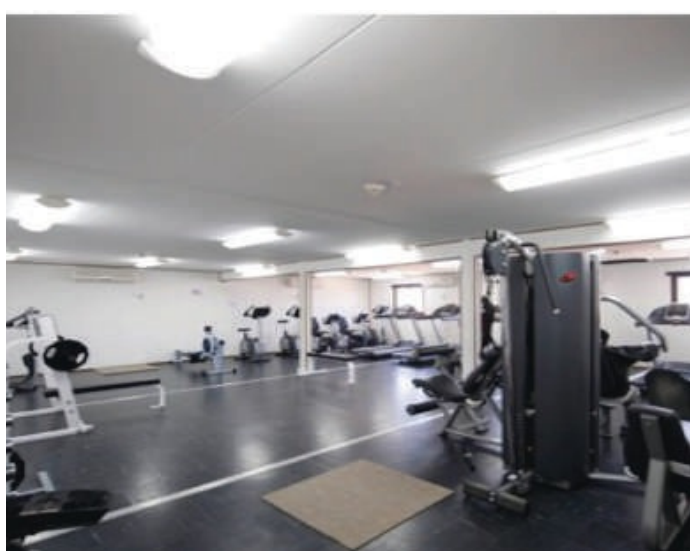
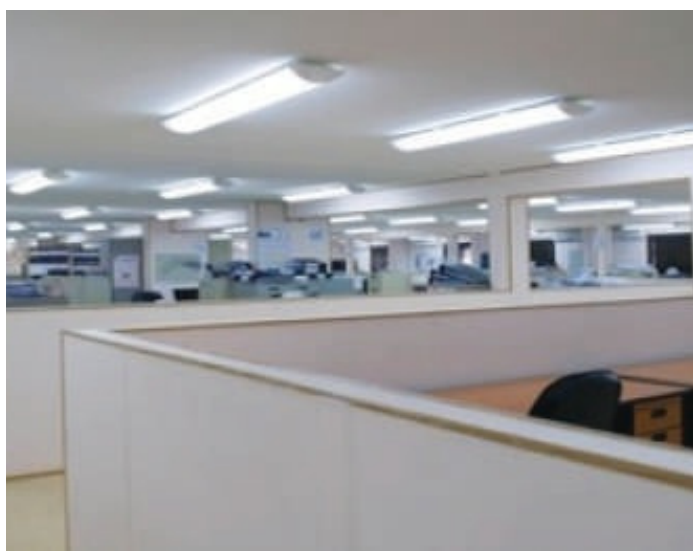
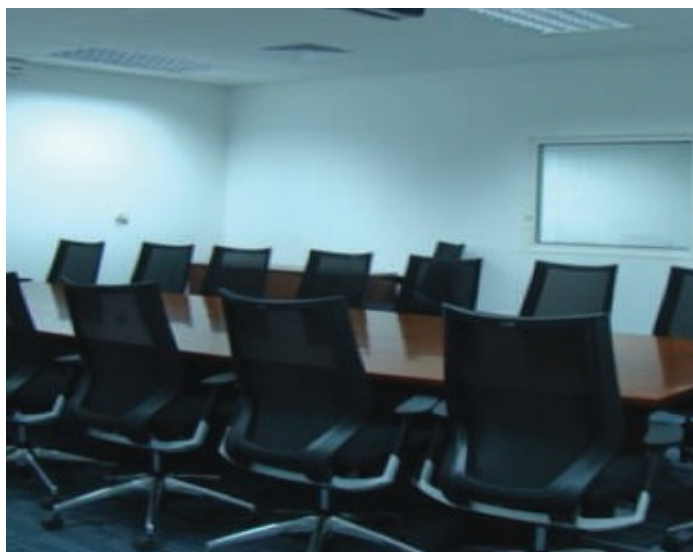
## ANNA STAR PREFABRICATED BUILDINGS



## ANNA STAR PREFABRICATED BUILDINGS



## ANNA STAR PREFABRICATED BUILDINGS



## ANNA STAR CAPABILITIES – INDUSTRIAL SECURITY SYSTEM & SERVICES

We have developed expertise in integrated security system Projects providing end to end solution:

- ❖ Project Management
  - ❖ Design
  - ❖ Supply
  - ❖ Installation
  - ❖ Testing commissioning and training
- We propose a fully integrated security system including all necessary network and interfaces in accordance with the Saudi High Commission for Industrial Security (HCIS) regulations and international standards.
  - Our solutions are a comprehensive turn-key security solution addressing all Customers Project's requirements and needs.
  - Intrusion detection and Assessment System (IDAS): LRDAS Long Range Assessment Detection System, Fiber, Microwave, Infra-red, Radar, Sonar, Motion Detection
  - Video Surveillance System (VSS): Fixed Camera, PTZ Camera, Thermal Camera, NVR, VMS, Video analytics
  - Security Access Control System (SACS): PRS, Card Readers, Biometric Readers, Face Recognition, RFID, Turnstiles, Road Blocker, Push Buttons, and Glass Break
  - Identification Management System (IDMS): Badging system
  - Gate House Security: Road Blocker, Bollards, Drop Gates, Turnstiles, Automatic Sliding Gates, tire killers, slow bumps
  - Scanning Equipment: Under Vehicle Scanning System, X-Ray, Explosive Detectors, Archway metal detector
  - Security Control Room (SCC): Security Console, Video walls, Work stations, Servers
  - Control & Command Center, Fire Alarm System, Fire Fighting System

## 360° SECURITY & SURVEILLANCE SOLUTIONS

Consultancy, Designing, Planning, Supply, Installation, Project Management, Warranty and Maintenance Services

RAPCO' has been grown from providing simple business to meet the challenges of the fast growing in Saudi markets demands in the field Electronics & Security Systems Integrators, by supply and Configurations. We combine the industry's best Security and Low Current Systems with connectivity products. With our high experience and dynamic teams of engineers and Sales expert, we proceed with our philosophy of providing the best technically solutions and satisfactory support with Cost-competitive to meet all customers' requirements.

Our goal is to place at our client's disposal all of our years of experience and technical expertise for the implementation and completion of any project that we undertake. We strive to maintain our reputation as the number ONE provider of Custom Security Systems, from commercial and residential integrated systems to turnkey industrial applications.

When you select a security or communication system from RAPCO, you'll have the best of sales and service professionals behind you. From initial consultation, to planning and installation, to service and training, you can always find the help you need from us. Customer service and support has always been the number ONE priority in our organization. We understand the need for quick response to customer calls, providing 24 hour support and the best solutions available to ensure our customer's peace of mind.

At RAPCO, we excel as a Team committed to exceeding our client's expectations. We draw upon the accumulated experience of decades in completing the most prestigious projects and we are backed by the best brands in the business. Our reliability as a supplier and as a turn-key contractor, providing engineering, installation, commissioning and after-sale support from under one roof, earns us the continued confidence of our clients.

### Security System

- CCTV Systems
- Burglar Alarms
- Anti-Shop Lifting Systems
- Access Controls Systems
- Hotel Card Solutions

### Telecom Solutions

- PABX Communication
- Telecom Towers & Telecom Accessories Fabrication
- Telecom's Microwave Sectors and Antenna Equipment
- Indoor GSM Repeater communication Network
- Wireless Communications





### IT & Network Solutions

- Implement of Data center and computer control Room
- Enterprise Networks design and implementation Network management
- IP Telephony Solution
- Structured Cabling
- LANs / WANs Integration
- Wireless Communications

### Network & Data Centre Solution

We help design and deploy rugged point-to-point, point-to-multipoint, and WI-FI networks. RAPCO's combination of carrier class IP experience, wireless networking skills, and security expertise brings highly reliable and secure wireless communication solutions to their clients.

Indoor Wireless includes the following features:

- Highly secured Standards based and managed wireless LAN links end-user desktops and notebooks to the core IT network.
- Open standards allowing integration with existing and upcoming IT resources and covering large areas securely.
- Provides built-in or multiple management applications and interfaces for administering in small sites.

Outdoor Wireless comes with the following features:

- Point-to-point & point-to-multipoint broadband wireless connectivity
- Data transfer rates of up to 100 Mbps.
- Data Applications
- Video Applications



- **360° SECURITY & SURVEILLANCE SOLUTIONS.**
- **ACCESS CONTROL**
- **DESIGNING, ENGENERRING, CONSTRUCTION, PLANNING, SUPPLY,**
- **CCTV INSTALLATION PROJECTS**
- **IP CAMERA INSTALLATIONS**
- **THERMAL CAMERA INSTALLATIONS**
- **MANAGEMENT, AND MAINTENANCE SERVICES SOLUTIONS,**
- **MAINTENANCE SERVICES**



# ACCESS CONTROL



BIO ACCESS CONTROL



TURNSTILE ACCESS CONTROL

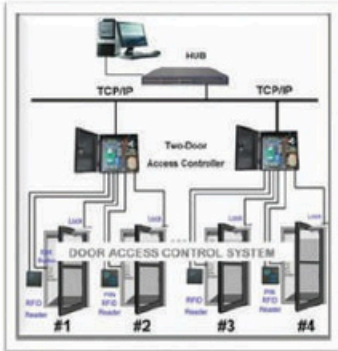


FINGER ACCESS CONTROL

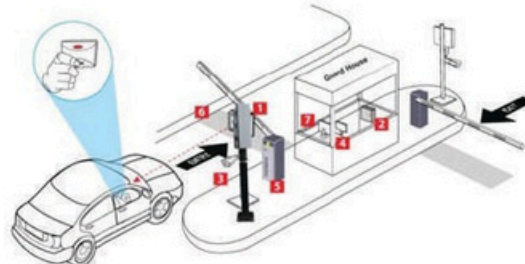


CARD ACCESS CONTROL

## BIOMETRIC DOOR ACCESS CONTROL SYSTEMS



## VEHICLE ACCESS CONTROL SYSTEMS



# CCTV SYSTEM



HD CCTV



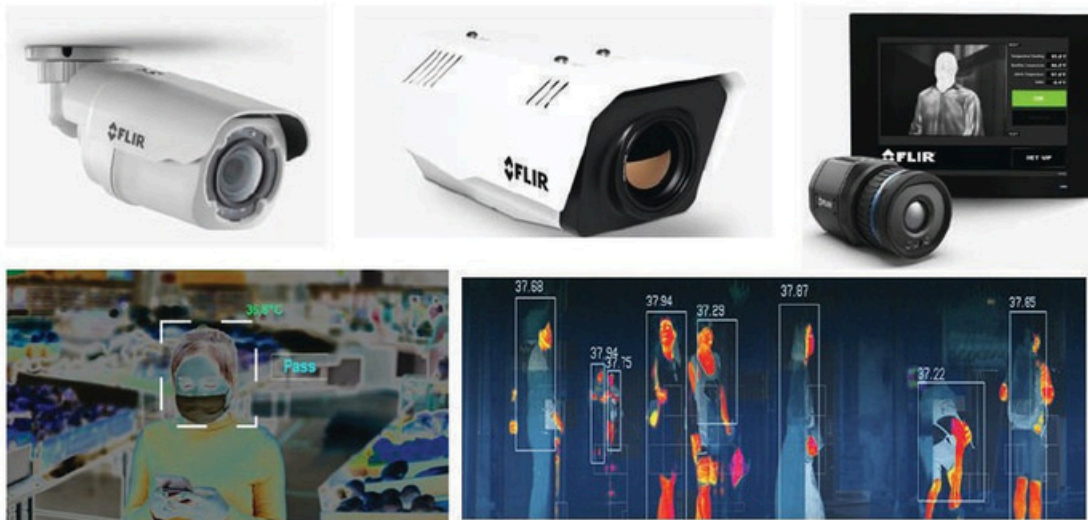
4k-CCTV

## IP CAMERA-SYSTEMS

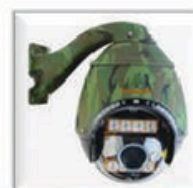
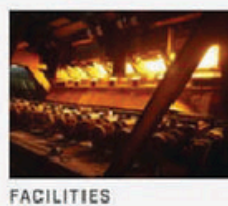
IP CAMERA SURVEILLANCE SYSTEMS FOR BUSINESS, SCHOOLS, HOSPITALS, AND OTHER ORGANIZATIONS



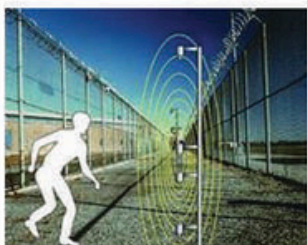
## THERMAL IMAGING CAMERA-SYSTEMS



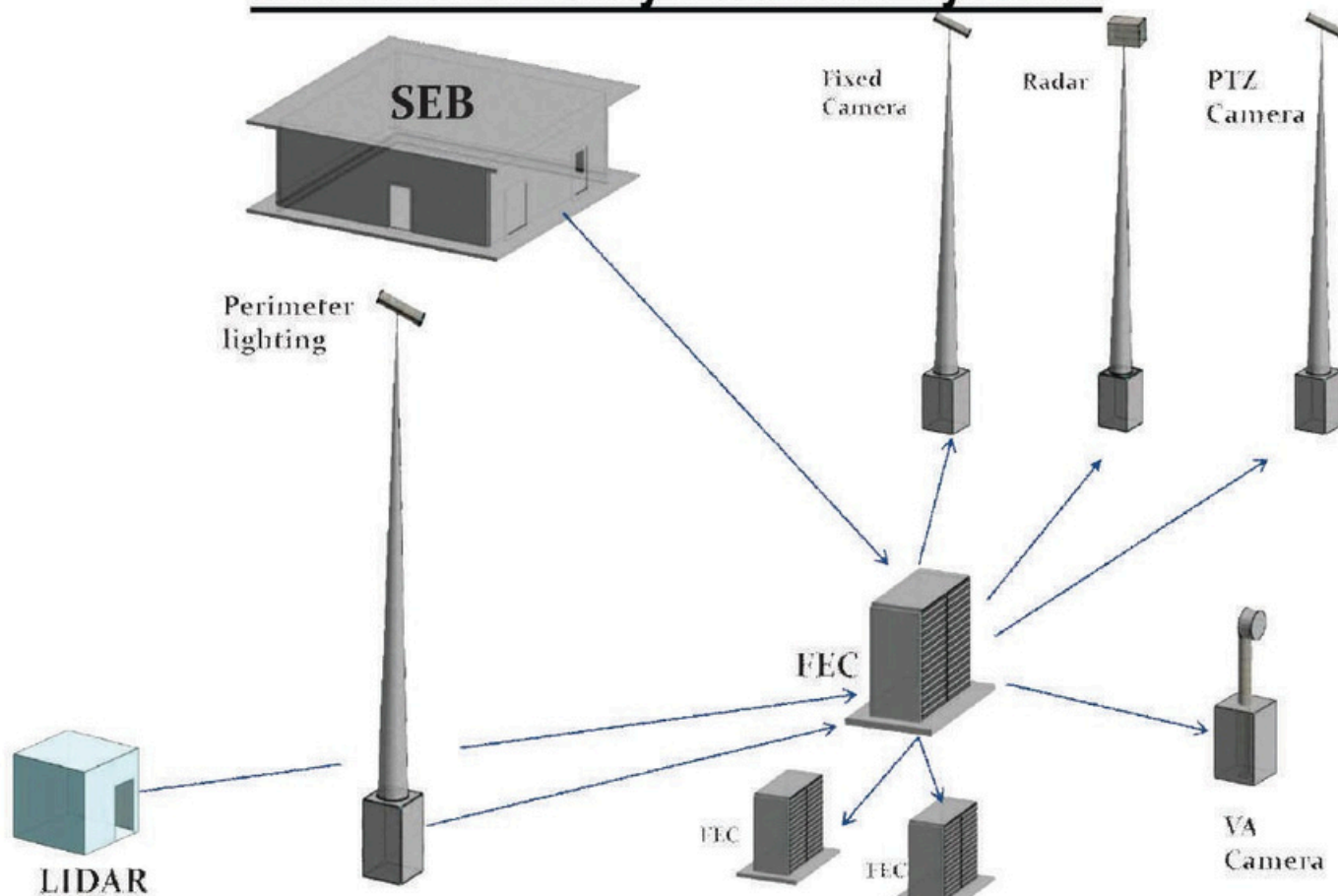
### CRITICAL INFRASTRUCTURE SECURITY



### IDAS (INTRUSION DETECTION AND ASSESSMENT SYSTEM)



## Industrial Security Perimeter Systems



## Radar and Long Range Camera





Readers and Controllers



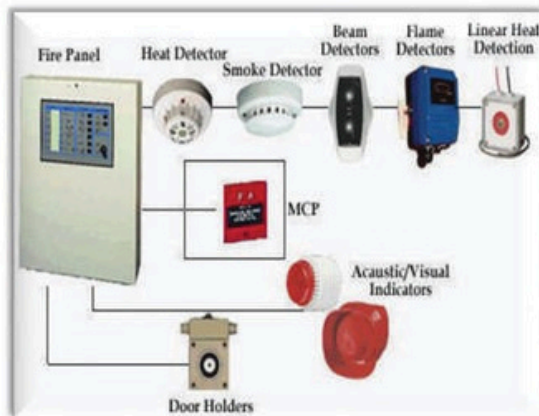
Biometric Time Attendance



Proximity Card



## FIRE ALARM & DETECTION SOLUTIONS



**NITTAN**  
WWW.NITTAN.CO.UK

**KASO**  
SECURITY - 24 HOURS A DAY

**3DX-RAY**  
X-Ray for Security

**SIEMENS**

**Honeywell**

**saia-burgess**

**NAVORI**  
DIGITAL SIGNAGE SOFTWARE

**Streetlight.vision**

**FLIR**  
SYSTEMS

**Schneider**  
Electric

**ReLab**  
SOFTWARE

**HIKVISION**

**SAMSUNG**

**AXIS**  
COMMUNICATIONS

**uniview**  
HD VIDEO SOLUTIONS

**VIVOTEK**

## ANNA STAR GAS STATION CONSTRUCTION & PETROLEUM SERVICES

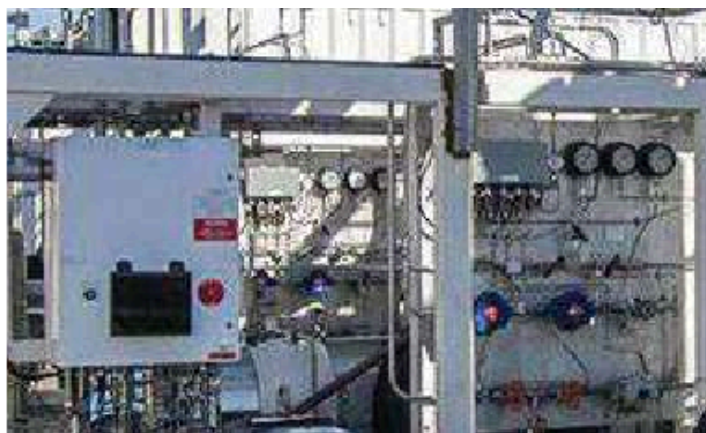
ANNA STAR is the best EPC General Contractor in KSA. The important criteria include history of work, customer satisfaction, awards and recognition, background of the principals, quality of work, safety, clientele, and online presence.

Our Mission is to utilize our wide experience to build, supply Petrol & Diesel to each entities of every corner of KSA. We offer our clients high quality services and value added services in the fields of petroleum engineering. Our core strength is derived from the expertise of the work-force and the use of technology at its best.



## AN INTEGRATED ENGINEERING, PROCUREMENT, CONSTRUCTION MAINTENANCE SERVICES PROVIDER FOR ELECTRICAL & INSTRUMENTATION (E&I):

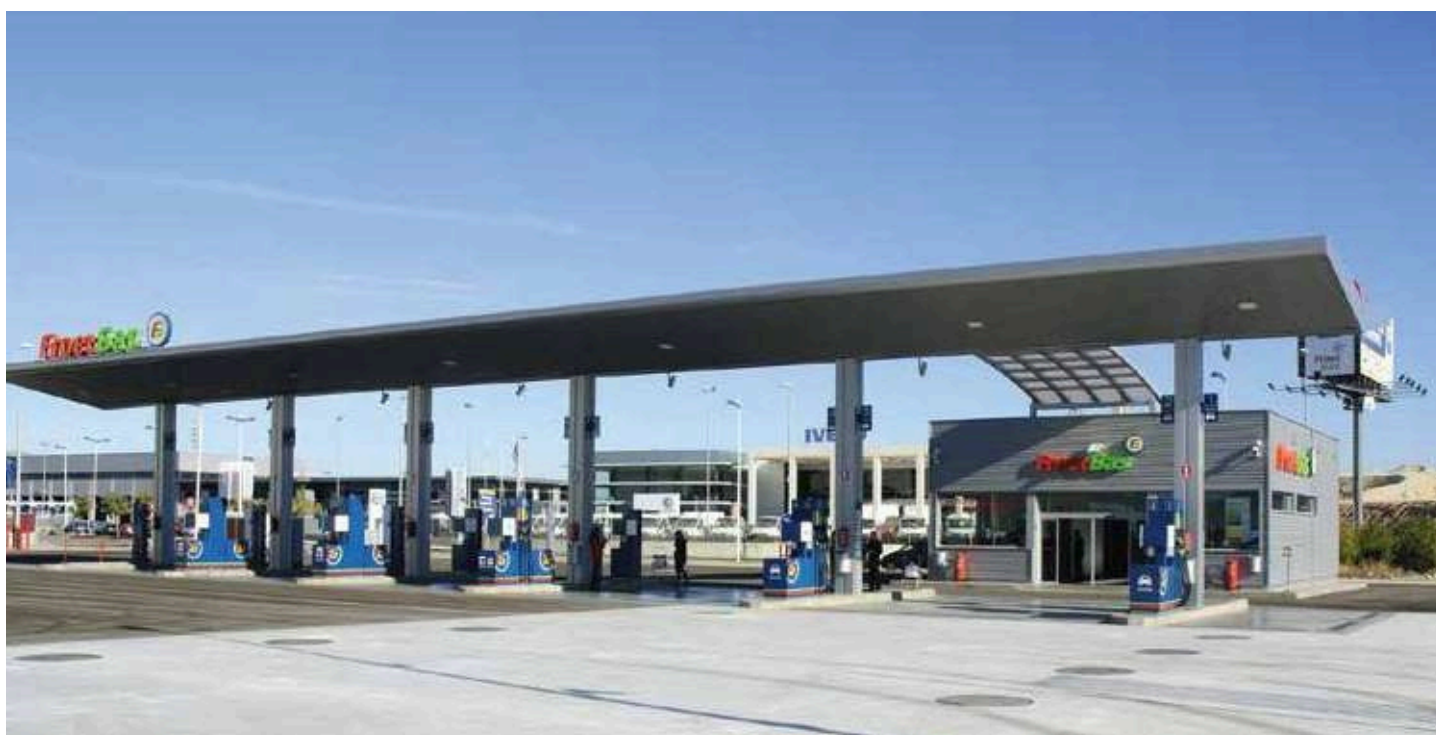
- ✓ ANNA STAR has the experience and resources required to meet today's sophisticated installation.
  - ✓ needs. Our commitment to keeping up-to-date on the most recent technological advances helps.
  - ✓ us provide rapid and efficient solutions to all types of lighting, power, instrumentation, high
  - ✓ voltage.
  - ✓ Our comprehensive range of services and solutions include.
  - ✓ Construction, Maintenance, & Retrofits - System Installations - Inspections and Testing.
- Calibrations - Trouble Shooting - Commissioning & Start-Up





## ANNA STAR GAS STATION CONSTRUCTION & PETROLEUM SERVICES

- ✓ ANNA STAR owned O&M contractor in the region. It brings its technical expertise, process, systems, and managerial staff to compliment, well-established supply chain in Saudi Arabia as well as its in-country experience in recruiting, training and retaining staff to maximize the Saudi talents in this segment of commercial endeavor without compromising on quality of service.
- ✓ ANNA STAR is highly capable of providing safe and reliable execution of all aspects of the operation and maintenance of large scale Civil, Electromechanical, Plant, Power Generation and Water facilities including.
- ✓ Engineering review and construction supervision services.
- ✓ Initial mobilization and project commissioning.
- ✓ Long term operations and maintenance.
- ✓ Staffing services.
- ✓ Technical support services including development of plant specific Standard Operating and Maintenance procedures.
- ✓ Major overhaul of boilers, turbines, multistage flashing and reverse osmosis equipment.
- ✓ ANNA STAR can provide instant basis the management, technical knowledge, operations and maintenance personnel and plant equipment and tools required to operate and maintain any type of facility in Kingdom with full confidence.
- ✓ At ANNA STAR, we rigorously apply the policy of safety FIRST and continually train all staff on safety. We ensure that annual safety inspections and certification and all associated safety systems and equipment are made.



## ELECTRICAL CAPABILITIES

ANNA STAR provides full spectrum of electrical services required by multinational companies in the Petroleum, Petrochemical and Oil and Gas (Onshore and Offshore) industries.

Our large and global pool of skilled craftsmen and specialists combine their skills to deliver the complete suite of electrical construction and installation works.



## ELECTRICAL SERVICES

- ✓ Earthing and Lightning Protection System.
- ✓ Lighting System & Heat Tracing System.
- ✓ Electrical Sub-station (up to 66KV) and Motor Control Center
- ✓ HV & LV Cable Installation and Termination
- ✓ Power Transformer Installation (up to 66KV).
- ✓ Uninterruptible Power Supply and Emergency Standby Support System.
- ✓ MV Motor Installation (11KV, 2750KW).
- ✓ RMU, Transformer, Generator, Switch Gear and Switchboard.
- ✓ Standby Diesel Generator & MV/LV Motor.
- ✓ Upgrade Lighting, Floodlight & Street Light to Energy Saver/LED.
- ✓ Cathodic Protection System Installation.

This includes regular scheduled maintenance or predictive and preventive maintenance to extend the life of your plant; turnaround and shutdown maintenance as required; and even daily and facilities maintenance.

## INSTRUMENTATION CAPABILITIES

Our team of engineers specialize in delivering exceptional quality instrumentation works to a diverse clientele of multinational companies in the Petroleum, Petrochemical and Oil & Gas (Onshore & Offshore) industries.

We have earned the distinctive reputation of being a reliable and trustworthy partner in the industry with an excellent track record.

## INSTRUMENTATION SERVICES

- ✓ Installation of Remote Instrument Enclosures.
- ✓ Metering Skids & Gas Detection Systems Installation.
- ✓ Installation of SCADA/PLC/DCS Systems.
- ✓ Telecommunication and Access Control Systems.
- ✓ Integration of Analyzers in Shelters.
- ✓ Process Control Field Instruments.
- ✓ Fire Alarm and Fire Control Installation.
- ✓ CCTV, PAGA and Intrusion Detection Systems.



## TESTING & COMMISSIONING

- ✓ Transformer Testing
- ✓ Electrical Testing & Inspection
- ✓ Switchgear (HV & LV) and MCC Testing
- ✓ UPS System, Battery/ Charger Testing
- ✓ Field Instrument Testing & Inspection
- ✓ Process Loop Testing
- ✓ Testing & Commissioning of DCS, SCADA
- ✓ System Tank Gauging System



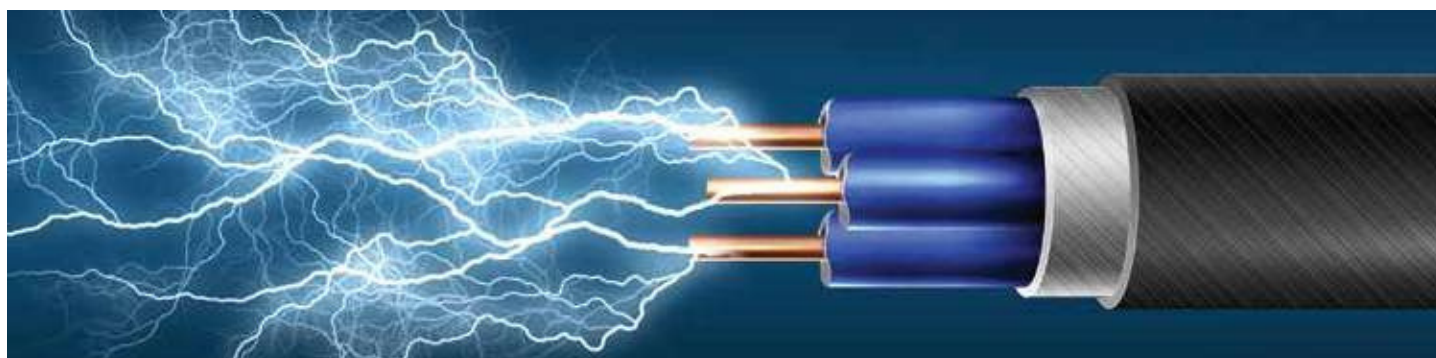
## O&M - OUR CAPABILITIES AND EXPERTISE

- ✓ ANNA STAR owned O&M contractor in the region. It brings its technical expertise, process, systems, and managerial staff to compliment, well-established supply chain in Saudi Arabia as well as its in-country experience in recruiting, training and retaining staff to maximize the Saudi talents in this segment of commercial endeavor without compromising on quality of service.
- ✓ ANNA STAR is highly capable of providing safe and reliable execution of all aspects of the operation and maintenance of large scale Civil, Electromechanical, Plant, Power Generation and Water facilities including.
  - ✓ Engineering review and construction supervision services.
  - ✓ Initial mobilization and project commissioning.
  - ✓ Long term operations and maintenance.
  - ✓ Staffing services.
  - ✓ Technical support services including development of plant specific Standard Operating and Maintenance procedures.
  - ✓ Major overhaul of boilers, turbines, multistage flashing and reverse osmosis equipment.
  - ✓ ANNA STAR can provide instant basis the management, technical knowledge, operations and maintenance personnel and plant equipment and tools required to operate and maintain any type of facility in Kingdom with full confidence.
- ✓ At ANNA STAR, we rigorously apply the policy of safety FIRST and continually train all staff on safety. We ensure that annual safety inspections and certification and all associated safety systems and equipment are made.

## ELECTRICAL CABLE

ANNA STAR provides full spectrum of electrical services required by multinational companies in the Petroleum, Petrochemical and Oil and Gas (Onshore and Offshore) industries.

Our large and global pool of skilled craftsmen and specialists combine their skills to deliver the complete suite of electrical construction and installation works.



## ELECTRICAL SERVICES

- ✓ Lighting System & Heat Tracing System
- ✓ Electrical Sub-station (up to 66KV) and Motor Control Center
- ✓ HV & LV Cable Installation and Termination
- ✓ Power Transformer Installation (up to 66KV)
- ✓ Uninterruptible Power Supply and Emergency Standby Support System
- ✓ MV Motor Installation (11KV, 2750KW)
- ✓ RMU, Transformer, Generator, Switch Gear and Switchboard
- ✓ Standby Diesel Generator & MV/LV Motor
- ✓ Upgrade Lighting, Floodlight & Street Light to Energy Saver/LED
- ✓ Cathodic Protection System Installation

This includes regular scheduled maintenance or predictive and preventive maintenance to extend the life of your plant, turnaround and shutdown maintenance as required; and even daily and facilities maintenance.

## INSTRUMENTATION CAPABILITIES

Our team of engineers specialize in delivering exceptional quality instrumentation works to a diverse clientele of multinational companies in the Petroleum, Petrochemical and Oil & Gas (Onshore & Offshore) industries. We have earned the distinctive reputation of being a reliable and trustworthy partner in the industry with an excellent track record.

## INSTRUMENTATION CAPABILITIES

- ✓ Installation of Remote Instrument Enclosures
- ✓ Integration of Analyzers in Shelters
- ✓ Installation of SCADA/PLC/DCS Systems
- ✓ Process Control Field Instruments
- ✓ Metering Skids & Gas Detection Systems Installation
- ✓ Fire Alarm and Fire Control Installation
- ✓ Telecommunication and Access Control Systems
- ✓ CCTV, PAGA and Intrusion Detection Systems

## TESTING & COMMISSIONING

- ✓ Transformer Testing
- ✓ Electrical Testing & Inspection
- ✓ Switchgear (HV & LV) and MCC Testing
- ✓ UPS System, Battery/ Charger Testing
- ✓ Field Instrument Testing & Inspection
- ✓ Process Loop Testing
- ✓ Testing & Commissioning of DCS, SCADA System
- ✓ Tank Gauging System



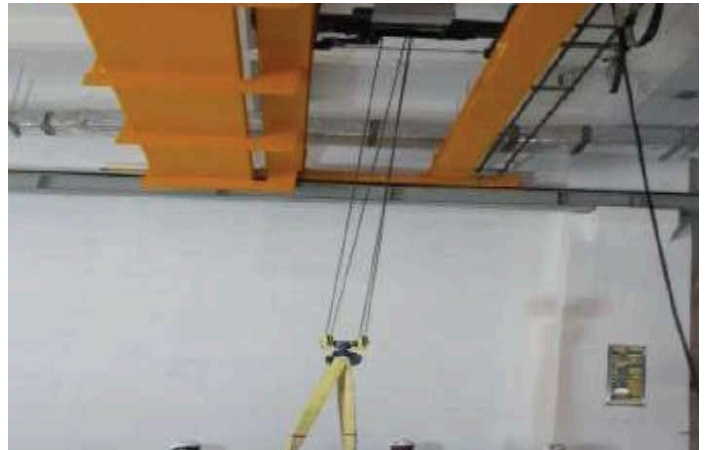
## OUR PROJECT (Saudi Aramco GIS Project, Yanbu)



## OUR PROJECT (Pre-commissioning of HVAC System)



Testing and Air Balancing



Load testing of Overhead Crane



Pre-commissioning of Power Panel



Pre-commissioning of FACP



## OUR PROJECT (Saudi Aramco GIS Project)

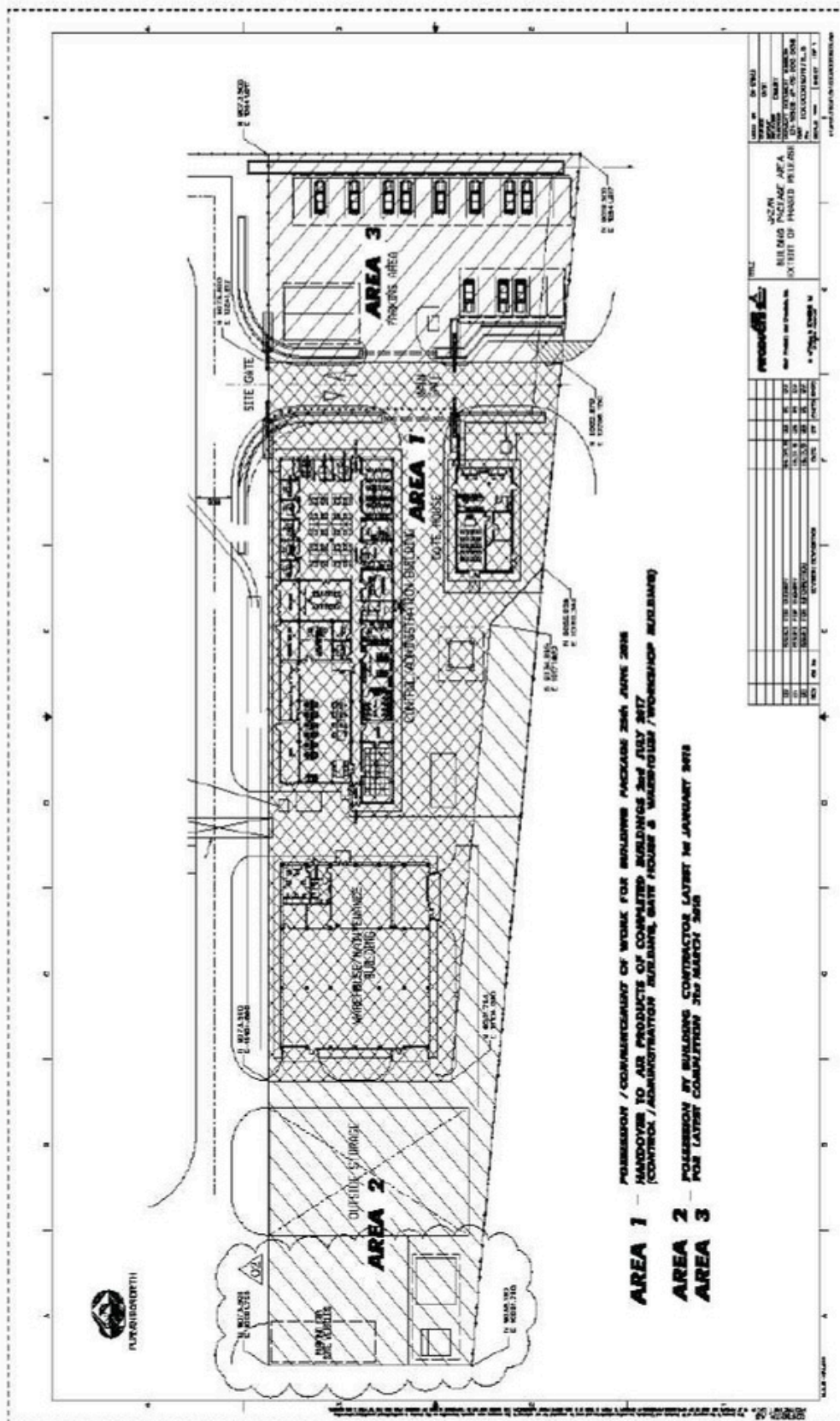


**OUR PROJECT** (Saudi Aramco GIS Project) —



THE FOLLOWING BUILDINGS

(Amenities and Control Building), (Main Security/Guard Building), (Workshop and Store Building)



**OUR PROJECT**

**Control & Admin. Building, Jazan IGCC**



**Warehouse & Workshop Building, Jazan IGCC**

## OUR PROJECT



Security & Guard House Building



Control Building Site Preparation, Jazan IGCC

## OUR PROJECT



Control Building Site Preparation, Jazan IGCC



Control Building Road Paving, Jazan IGCC

**OUR PROJECT** (Sadara Project Jubail Saudi Arabia)



Data Centre Building, Sadara Jubail



Data Centre Building, Sadara Jubail

**OUR PROJECT** (Sadara Project Jubail Saudi Arabia) —



Data Centre Building, Sadara Jubail



Data Centre Building, Sadara Jubail



**OUR PROJECT** (Sadara Project Jubail Saudi Arabia) —



Data Centre Building, Sadara Jubail



Data Centre Building, Sadara Jubail

**OUR PROJECT** (Sadara Project Jubail Saudi Arabia) —



Data Centre Building, Sadara Jubail



Data Centre Building, Sadara Jubail

**OUR PROJECT** (Sadara Project Jubail Saudi Arabia) —



Data Centre Building, Sadara Jubail



Data Centre Building, Sadara Jubail

## OUR PROJECT



## ANNA STAR GROUP EMPLOYEE SUMMARY

CATEGORY		NO OF EMPLOYEES
Project Management		1
GRO / PRO		9
Project Manager		1
Administrators		4
QA/QC, Safety		1
		1
		9
		2
		9

ENGINEERS		57
Civil Engineers		1
Architectural Engineers		4
Mechanical Engineers		1
Electrical Engineers		0
Instrumentation Engineers		1
		2
		1
		3
		8



FIELD SUPERVISORS		141
Civil, Land Surveyors		1
Building		5
Steel Structure, Scaffolding Inspectors		1
Piping		8
Piping		1
Tank		6
Erection & Installation		1
Painting & Insulation		8
Electrical		1

2

2

0

## ANNA STAR GROUP EMPLOYEE SUMMARY

CIVIL & BUILDING		929
Foreman		20
Rigger		97
Insulation Worker		8
Administrators		14
QA/QC, Safety		20
Tinsmith		22
Painter		16
Rebar Worker		25
Rebar Worker		18
Bricklayer, Masons		11
Plasterer		21
Concrete Worker		24
Scaffolder		22
Tile Masons		88
Carpenter		73
Heavy Equipment Operators		64
Light & Heavy Drivers		24
Unskilled Labors		39
		8
Helpers		

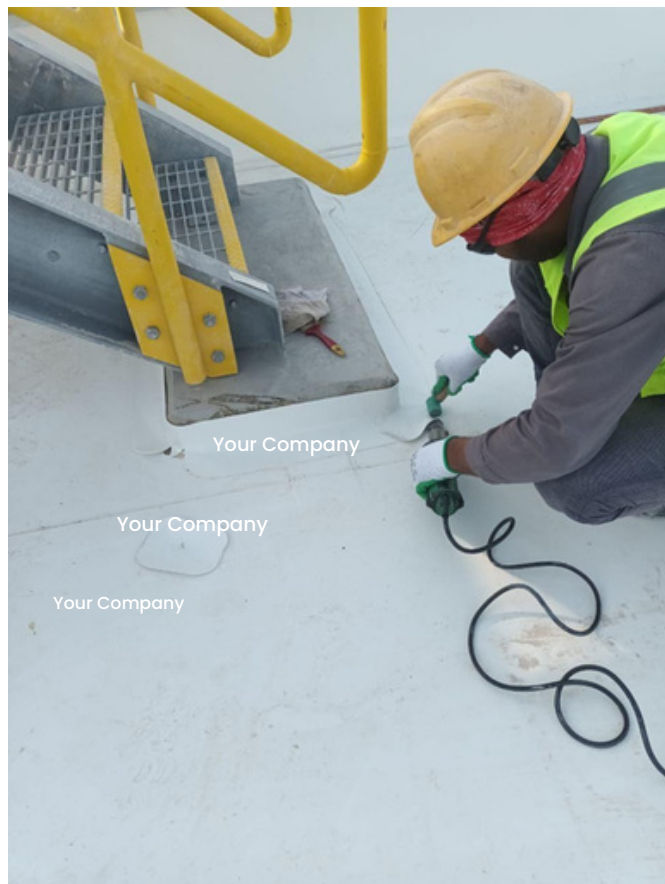
OTHER CRAFTSMEN		
Pipe Welder		22
Plate Welder		15
Pipe Fitter		25
Iron Worker		11
Mechanic		10
Electrician		19
Instrument Worker		9
Calibrator		12
Skilled Labors		5
		25

## MAJOR CONSTRUCTION EQUIPMENT

Equipment	Capacity	Quantity	Details
Mobile Crane	300 Tons to 1000 Tons	3	Kobelco & Liebherrhau
Mobile Crane	100 Tons to 300 Tons	21	Tadano, Grohe, Kobelco
Mobile Crane	Upto 100 Tons	46	Tadano, XMG
Heavy Equipment Lifter	650 Tons & Over	3	Grove
Heavy Equipment Lifter	1,000 Tons	1	Grove
Tractor/Trailer	50 Tons & Over	13	Benz
Tractor/Trailer	20 Tons & Over	14	Volvo
Bulldozer	D8 & D9	9	Komatsu
Bulldozer	D6 & D7	5	Komatsu
Motor Grader	14G	12	Volvo, CAT
Excavator	PC 320 & PC 220	14	Kobelco
Rock Breaker	K 200	3	
Backhoe - JCB	CAT 428 C & CAT PC 220	18	Caterpillar
Wheel Loader	CAT 966D, 966F	13	Hitachi, CAT, Komatsu, JCB

Equipment	Capacity	Quantity	Details
Bobcat / Skid Loader		7	
Roller Compactor	5 Ton - 15 Ton	28	JCB
Dump Truck	16M <sup>3</sup>	22	Benz
Dump Truck Trailer	25M <sup>3</sup> & 32M <sup>3</sup>	13	Benz
Water Tanker	12,000 - 32,000 ltr	14	
Diesel Tanker	5,000 - 10,000 ltr	7	
Vacuum Tanker		19	
Fire Truck		2	
Truck	20 Ton & over	15	Benz, Volvo, Mitsubishi, Isuzu
Truck	10 Ton & Over	20	Benz, Volvo, Mitsubishi, Isuzu
Plate Compactor		10	
Concrete Ready Mix Truck		4	
Scraper	12M <sup>3</sup>	2	
Forklift	3 Ton - 10 Ton	25	CAT, YALE, Mitsubishi

# MAJOR CONSTRUCTION PROJECT



Anna Star Contracting Project

## Fully bonded Exposed WP system





## MAJOR CONSTRUCTION PROJECT



### MARJAN Increment Program Pkg 9-11 & Pkg10 Light Weight Foam Concrete Application

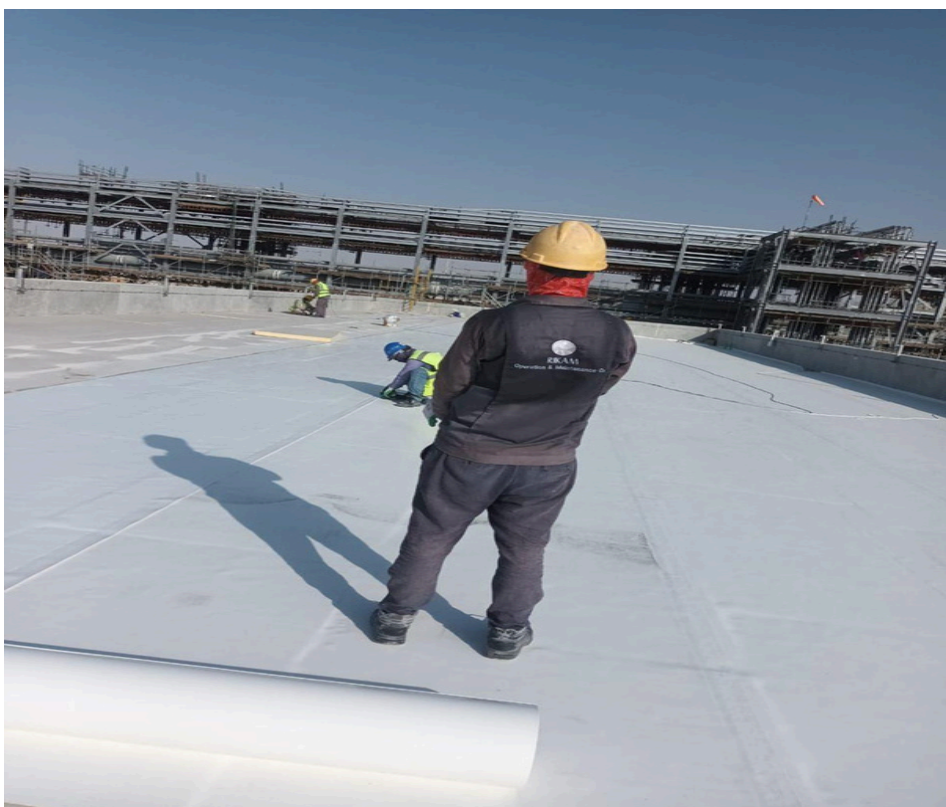




## MARJAN Increment Program Pkg 9-11 & Pkg10 PIR Fully Bonding



## MAJOR CONSTRUCTION PROJECT

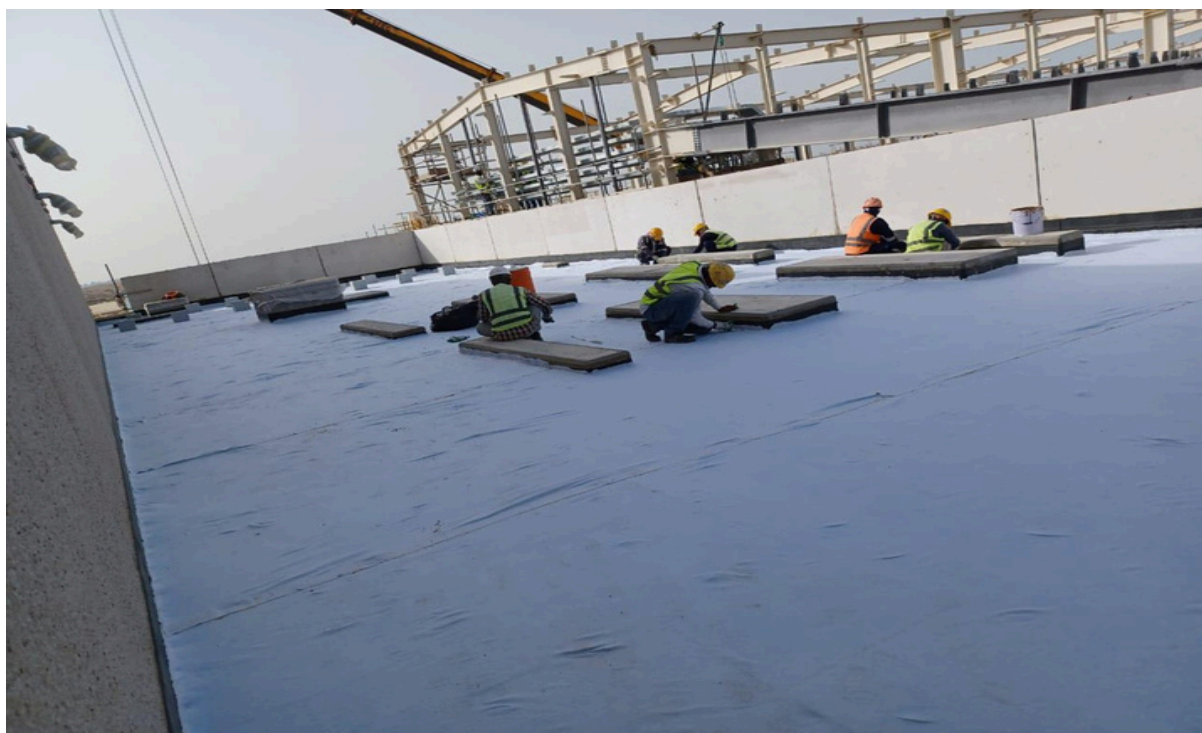


Anna Star Contracting Project fully bonded Exposed WP system

## MAJOR CONSTRUCTION PROJECT



# CRCC Bridge Deck Project





## Matrafiyah School Project



**Anna Star Contracting Project Water Test Procedure**

## MARJAN Increment Program/Water Test Procedure



## MARJAN Increment Program/Water Test Procedure



WATERPROOFING WORKS @ TANAJIB





Application of PVC Waterproofing membrane

## MAJOR CONSTRUCTION PROJECT



## MAJOR CONSTRUCTION PROJECT



## MAJOR CONSTRUCTION PROJECT



## MAJOR CONSTRUCTION PROJECT



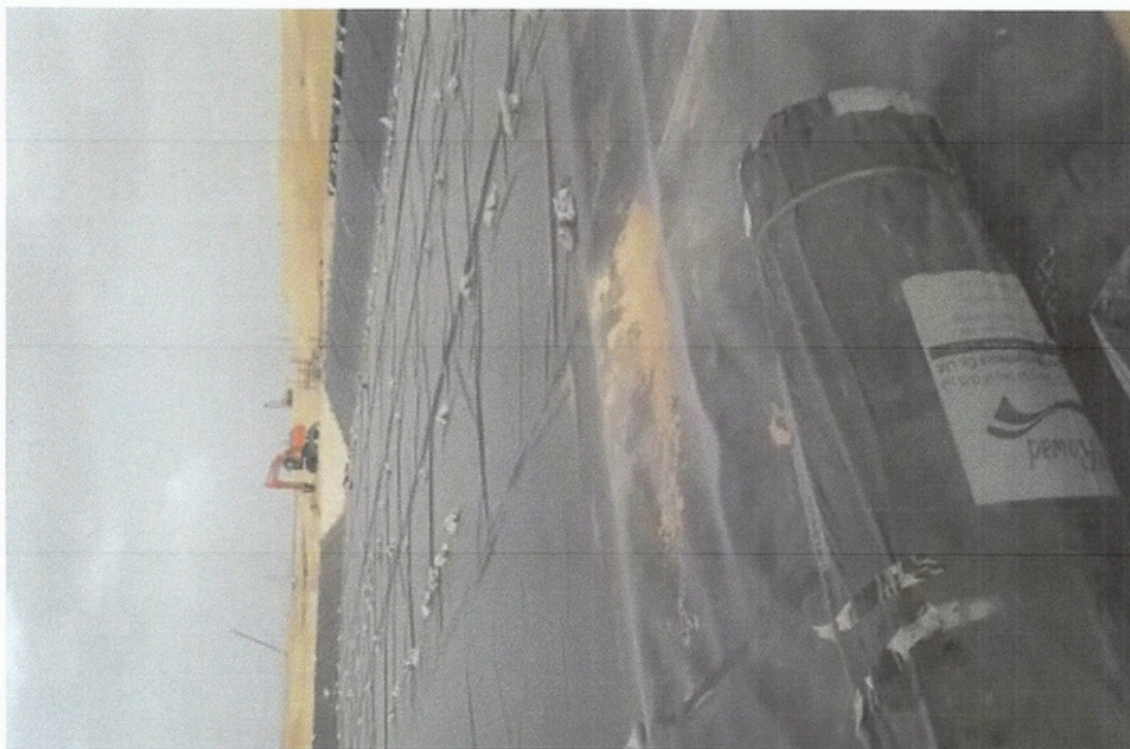
MAJOR CONSTRUCTION PROJECT



MAJOR CONSTRUCTION PROJECT

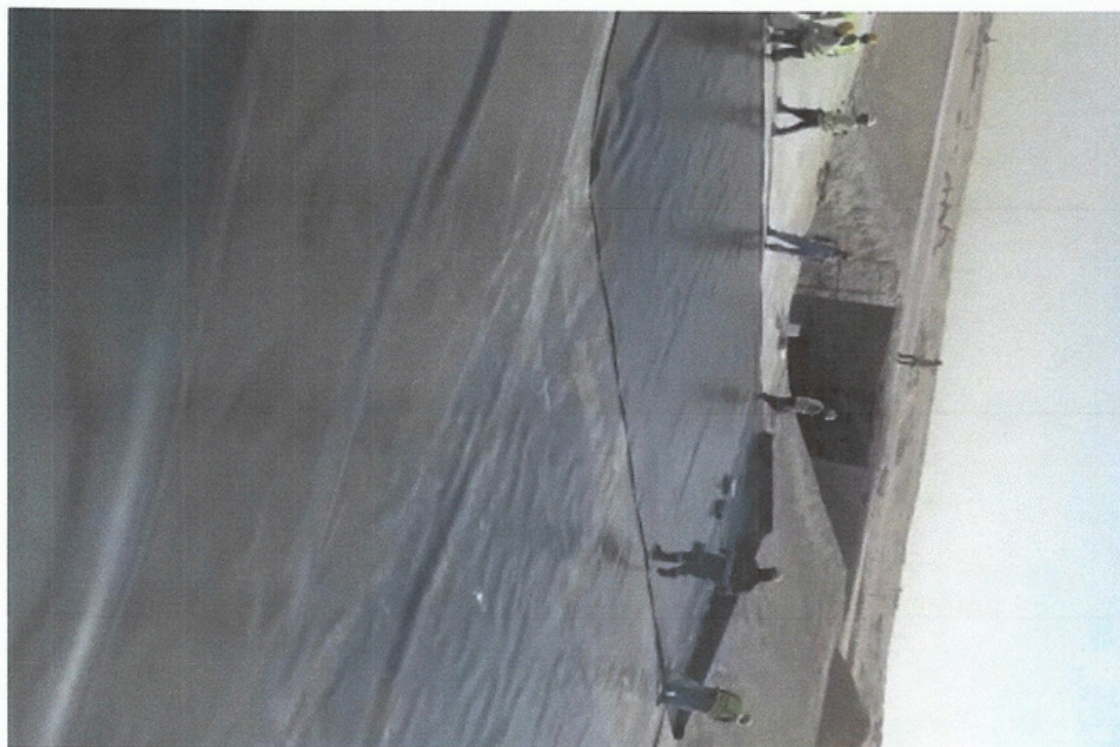


MAJOR CONSTRUCTION PROJECT

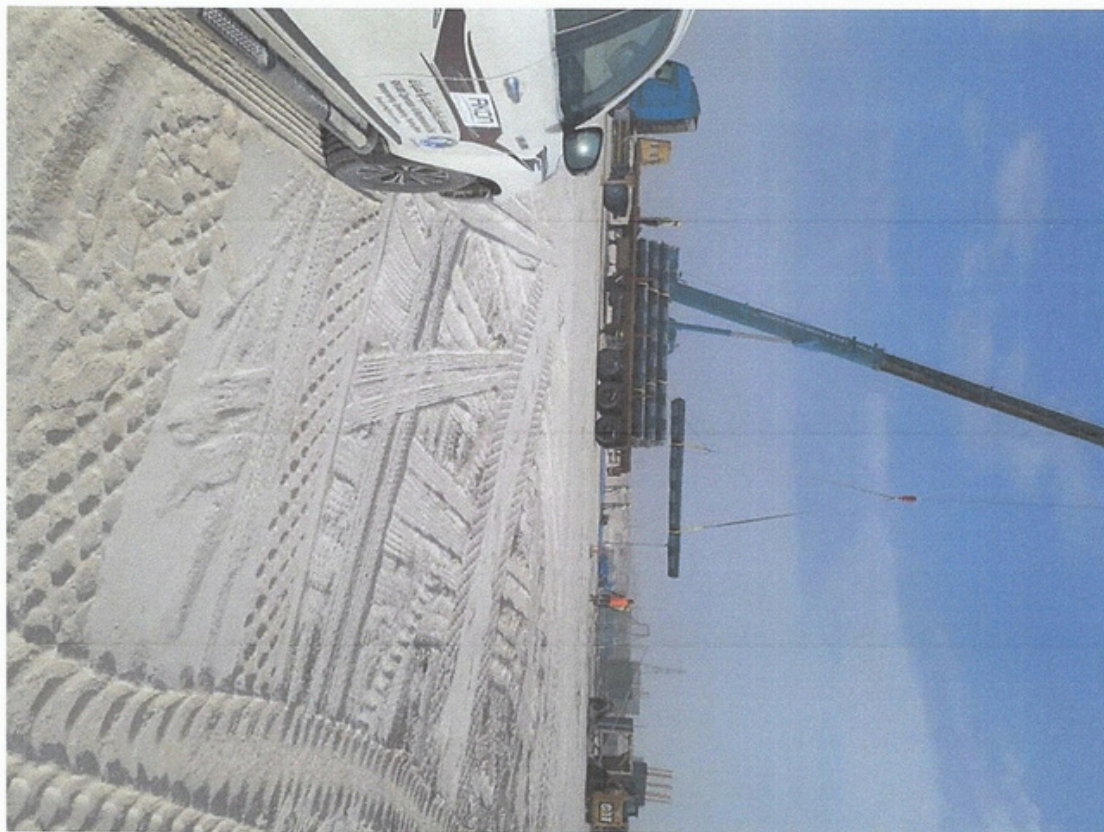




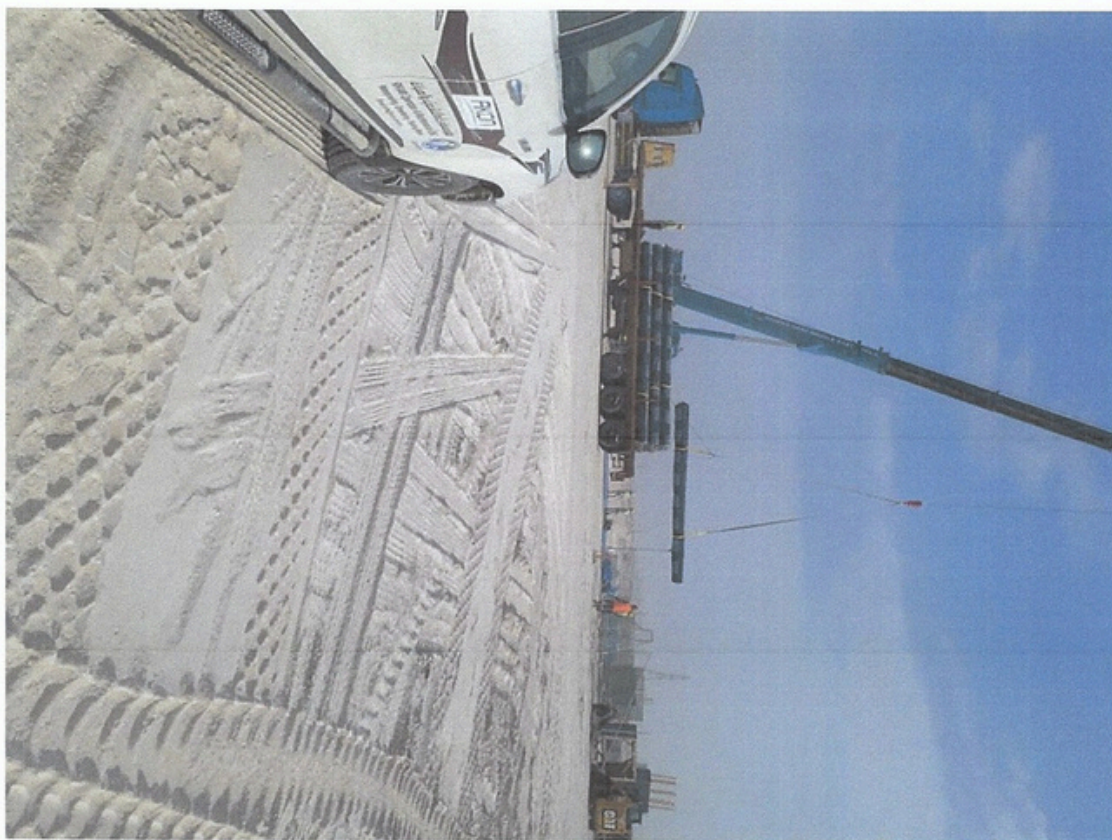
## MAJOR CONSTRUCTION PROJECT



## MAJOR CONSTRUCTION PROJECT



MAJOR CONSTRUCTION PROJECT





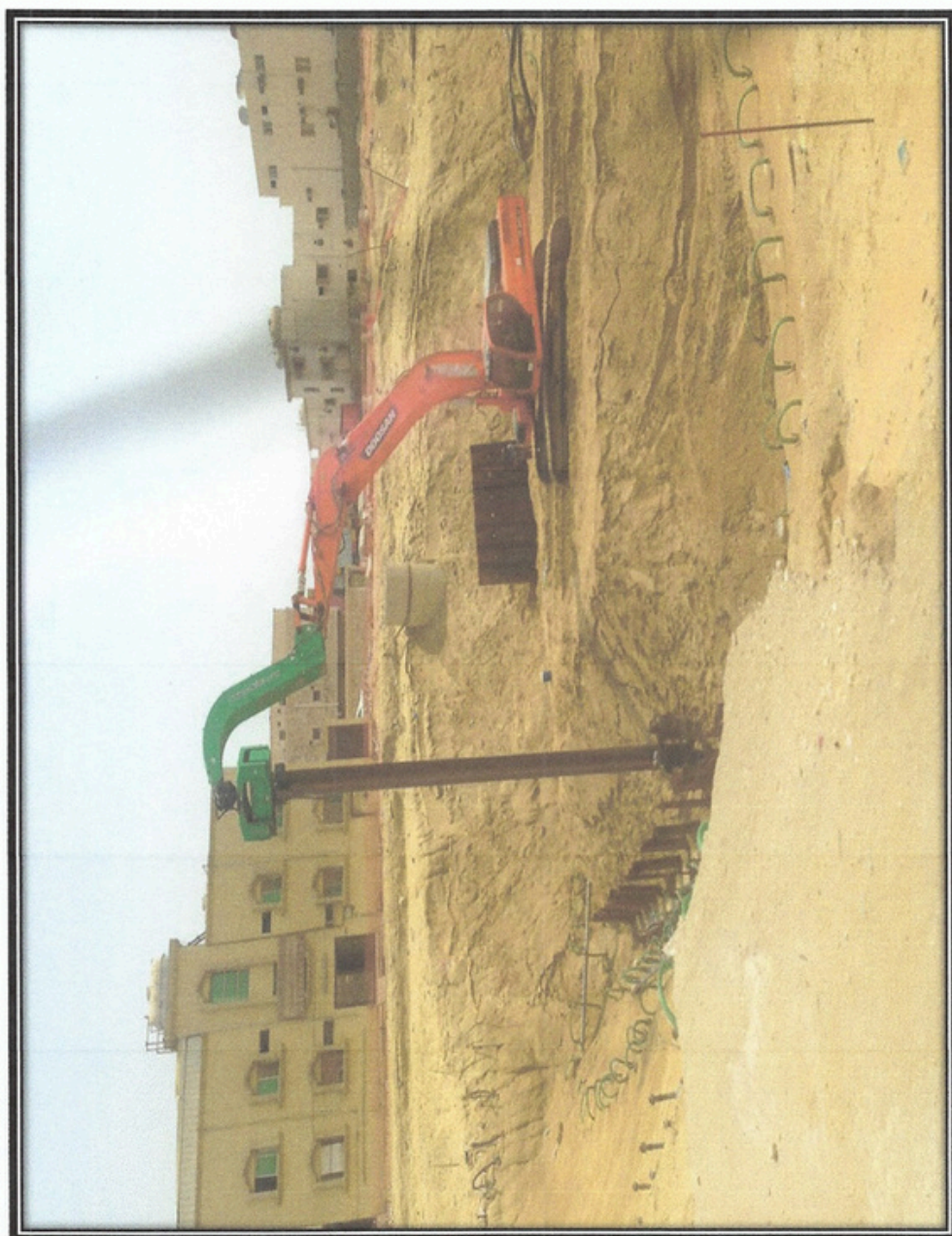
DEWATERING WORKS AT SHUBAILY @ QATIF



DEWATERING WORKS AT SHUBAILY @ QATIF



SHORING WORKS AT BASF 2<sup>ND</sup> INDUSTRIAL CITY, DAMMAM



SHORING WORKS FOR PVT. BUILDING @ AZIZIYAH, KHOBAR

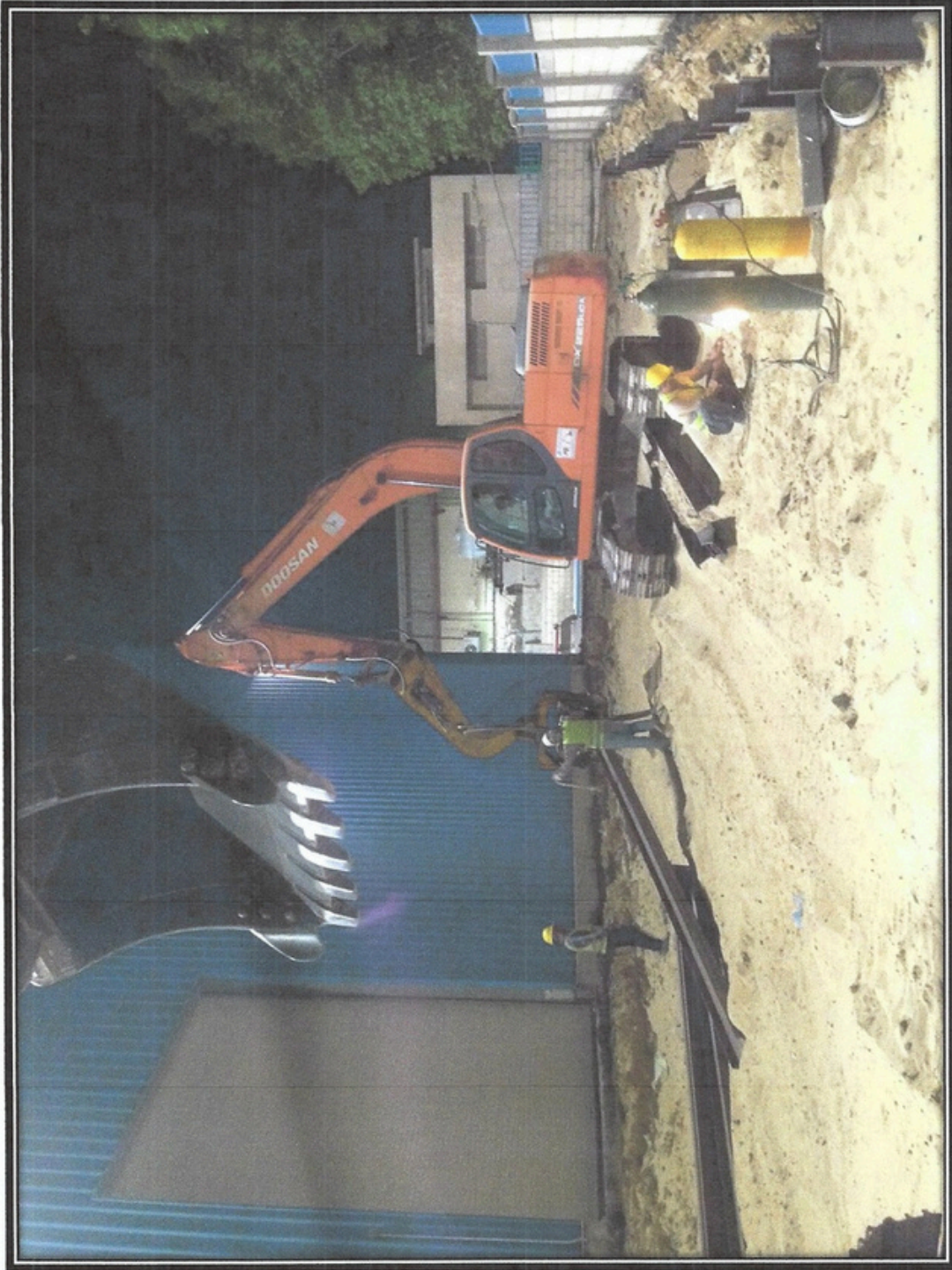


SHORING & DEWATERING WORKS FOR JAS CONT. @ SIHAT

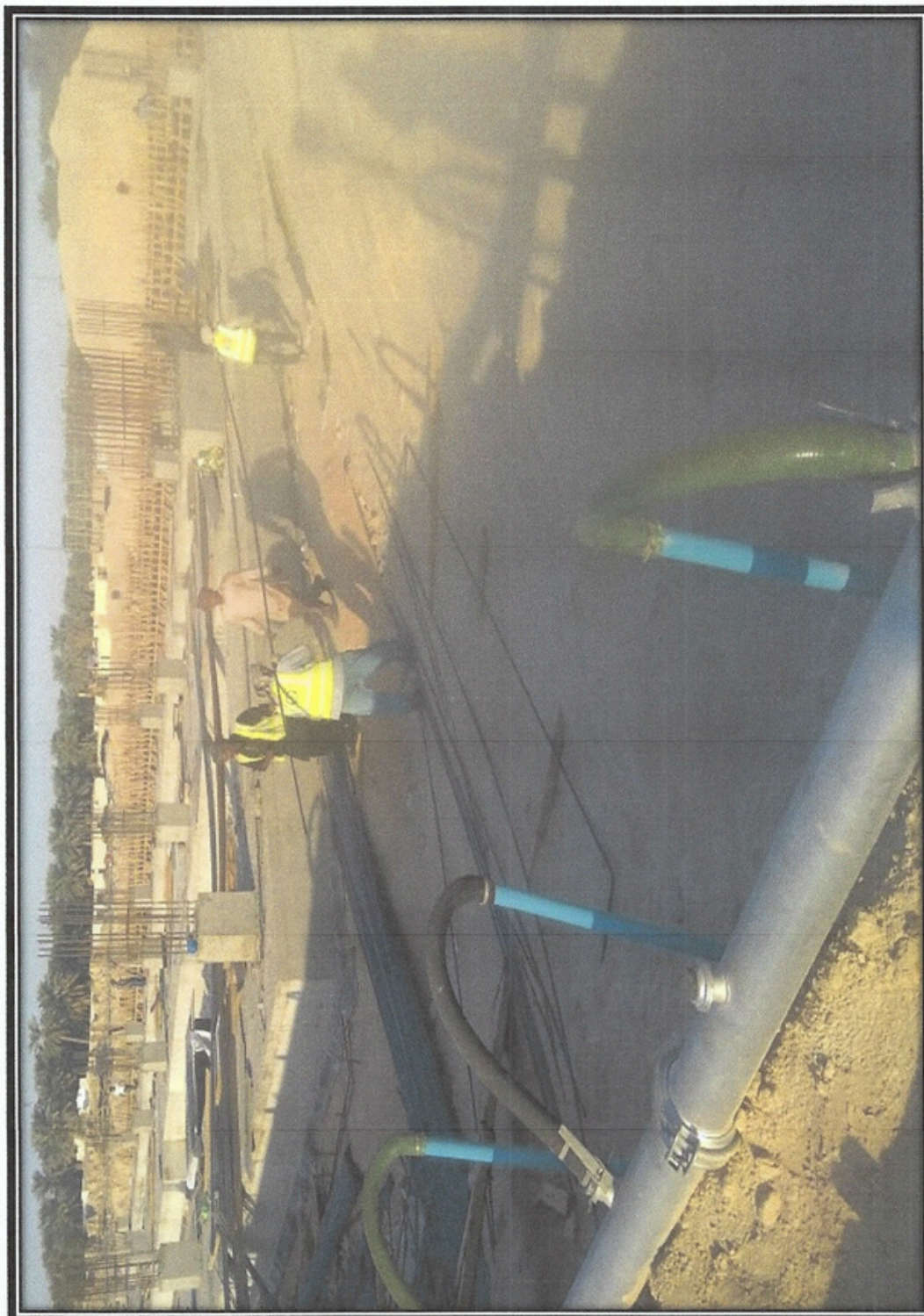




SHORING & DEWATERING WORKS FOR DAR AL QERNAS @ QATIF



SHORING WORKS @ BASF 2<sup>ND</sup> INDUSTRIAL CITY



DEWATERING WORKS @ WALK STRIP MALL, HASA



SHORING & DEWATERING WORKS FOR JAS CONT. @ SIHAT

## Customer Service Building

### Ministry of water

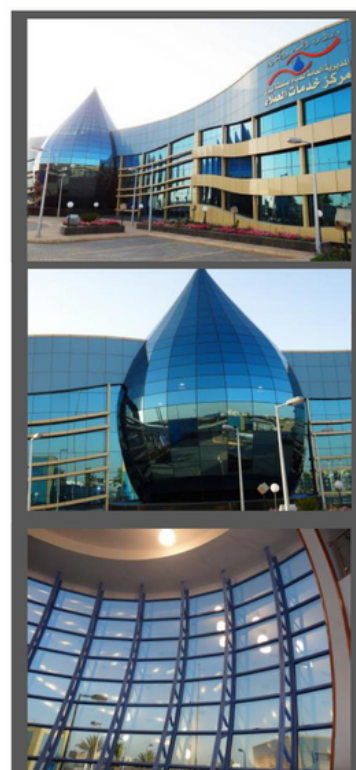
**Category:** Commercial & Retail

**City:** Tabuk, KSA

**Period:** 24 months

**Status:** Completed

**Description:** The project contains one basement and two floors of reinforced concrete with an area of a thousand meters per flat for the role, which is dedicated to customer service in Tabuk region including the general location of the walls, guard room, two gates and landscape with agriculture and trees.



## MAJOR CONSTRUCTION PROJECT



# Prince Fahab Bin Sultan

## University

**Category:** Education & Campus

**City:** Tabuk, KSA

**Period:** 36 months

**Status:** Completed

**Description:** The project comprises of a total area of 100,000 square meters, whereby 50,000 square meters is comprised of buildings. The rest is mainly flat roads, parking and sidewalks and green spaces. Components of the project included:

**Main building:** consisting of five floors and containing various offices, labs, restaurant and varied amphitheater. **Multi-purpose building:** consisting of three floors containing a multi-purpose hall, amphitheater, two runways, female admission offices, building for males and a separate one for females.



## Prince Fahab Bin Sultan

### Hospital

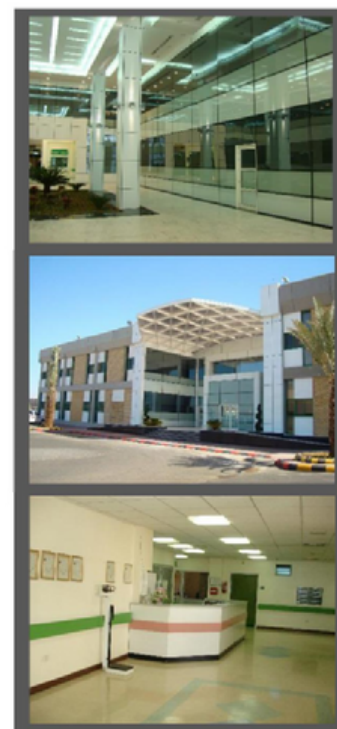
**Category:** Healthcare & Medical

**City:** Tabuk, KSA

**Period:** 36 months

**Status:** Completed

**Description:** This project was delivered as turnkey. It consists of a total area of 70,000 square meters, consisting of: Main building, which accommodates a number of units such as clinics, laboratory, pharmacy, X-ray room, housekeeping and others. Second floor consists of in-patients rooms, operation building and intensive care & admin buildings. Outside the main building includes accessories building, parking shades and security gates.





## Tabuk

### University

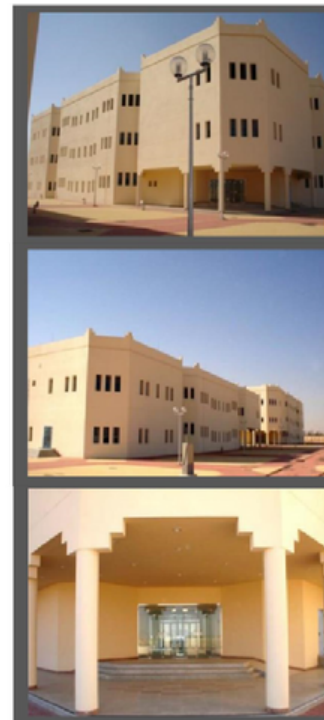
**Category:** Education & Campus

**City:** Tabuk, KSA

**Period:** 18 months

**Status:** Completed

**Description:** Project entails constructing of two buildings with an area of 1,250 square meters each. The first building includes workshops for mechanical works and the other building includes a laboratory for electrical works and a computer room.



# Sharma Tabuk

## Resort

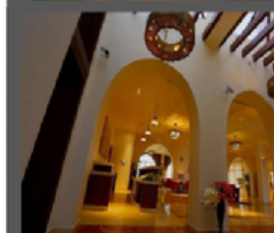
**Category:** Hospitality & Resort

**City:** Sharma, Northern Province, KSA

**Period:** 48 months

**Status:** Completed

**Description:** Project comprised of constructing a turnkey resort & tourism project that consists of: 51 Chalets, 17 Cabana, Restaurant, Ladies Club, Swimming Pool, Museum Data, Tel. & Security Network System, Water Network Systems Asphalt & Walkways Roads Green Areas & Soft Landscaping



# Prince Sultan

## Mosque

### Sharma

**Category:** Mosques Construction

**City:** Tabuk, KSA

**Period:** 29 months

**Status:** Completed

**Description:** Using high-grade construction material, Astra Construction team executed the building of Prince Sultan mosque in the city of Tabuk from frame to finish on every step of the way. The project included the construction of the mosque and the imam muezzin house along with other facilities.



## Hospital

**Category:** Healthcare & Medical

**City:** Tabuk, KSA

**Period:** 36 months

**Status:** Completed

**Description:** The project consisted of general site works with total area of 81,380 square meters. The main building is comprised of two floors; ground floor houses various departments, administrative offices, kitchen and a number of support units. First floor with total area 14,400 square meters includes department of pediatrics, endoscopy, ICU unit and other medical suites. The hemodialysis center consists of two floors with total area of 1,600 square meters in addition to a two-floor nurse residence, with an area of 4,200 square meters. Other works includes constructing the services building with an area of 1,600 square meters.



## Tabuk

### Rehabilitation Center

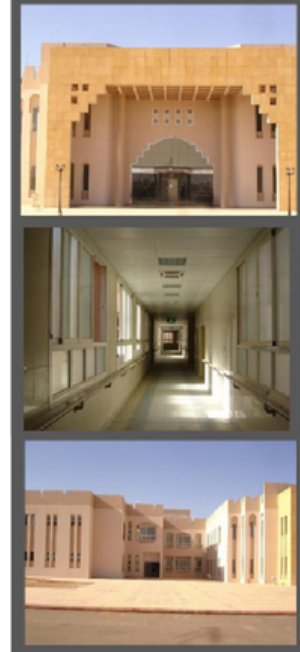
**Category:** Healthcare & Medical

**City:** Tabuk, KSA

**Period:** 36 months

**Status:** Completed

**Description:** Project comprised of constructing the main building, mosque, workshop, site works in addition to 10 dormitories and a daycare building.



## Umloj

### General Hospital

**Category:** Healthcare & Medical

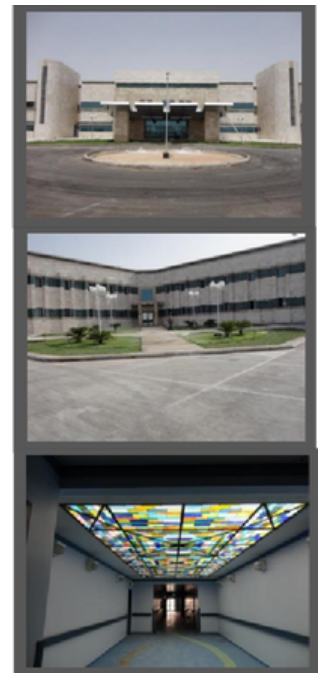
**City:** Umloj, Northern Province, KSA

**Period:** 36 months

**Status:** Completed

**Description:** Projects involved the construct of 100-bed hospital with all related facilities including Ancillary Building, Kidney Center, Nurse Housing, Power House, Chillers and all electromechanical works. Overall built up area is 20,000 square meters including external works, landscaping, soft landscaping, UGT, guard house.

1. Site area is 40,000 square meters.
2. Two-Storey Networks building with an area of 275 square meters.
3. Area of lobby construct in three-dimensional structure with an area of 2500 square meters.



## Al Gheithy Plaza

### Tabuk

### Jeddah

**Category:** Commercial & Retail

**City:** Jeddah, KSA

**Period:** 52 months

**Status:** Completed

**Description:** Projects involved the construct land area 852 meter square bolt up area 3250 meter square 1 basement and 6 typical floor



## Mansour street

### Underpass

**Category:** Commercial & Retail

**City:** Taif, KSA

**Period:** 20 months

**Status:** Completed

**Description:** Projects involved the construct 780m in length, 2 lanes in each direction and 2 service lanes. Top Slab at center Two Side Retaining walls Volume of concrete: 16,381 m3



## Naser Street

### Flyover

**Category:** Commercial & Retail

**City:** Taif, KSA

**Period:** 18 months

**Status:** Completed

**Description:** Projects involved the construct 750m in length, 3 lanes in each direction. Cast in situ - box section Post tensioned deck MSE wall

**Volume of concrete:** 10,000 m<sup>3</sup> **Excavation:** 20,000 m<sup>3</sup> **Steel:** 3,500 tons



## Administration

### Building

**Category:** Commercial & Retail

**City:** yanbu, KSA

**Period:** 36 months

**Status:** Completed

**Description:** Projects involved the construct volume of concrete-12,230 m<sup>3</sup> Steel: 2,250 tons Conference hall (106 visitors). 34 Official rooms. 3 High-class meeting rooms.5 Elevators 200 Covered cars parking The project subjected to electromechanical systems. Landscape area (16,000 m<sup>2</sup>) planted with grass and trees irrigated with automatically system.



## Saud Abad Rahman

### Underpass

**Category:** Commercial & Retail

**City:** Riyadh, KSA

**Period:** 24 months

**Status:** Completed

**Description:** Projects involved the construct 2 Directions, 3 lanes in each

direction with separate metro lane at the center.900 m in length

Volume of concrete: 30,000 m<sup>3</sup> Excavation: 200,000 m<sup>3</sup> Steel: 5,000

tons



## Passenger terminal

### Yanbu

**Category:** Commercial & Retail

**City:** Riyadh, KSA

**Period:** 18 months

**Status:** Completed

**Description:** Projects involved the construct covered R.C concrete hall with 300 m<sup>2</sup> area divided to two partitions arrival and departure zones at the ground level Arrival zone has electrical bags motion First floor includes service offices The project subjected to electromechanical systems (AC, firefighting, CCTV, BMS ...etc.) with two skylights and timbered glass certain walls at its fronts



## PR.Muteib

### Dammam

**Category:** Commercial & Retail

**City:** Dammam, KSA

**Period:** 52 months

**Status:** Completed

**Description:** Projects involved the construct volume of concrete (lower Structures): 62,835 m<sup>3</sup> Volume of concrete (Upper Structures): 23,648 m<sup>3</sup> Excavation: 26,337.66 m<sup>3</sup> Prestressed Steel: 710.60 tons



## Massarat Box

### Culvert

**Category:** Commercial & Retail

**City:** Taif, KSA

**Period:** 41 months

**Status:** Completed

**Description:** Projects involved the 260 m Length, 3 cells in each direction Cell height: 2.76m Volume of concrete: 13,014 m<sup>3</sup> Excavation: 36,157 m<sup>3</sup> Steel: 1,887 tons





## Siddiq Road

### Flyover

**Category:** Commercial & Retail

**City:** Tabuk, KSA

**Period:** 41 months

**Status:** Completed

**Description:** Projects involved the 260 m Length, 3 cells in each direction

**Cell height:** 2.76m **Volume of concrete:** 13,014 m<sup>3</sup> **Excavation:** 36,157 m<sup>3</sup>

**Steel:** 1,887 tons



## Control Tower

### Industrial Area

**Category:** Commercial & Retail

**City:** Yanbu, KSA

**Period:** 15 months

**Status:** Completed

**Description:** Projects involved the volume of concrete: 8,000 m<sup>3</sup>

**Excavation:** 3,500 m<sup>3</sup> **Steel:** 2,250 tons The project constructed upon piles and contains: circular R.C concrete walls (Dia. 9.75 m) executed by slip form method Total height of tower is more than 112m electromechanical systems (AC, firefighting, CCTV, BMS.... etc.)



## Dr.Talal Ghazzawi

### Residence

**Category:** Commercial & Retail

**City:** Yanbu, KSA

**Period:** 21 months

**Status:** Completed

**Description:** Projects involved the land area: 148,530 m2 Built-up area: 11,000 m2 Swimming pool area: 1,000 m2



### Roubi 1

### Compound

**Category:** Commercial & Retail

**City:** Al Rawadh, KSA

**Period:** 28 months

**Status:** Completed

**Description:** Projects involved the Land area: 2,895 m2 Built-up area: 3,646 m2 Swimming pool: 67 m2



## Roubi 5 Compund

### Al Salama

**Category:** Commercial & Retail

**City:** Al salama, KSA

**Period:** 26 months

**Status:** Completed

**Description:** Projects involved the land area: 3,327 m2 Built-up area: 3,789 m2



## Roubi 6-7 Compund

### Al Hamara

**Category:** Commercial & Retail

**City:** Al Hamara, KSA

**Period:** 42 months

**Status:** Completed

**Description:** Projects involved the Land area: 4,184 m2 Built-up area: 4,079 m2 Swimming pool: 585 m2



## Raida Bin ladin

### Compound

**Category:** Commercial & Retail

**City:** Jeddah, KSA

**Period:** 15 months

**Status:** Completed

**Description:** Projects involved the Land area: 2,495 m<sup>2</sup> Built-up area: 2,846 m<sup>2</sup> Swimming pool: 73 m<sup>2</sup>



## Al Nawaras

### Resort

**Category:** Civil & & electromechanical Work

**City:** Jeddah, KSA

**Period:** 15 months

**Status:** Completed

**Description:** Projects involved the 40 Chalets, 17 Cabana, Restaurant, Ladies Club, Swimming Pool, Museum Data, Tel. & Security Network System, Water Network Systems



## Al Nawaras

### Resort

International Standard Housing Compound

Consisting Of:

- 14 Single Villas
- 72 Duplex Villas
- Family Club House With Family Swimming Pool & Jacuzzi
- Recreation Building
- Multipurpose Building
- Bowling Arena
- 2 Children Playgroud
- Green Areas For Barbeue Gatherings
- Tennis Court
- Public Swimming Pool, Children Swimming Pool And Jacuzzi.
- Drivers And Labors Housing
- Water Wells And 3 Disalination Plants.



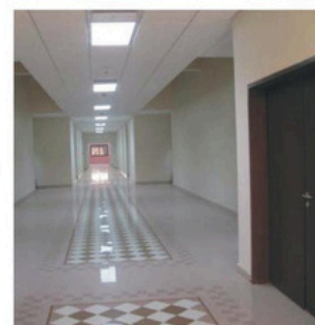
## Al Nawaras

### Resort

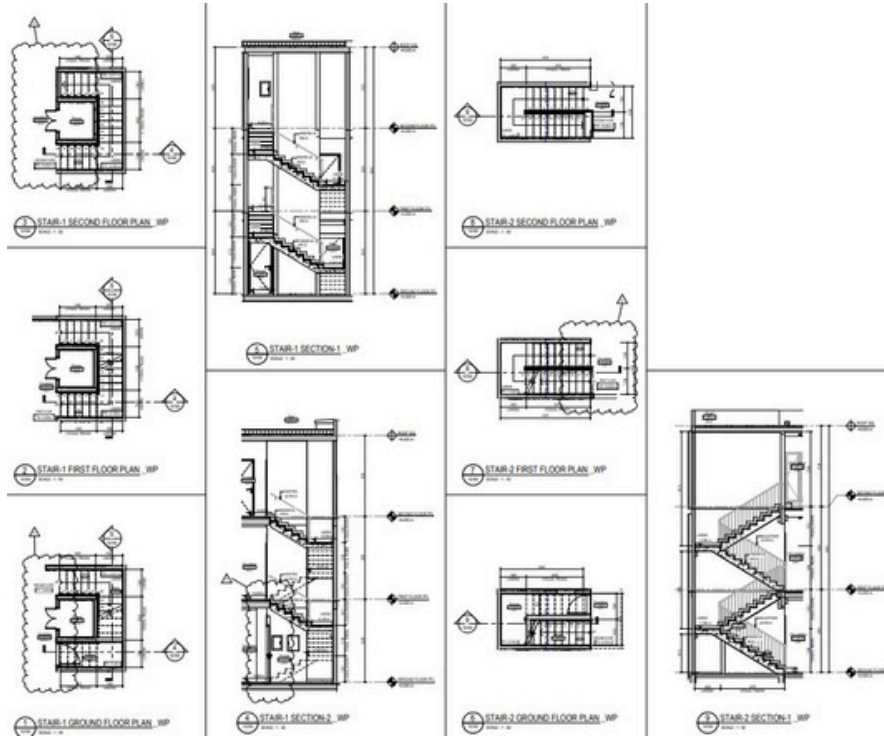
International Standard Housing Compound

Consisting Of:

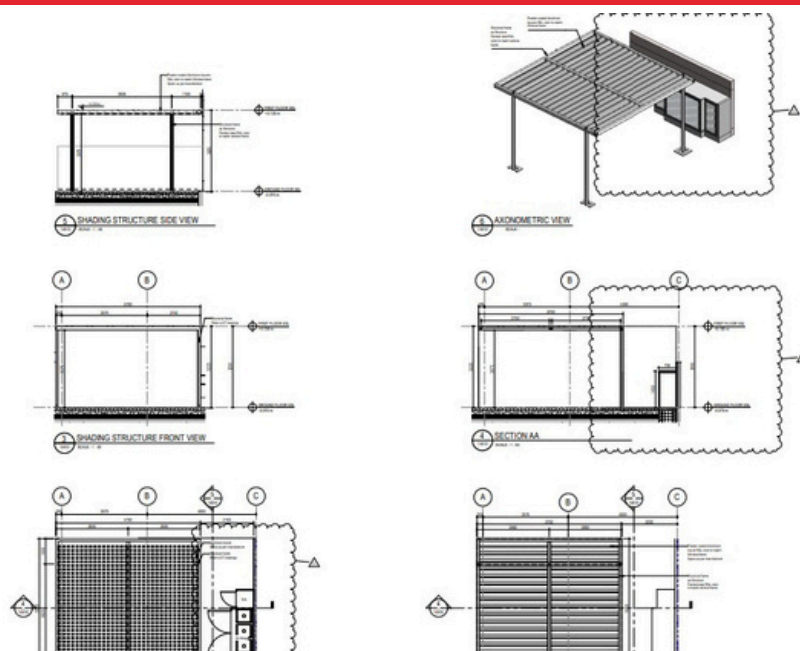
- 14 Single Villas
- 72 Duplex Villas
- Family Club House With Family Swimming Pool & Jacuzzi
- Recreation Building
- Multipurpose Building
- Bowling Arena
- 2 Children Playgroud
- Green Areas For Barbeue Gatherings
- Tennis Court
- Public Swimming Pool, Children Swimming Pool And Jacuzzi.
- Drivers And Labors Housing
- Water Wells And 3 Disalination Plants.



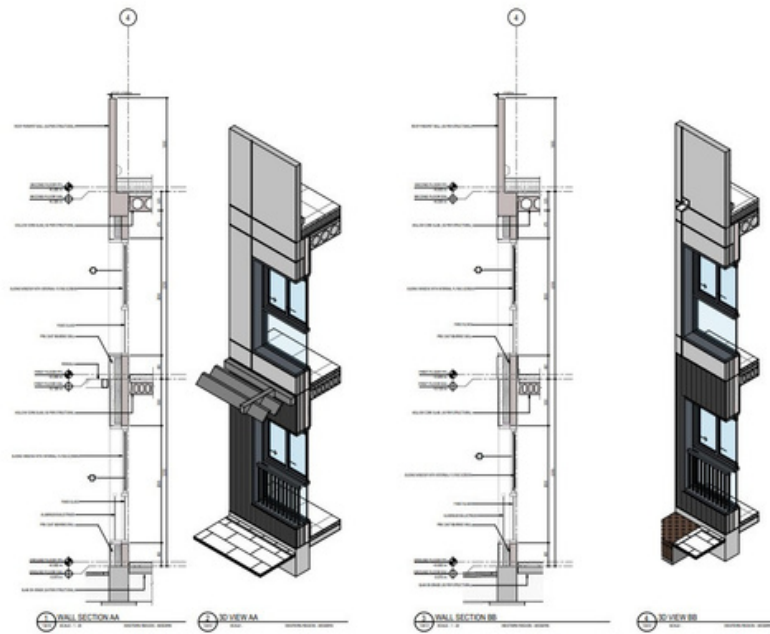
# Major project-1



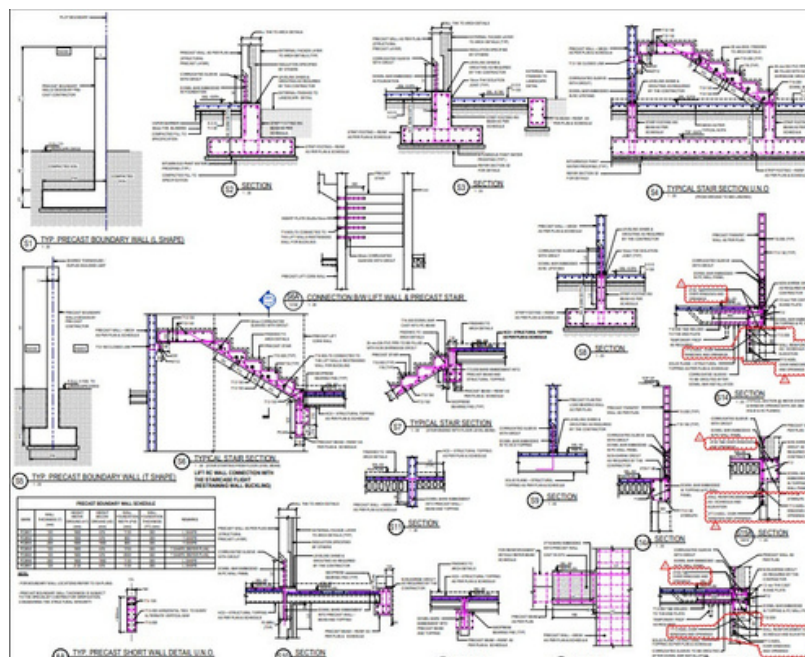
# Major project-2



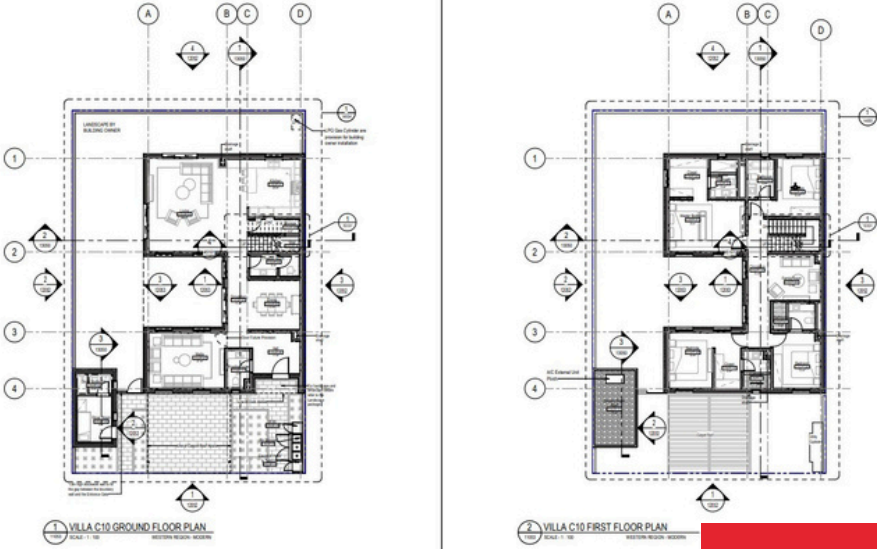
## Major project-3



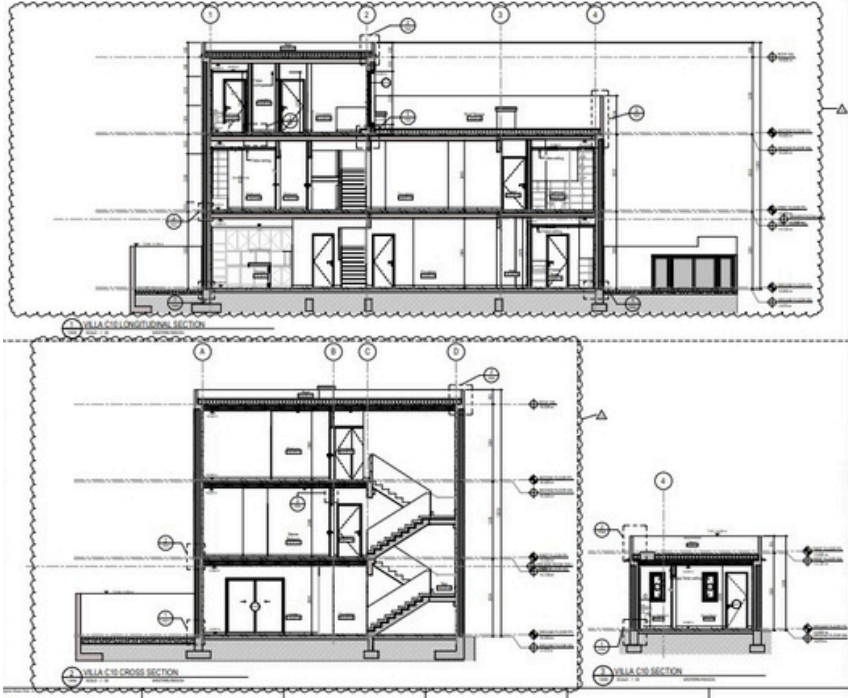
## Major project-4



# Major project-5

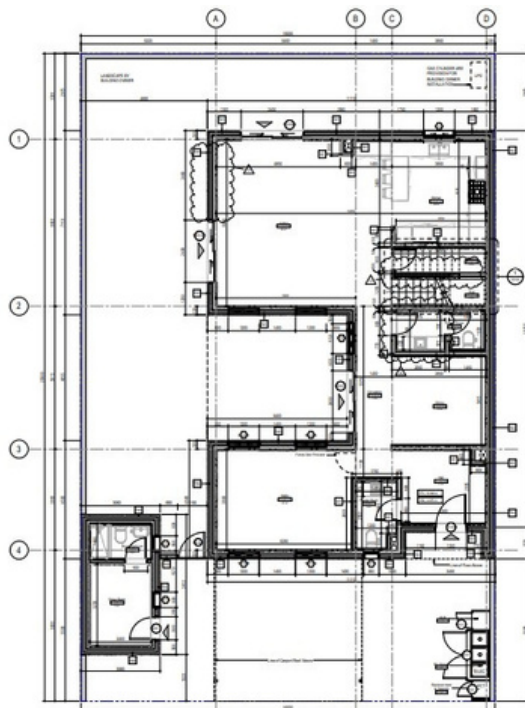


# Major project-6

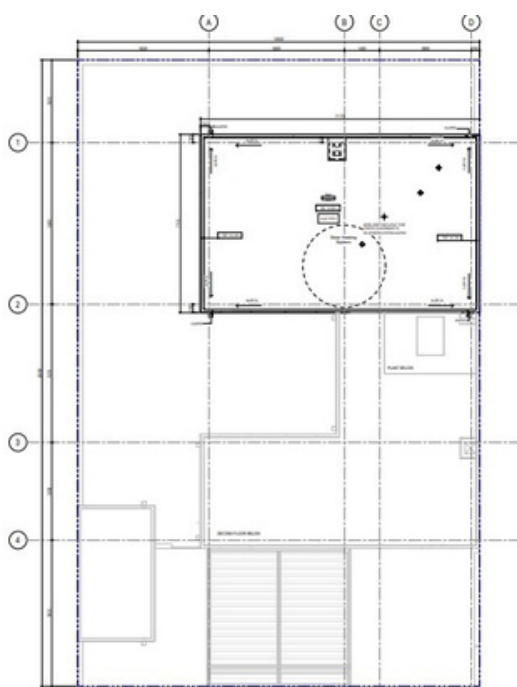




## Major project-7

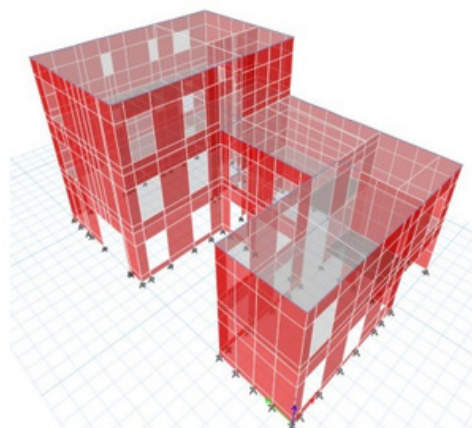


## Major project-8

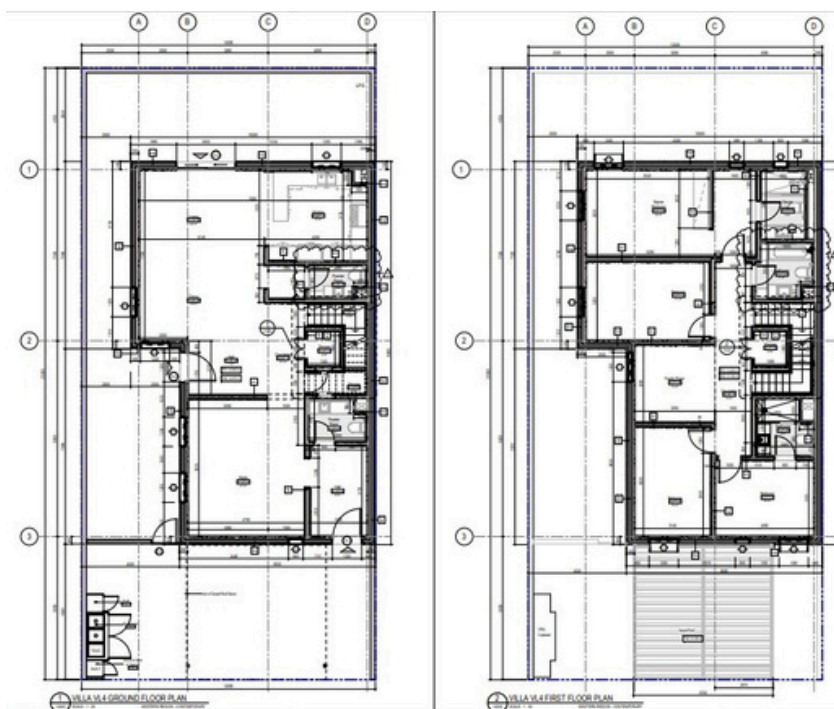


## Major project-9

### ROSHN PROJECT



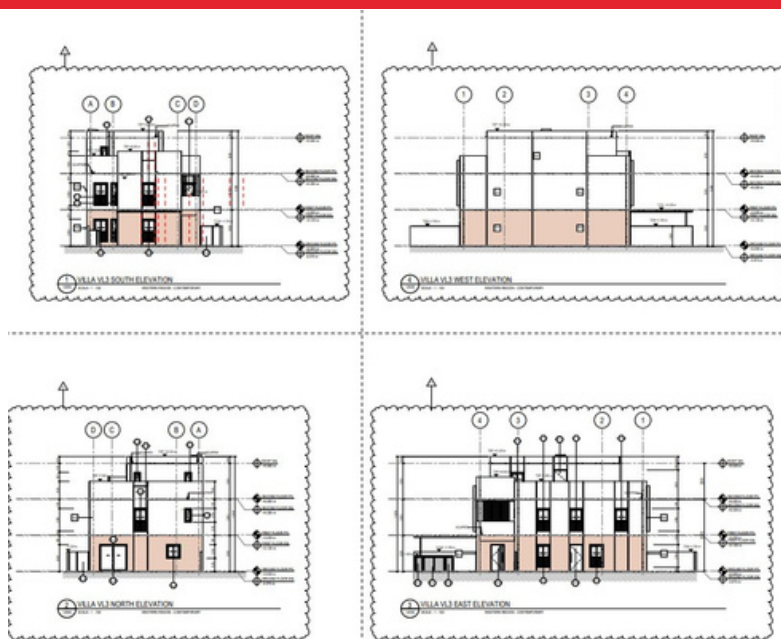
## Major project-10



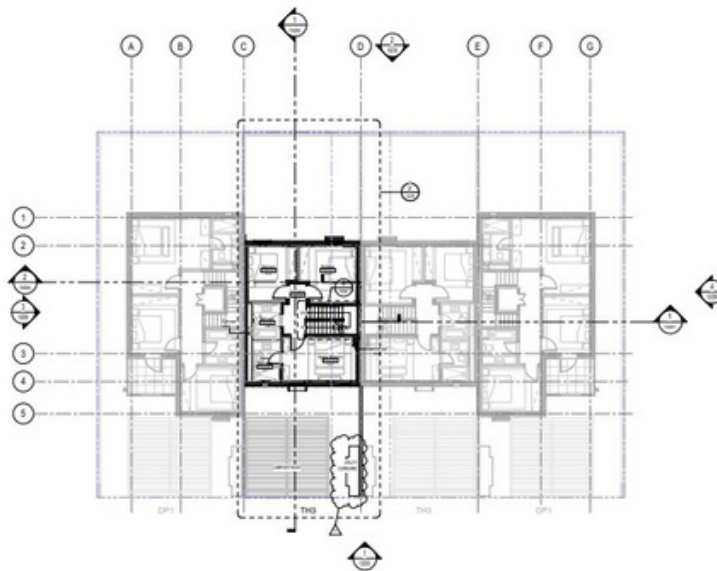
## Major project-11



## Major project-12

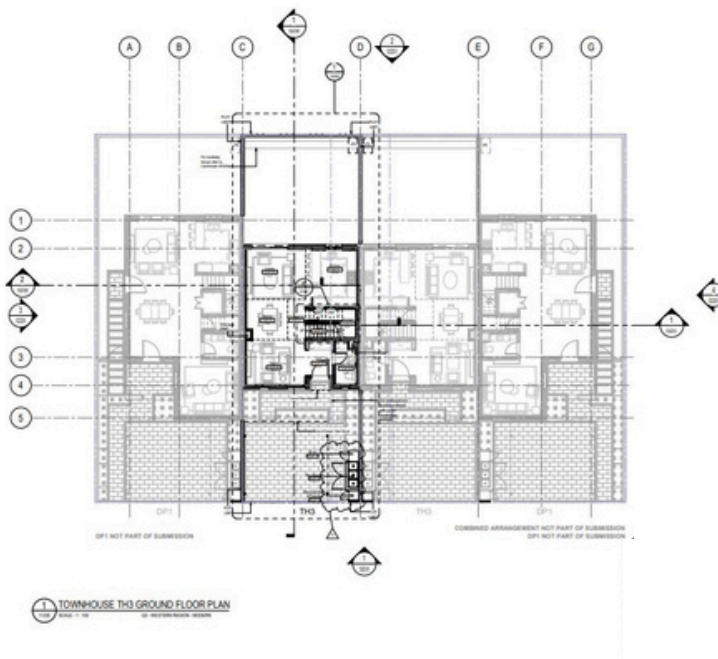


## Major project-13



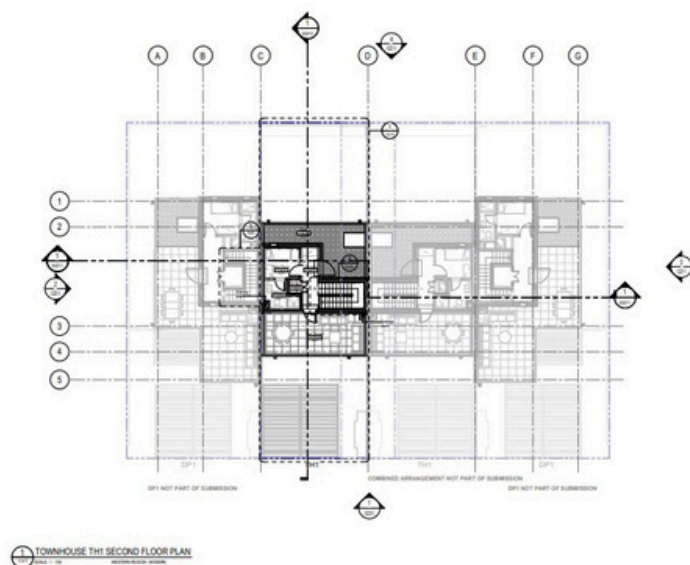
TOWNHOUSE TH3 FIRST FLOOR PLAN  
Scale: 1:50

## Major project-14



TOWNHOUSE TH3 GROUND FLOOR PLAN  
Scale: 1:50

## Major project-15



## Major project-16



# Al Nawaras

**Category:** Civil & electromechnical Work

**City:** Jeddah, KSA

**Period:** 15 months

**Status:** Completed

**Description:** Projects involved the 40 Chalets, 17 Cabana, Restaurant, Ladies Club, Swimming Pool, Museum Data, Tel. & Security Network System, Water Network Systems



# Product Technical

## Specifications

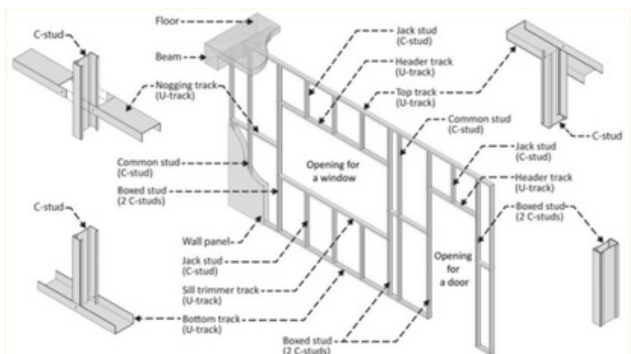
- Civil Works: Local mosaic of ceramic tiles finish fixed over a concrete slab 10cm thick on top of base
- course aggregate 15cm thick, or according to client's request.
- Sanitary Works: Porcelain washbasins on steel brackets, with showers measuring 80x80cm and constructed from pre-painted steel. Toilets are fitted with cisterns and necessary hardware. All porcelain is white in color.
- Electrical works: Conducting: All conduits are flexible, PVC pipes inside sandwich panels and between roofs.
- Sockets: 13amp white plastic three pin sockets are provided. Sockets and Switchers are Vole type.
- Lighting: Consists of globe lights or local double batten standard fluorescent lights LED lighting can be used.
- Distribution Board: All boards are according to load.
- Earthing and earth leakage circuit breakers are optional.
- Internal Ceiling: Of white gypsum board 600x600mm fibre, supported on a pre-painted steel grid of T-sections.
- For portable units, ceilings can be comprised of sandwich panels or decorative boards, either of which are fixed on a wooden grid with insulation.



# Product Technical

## Specifications

- Steel Chasse and Flooring (For portable units only) PVC rolls or tiles are used for flooring on our portable units, which are laid on wooden boards that are fixed on galvanized, corrugated steel sheets for protection.
- The steel chassis can be of the portable type, the skid type or carried on axles and wheels (For portable units only).



# Product Technical

## Specifications

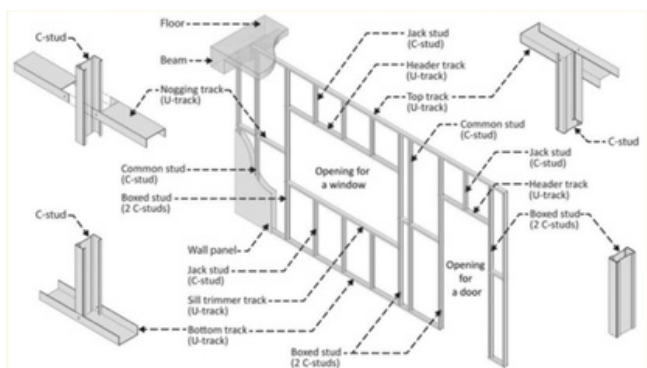
- Civil Works: Local mosaic of ceramic tiles finish fixed over a concrete slab 10cm thick on top of base
- course aggregate 15cm thick, or according to client's request.
- Sanitary Works: Porcelain washbasins on steel brackets, with showers measuring 80x80cm and constructed from pre-painted steel. Toilets are fitted with cisterns and necessary hardware. All porcelain is white in color.
- Electrical works: Conducting: All conduits are flexible, PVC pipes inside sandwich panels and between roofs.
- Sockets: 13amp white plastic three pin sockets are provided.
- Sockets and Switchers are Vole type.
- Lighting: Consists of globe lights or local double batten standard fluoresecent lights LED lighting can be used.
- Distribution Board: All boards are according to load.
- Earthling and earth leakage circuit breakers are optional.
- Internal Ceiling: Of white gypsum board 600x600mm fibre, supported on a pre-painted steel grid of T-sections.
- For portable units, ceilings can be comprised of sandwich panels or decorative boards, either of which are fixed on a wooden grid with insulation.



# Product Technical

## Specifications

- Steel Chasse and Flooring (For portable units only) PVC rolls or tiles are used for flooring on our portable units, which are laid on wooden boards that are fixed on galvanized, corrugated steel sheets for protection.
- The steel chassis can be of the portable type, the skid type or carried on axles and wheels (For portable units only).





## CERTIFICATE

الرقم الموحد : ٧٠٣٨٥٧١١٥٩  
رقم المنشأة : ١٠٠٩٩٢٣٥٧  
التاريخ : ١٤٤٥/٠٨/٢٥ هـ

## شهادة تسجيل الشركة Company Registration Certificate

وزارة التجارة  
Ministry of Commerce



الاسم التجاري للشركة : شركة آنا ستار للمقاولات ( شخص واحد)

نوعها : ذات مسؤولية محدودة جنسيتها : سعودي

مدة الشركة : تبدأ من : ١٤٤٥/٠٨/٢٥ هـ وتنتهي في :

مركزها الرئيسي : ٣٤٥٤، عويضة، ٦٩٠٧

هاتف : ١٢٨٣٦ الرمز البريدي :

النشاط : للاطلاع على بيانات الأنشطة الرجاء مسح الرمز التجاري

رأس المال : ١٠٠,٠٠٠ ريال سعودي

المديرون : 1 محمد الياس صاحب خان

2

3

4

5

6

7

8

9

10

11

12

13

14

15

سلطات المدير/المديرون : حسب ما نص عليه عقد الشركة

يشهد مكتب السجل التجاري بمدينة الرياض : بأنه تم تسجيل الشركة المذكورة أعلاه بمدينة الرياض

وتنتهي صلاحية الشهادات في : ١٤٤٦/٠٨/٢٥ هـ بموجب الإيصال رقم : ٢٤٠٣٢١٩٥٢٤٤٩

وتاريخ : ١٤٤٥/٠٨/٢٤ هـ



To Verify The Information Of This Certificate Visit <http://qr.mc.gov.sa> يمكنكم التحقق من صحة هذه الشهادة بالدخول على

+966 11 294 4444 | الرياض 11162 | Kingdom of Saudi Arabia | المملكة العربية السعودية | www.mc.gov.sa MCgovSA @ f t y o



TIN 3121007321 الرقم المميز  
Certificate No. 100241101284962 رقم الشهادة  
Certificate date 12/03/2024 تاريخ الشهادة



هيئة الزكاة والضريبة والجمارك  
Zakat, Tax and Customs Authority

المملكة العربية السعودية  
Kingdom of Saudi Arabia

## شهادة تسجيل في ضريبة القيمة المضافة VAT Registration Certificate

تشهد هيئة الزكاة والضريبة والجمارك بأن المكلف أدناه مسجل في ضريبة القيمة المضافة بتاريخ ٢٠٢٤/٣/١٢ م  
The Zakat, Tax and Customs Authority certifies that taxpayer below is VAT registered on 12/03/2024 AD

Taxpayer Name	شركة أنا ستار للمقاولات	اسم المكلف
VAT Registration Number	312100732100003	رقم التسجيل الضريبي
Effective Registration Date	2024/04/01	تاريخ نفاذ التسجيل
Taxpayer Address	الرياض، الرياض، عويضة، 12836	عنوان المكلف
CR / License Contact / ID No	1010992357	رقم السجل التجاري / الرخصة / العقد / الهوية
Tax Period	Quarterly-سنتوي-ربع	الفترة الضريبية
First Filing due date	2024/07/31	تاريخ استحقاق أول إقرار ضريبي

ملاحظة: كمكلفين مسجلين في ضريبة القيمة المضافة، لا يجوز لكم تحصيل ضريبة القيمة المضافة من عملائكم قبل تاريخ نفاذ التسجيل في الضريبة. و في حال تبين غير ذلك ستقوم هيئة الزكاة والضريبة والجمارك بتنفيذ الغرامات المستحقة

Note: As a VAT registered taxpayer, you are not allowed to collect VAT from your customers prior to the effective date of the tax registration. If otherwise approved, The ZAKAT, Tax and Customs Authority will impose the applicable penalties



لمسجل في ضريبة القيمة المضافة، لا يجوز لك تحصيل ضريبة القيمة المضافة من عملائك قبل تاريخ نفاذ التسجيل في الضريبة. و في حال تبين غير ذلك، ستقوم الهيئة العامة للزكاة والدخل بتنفيذ الغرامات المستحقة



## CERTIFICATE



شهادة اشتراك  
Membership Certificate

غرفة الرياض  
Riyadh Chamber

Membership No. :	914592	914592	رقم العضوية الموحد :
Date of Issue:	05/03/2024	2024/03/05	تاريخ الاصدار:
Membership Class :	Sixth	السادسة	درجة العضوية :
Riyadh Chamber Certifies			تشهد الغرفة التجارية الصناعية بالرياض بأن
			شركة آنا ستار للمقاولات
Commercial Registration No.	1010992357	1010992357	مقيدة بالسجل التجاري / الترخيص رقم :
Certificate Expires on	23/02/2025	2025/02/23	ينتهي سريان هذه الشهادة في



الخدمات الإلكترونية لغرفة الرياض - بوابة أعمال © E-Services Riyadh Chamber

920004565

- يلزم التحقق من الوثيقة عبر الرابط <https://mybusiness.chamber.sa> ، أو تطبيق (سند) للأجهزة المحمولة أو الرقم الموحد دون ادنى مسؤولية على الغرفة عن محتوى الوثيقة.
- تعد هذه الورقة من الوثائق الإلكترونية لغرفة الرياض، ويمنع تعديلها اول محاولة العبث بها وتصبح لاغية حال محاولة تعديلها وتعرض صاحبها للملاحقة القانونية.

CERTIFICATE

# Anna Star Company Are ISO Register

Certificate



# Certificate of Compliance

This is to certify that management system of

## ANNA-STAR CONTRACTING COMPANY

Postal code 12836, Building number 3454, Uwaidah street, Al-Malaz Dist. Riyadh city kingdom Of Saudi Arabia.

follows proper Quality Management System according to  
ISO 9001:2015 to maintain manufacture and sales of  
Anna Star Contracting Company  
and timely take all necessary step to achieve QMS's  
measures for the purpose of Construction and Contracting Company.

Date of Registration	: 27 sep 2024
1st Surveillance Due	: 26 sep 2025
2nd Surveillance Due	: 26 sep 2026
Certificate Expiry (subject to the company maintaining its system to the required standard)	: 26 sep 2027

Certificate# 502147894

To Verify Certificate Contact through [info@quality-veritas.com](mailto:info@quality-veritas.com)



*Jamil*  
Authorised Signatory

### Quality Veritas Limited

Validity of this certificate is subject to annual surveillance audits done successfully

[www.quality-veritas.com](http://www.quality-veritas.com) [info@quality-veritas.com](mailto:info@quality-veritas.com)

Address: 9th Bankwell Street Manchester M15 5LN

Certificate



# Certificate of Compliance

This is to certify that the Environment Management System of

## ANNA-STAR CONTRACTING COMPANY

Postal code 12836, Building number 3454, Uwaidah street, Al-Malaz Dist. Riyadh city kingdom Of Saudi Arabia.

Has been independently assessed and is compliant with the requirements of

### ISO 45001:2018

### Occupational health and Safety Management System

This certificate is applicable to the following product of services ranges

Construction and Contracting

Certificate NO: AE 100000567/03/H

Dots of this cortificate	03 April 2024	Date of initial Registration	03 April 2025
Date of Certificate Expiry	02 April 2026	Re-Certification Due	02 April 2027

This certificate is the property of Anna Star Contracting Company certification and remains valid Subject to satisfactory surveillane audits.

  
\_\_\_\_\_  
Director



Certificate



# Certificate of Compliance

This is to certify that management system of

## ANNA-STAR CONTRACTING COMPANY

Postal code 12836, Building number 3454, Uwaidah street, Al-Malaz Dist. Riyadh city kingdom Of Saudi Arabia.

follows proper management system according to  
**ISO 14001: 2015** to maintain health and safety systems and timely take all necessary steps to access and maintain health and safety measures among their working staffs and labour.

Date of Registration	: 27 sep 2024
1st Surveillance Due	: 26 sep 2025
2nd Surveillance Due	: 26 sep 2026
Certificate Expiry (subject to the company maintaining its system to the required standard)	: 26 sep 2027

**Certificate# 503167874**

To Verify Certificate Contact through [info@quality-veritas.com](mailto:info@quality-veritas.com)



*Janilo*  
Authorised Signatory

### Quality Veritas Limited

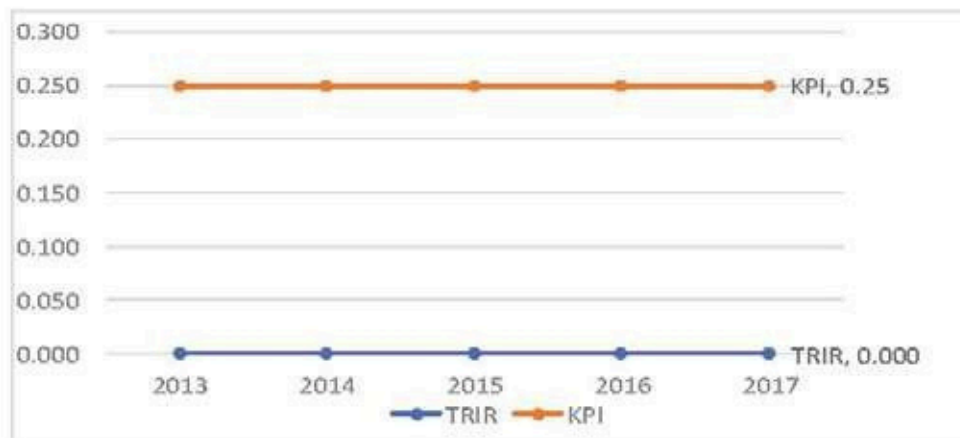
Validity of this certificate is subject to annual surveillance audits done successfully

[www.quality-veritas.com](http://www.quality-veritas.com)      [info@quality-veritas.com](mailto:info@quality-veritas.com)

Address: 9th Bankwell Street Manchester M15 5LN

	Years				
	2013	2014	2015	2016	2017
Man-hours Worked	5,995,984	7,859,737	10,493,950	12,697,680	15,879,100
Lost Time Incident (LTI)	0	0	0	0	0
Fatalities (FAT)*	0	0	0	0	0
Environmental Incident (EI)*	0	0	0	0	0
Lost Time Incident Rate (LTIR)	0	0	0	0	0
Total Recordable Incident Rate (TRIR)	0	0	0	0	0
Severity Rate (SR)	0	0	0	0	0

Year	Man-Hours	Recordable	TRIR	Year	Man-Hours	Recordable	TRIR	KPI
2013	5995984	0	0.000	2013	5995984	0	0.000	0.25
2014	7859737	0	0.000	2014	13855721	0	0.000	0.25
2015	10493950	0	0.000	2015	18353687	0	0.000	0.25
2016	12697680	0	0.000	2016	23191630	0	0.000	0.25
2017	15879100	0	0.000	2017	28576780	0	0.000	0.25



SAFETY PERFORMANCE						
1. Injury and illness data						
A. Total employee (excluding sub-contractor) hours worked in the last three years						
Year	2016	2017	2018			
Total hours	12,697,680	15,879,100	17,520,00			
B. Provide the following data						
For calculating rates please utilizing the following:						
$\text{rate} = \frac{\text{total instances} \times 200,000}{\text{total employee hours}}$						
	2016		2017		2018	
	No	Rate	No	Rate	No	Rate
Injury related fatality no. and rate	0	0	0	0	0	0
Lost work day no. and rate	0	0	0	0	0	0
Restricted work day no. and rate	0	0	0	0	0	0
Medical treatment no. and rate	0	0	0	0	0	0
Total recordable injury no. and rate	0	0	0	0	0	0

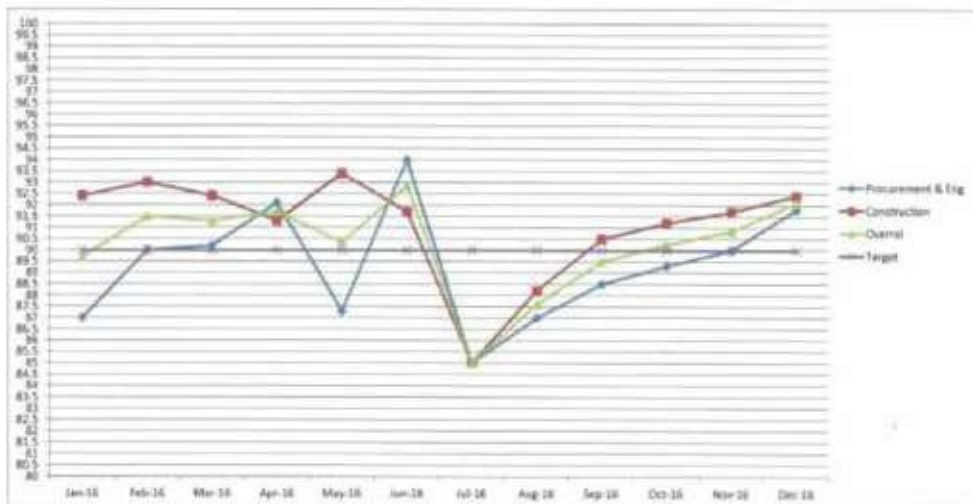




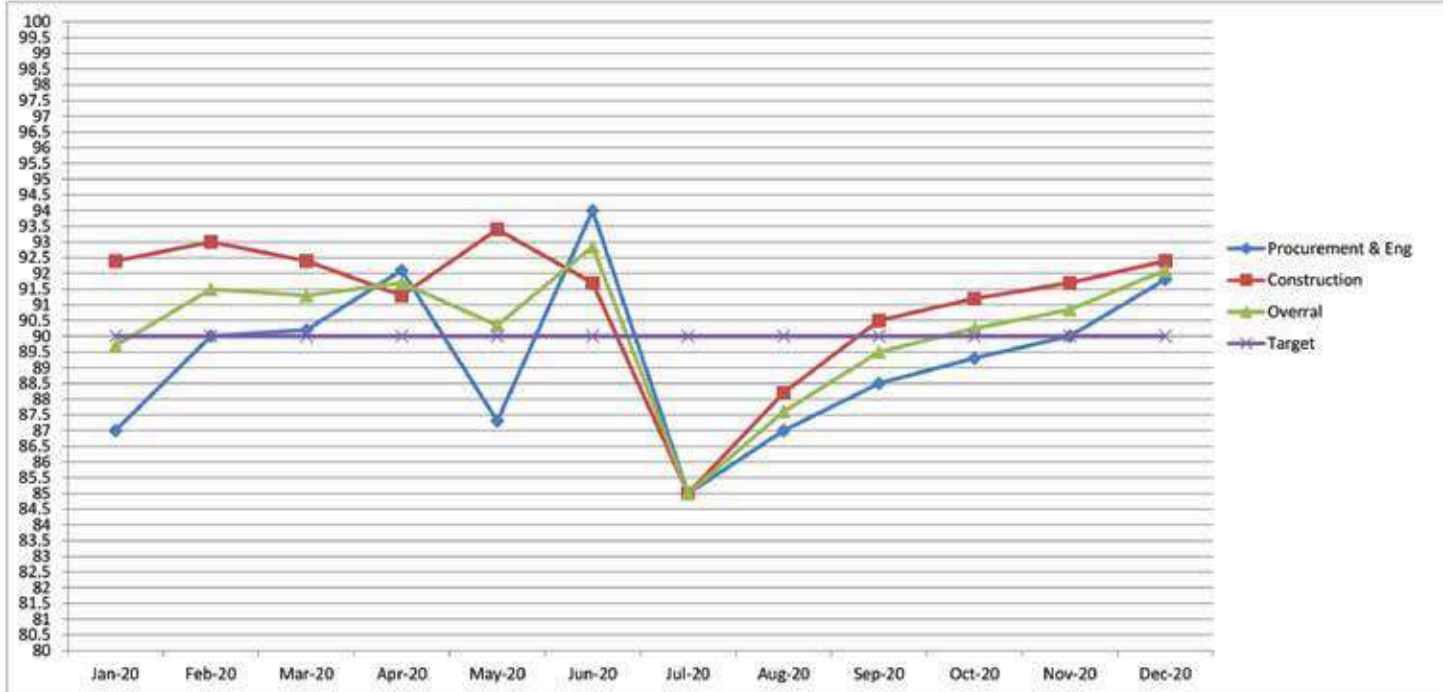
## PROJECT SAFETY PERFORMANCE REPORT FOR YEAR 2015 TO 2019

YEAR	2015	2016	2017	2018	2019	TOTAL
MANPOWER	2,915	3,527	4,411	4,800	5,061	20,714
MANHOURS	10,493,950	12,697,680	15,879,100	17,520,000	18,220,800	74,811,530
HAZOB(UNSAFE ACT/ UNSAFE CONDITION)	655	961	1481	1246	1132	5475
DRILLS	12	12	12	14	14	64
TOOLBOX TALK	977	1050	1125	1560	1872	6584
JOB SAFETY ANALYSIS	122	155	188	133	163	761
EMPLOYEE RECOGNITION	48	57	126	144	171	546
CAMP INSPECTION	8	18	22	8	12	68
NEAR MISS	11	8	5	17	22	63
FIRST AID	7	8	3	3	3	24
LOST TIME INJURY	0	0	0	0	0	0
MAN DAYS LOST	0	0	0	0	0	0
FIRE	0	0	0	0	0	0
RESTRICTED DUTY INJURY	0	0	0	0	0	0
RESTRICTED DUTY DAYS	0	0	0	0	0	0
MEDICAL TREATMENT INJURY	0	0	0	0	0	0
PROPERTY DAMAGED	0	0	0	0	0	0
MOTOR VEHICLE ACCIDENT	0	0	0	0	0	0
ENVIRONMENTAL INCIDENT	0	1	1	0	0	2
SAFETY VIOLATION REPORTS	3	3	2	8	14	30

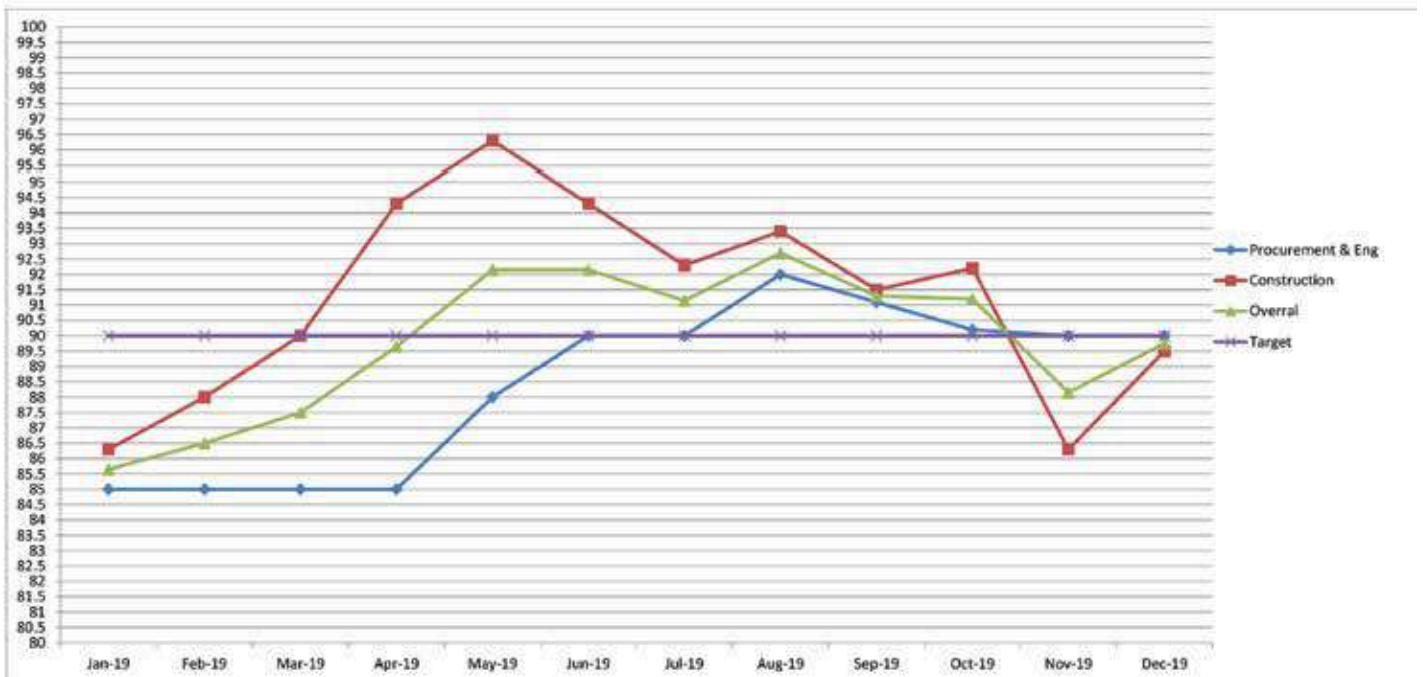
### PQI



PROJECT QUALITY INDEX - PQI 2020



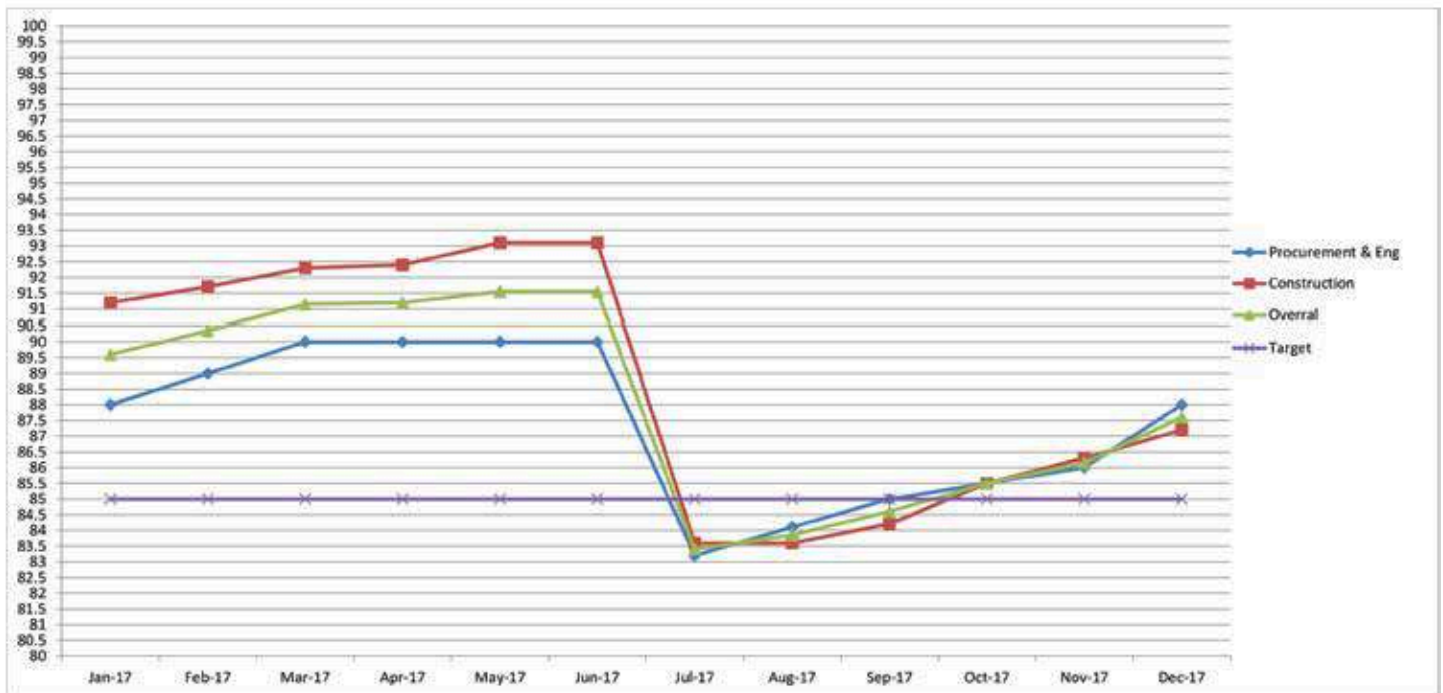
PROJECT QUALITY INDEX - PQI 2019



PROJECT QUALITY INDEX - PQI 2018



PROJECT QUALITY INDEX - PQI 2017



## OUR CLIENTS

أرامكو السعودية  
saudi aramco



نـمـر  
المياه الوطنية



الشركة السعودية للكهرباء  
Saudi Electricity Company

سابك  
SABIC



بترو رابغ  
Petro Rabigh

صدارة  
Sadara



Schlumberger



SAMSUNG ENGINEERING



سبكيم  
Sipchem

EXCELLENCE everywhere

KJO

عمليات الخفجي المشتركة  
AL KHAJJI JOINT OPERATIONS



amec  
foster  
wheeler

DAELIM



WorleyParsons  
resources & energy

HITACHI



FLUOR®



TECNICAS REUNIDAS

## OUR CLIENTS



## OUR CLIENTS



## OUR CLIENTS



رؤية  
VISION  
2030

المملكة العربية السعودية  
KINGDOM OF SAUDI ARABIA



## CONTACT US

 [info@ana-grp.com](mailto:info@ana-grp.com)

 +966558490607

 [www.ana-grp.com](http://www.ana-grp.com)