



COMAPNY PROFILE ANNA STAR



Email

info@ana-grp.com



Telephone

+966558490607



Website

www.ana-grp.com

Table Of Contents

01	Contractor's Technical Assessment	07-13
02	Company Profile	14-22
03	Our services	23-36
04	Our Products	37-59
05	Quality Production Certificate	60-61
06	Product Test Certificate	62-74
07	Structural Organizational Chart	75-76
08	Key Personal list	77-100

Table Of Contents

09	Commercial Documents	101-111
10	Insurance	112-113
11	Iso & Other Certificates	102-106
12	List of Equipments	107-120
13	Completed/Current Projects	121-157
14	Others (As Deemed Necessary)	158-163

CONTRACTOR'S TECHNICAL ASSESSMENT ON THE SUPPLIER/MANUFACTURER OR SUBCONTRACTOR

 **Email**

info@ana-grp.com

Telephone

+966558490607

 **Website**

www.ana-grp.com

TECHNICAL SPECIFICATIONS

Technical Specifications / LGS System

For buildings using LGS system, the specifications change as follows:
Walls and Roof: Composed of cold rolled galvanized high gauge steel section designed, detailed and roll formed in a CAM/CAD integrated system. Final finishing can be cement board, gypsum, aluminium siding, or as specified by the designer.

External and internal walls

All walls are sandwich panels with different external and internal finishes and rigid polyurethane foam insulation. We have the ability to use any kind of material for wall cladding from the inside or outside, including wood, steel sheet, Gypsum boards, cement boards, Masonite and decorative boards.

External Roofing

Composed of profiled, pre-painted white galvanized steel sheets, fixed on steel skeleton from the outside and designed according to loads, blanket thermal insulation 50mm is provided under the steel sheet.

Windows

Aluminium windows of standard sizes are used. All windows are fixed on a pre-painted steel sub frame.



Email

info@ana-grp.com

Telephone

+966558490607



Website

www.ana-grp.com

Doors

Sandwich panel construction using weatherproof galvanized pre-painted steel finish for the outside doors, and decorative boards for the inside doors.

Civil Works

Local mosaic of ceramic tiles finish fixed over a concrete slab 10cm thick on top of base course aggregate 15cm thick, or according to client's request.

Sanitary Works

Porcelain washbasins on steel brackets, with showers measuring 80x80cm and constructed from pre-painted steel. Toilets are fitted with cisterns and necessary hardware. All porcelain is white in color.

Electrical works:

Conducting: All conduits are flexible, PVC pipes inside sandwich panels and between roofs. Sockets: 13amp white plastic three pin sockets are provided. Sockets and Switchers are Vole type. Lighting: Consists of globe lights or local double batten standard fluorescent lights LED lighting can be used. Distribution Board: All boards are according to load. Earthling and earth leakage circuit breakers are optional.

Internal Ceiling:

Of white gypsum board 600x600mm fibre, supported on a pre-painted steel grid of T-sections. For portable units, ceilings can be comprised of sandwich panels or decorative boards, either of which are fixed on a wooden grid with insulation.



Email

info@ana-grp.com

Telephone

+966558490607

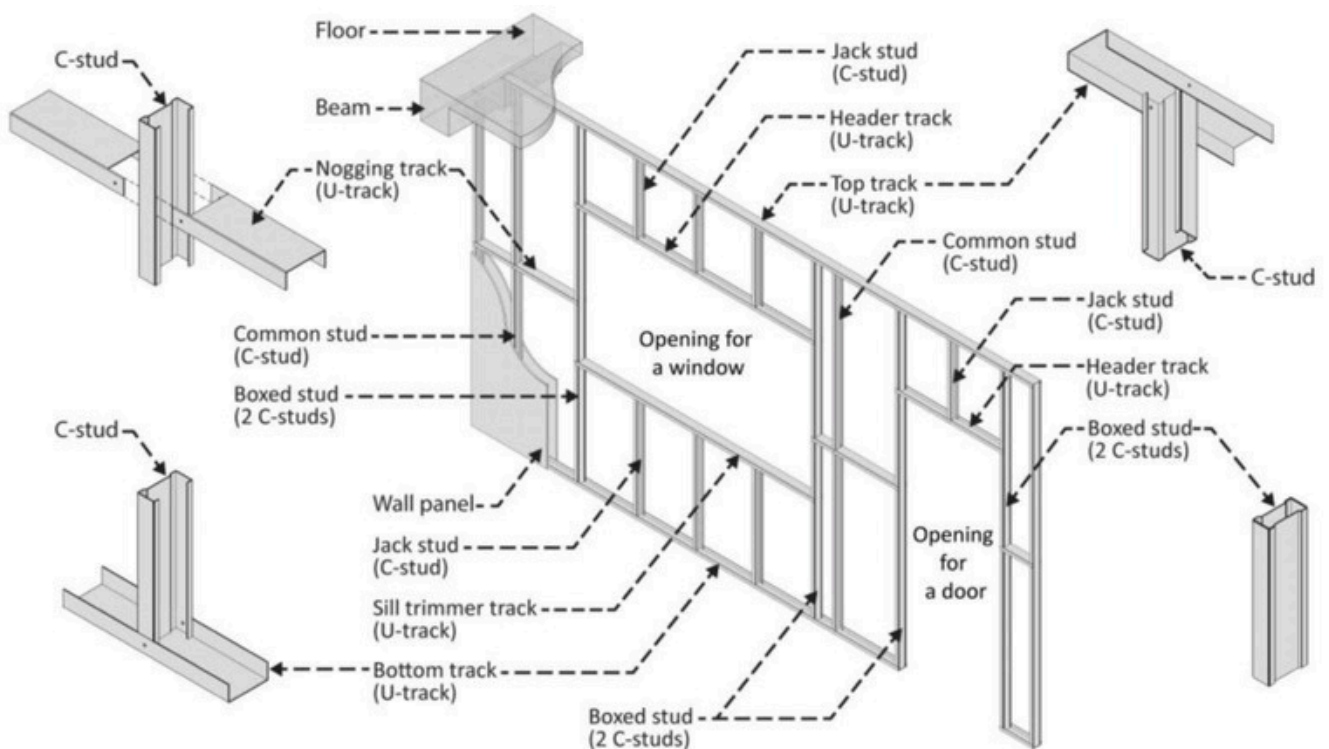


Website

www.ana-grp.com

Steel Chassee and Flooring

(For portable units only) PVC rolls or tiles are used for flooring on our portable units, which are laid on wooden boards that are fixed on galvanized, corrugated steel sheets for protection. The steel chassis can be of the portable type, the skid type or carried on axles and wheels (For portable units only).



Technical Details

Chassis and steel frame

- Main frame IPEAA 140 and cross beam IPEAA 140 for ground floor
- Main frame IPEAA 120 and cross beam IPEAA 120 for first floor
- Structural support columns IPEAA 140 fixed with flanges and bolts
- Floor deck tubs 40 x 40 x 1.25 mm with flanges and bolts
- Corner angles 7.5 x 7.5 cm for first floor
- Thru tubes 40 x 20 x 1.25 mm and purlin tubes 40 x 20 1.25 mm
- Red oxide metal primer coated and grey painted for steel exposed areas
- Flooring plywood board 18 mm covered with carpet for room and vinyl roll for wet areas

Wall and Roof

- External wall - (0.32 mm) - LP4 Sheet/sandwich panel/cement board
- Internal wall - (0.32 mm) - LP4 Sheet/sandwich panel/cement board - for bathroom and kitchen
- Internal wall decorative MDF 3 mm for rooms
- Armstrong false ceiling 60 x 60 cm gypsum tiles
- Wall insulation EPS polystyrene 40 mm and roof insulation PVC 25 mm
- Roof corrugated zinc 0.32 mm thick prepainted white
- Aluminum H for joints
- Internal wooden skirting for joints

Doors and Windows

- Doors aluminum frame with panel 90 x 200 cm for rooms and 70 x 200 cm for toilet
- Sliding window 80 x 80 aluminum with solar reflective single glass with insect net

Electrical

- Cable 1.5 mm for lights, 2.5 mm for outlet & 6 mm for A/C
- Double fluorescent light or LED round light 20 cm, sockets, light switch and A/C switch
- All electrical work connected to circuit breaker with MCB panel board
- External wall mounted fluorescent light fixed above main door
- Exhaust fans 25 x 25 cm one for each kitchen and toilet

Plumbing

- Western closets with flush and accessories
- Washbasin with tap, mirror and exhaust for ventilation
- Bottom kitchen cabinet with steel sink for kitchen
- Internal plumbing PVC pipes ¾" for water inline, 1 ½" for waste water and 4" for sewage connections

Stair case for first floor

- Main frame IPEAA 120
- Handrail tubes 40 x 40 x 1.25 mm and 40 x 20 x 1.25 mm
- Steps checker plate
- Red oxide metal Primer coated and grey painted for steel exposed areas



Email

info@ana-grp.com

Telephone

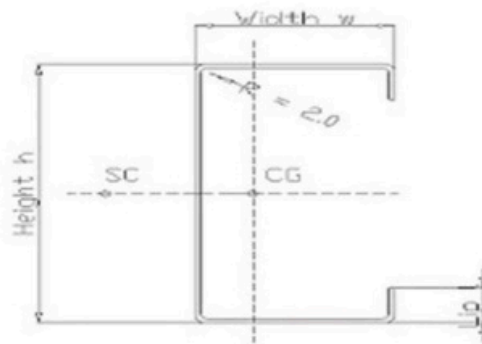
+966558490607



Website

www.ana-grp.com

Name		S8955	S8975	S8995	S8912	S8916
Grade		G550	G550	G550	G550	G350
Coating		AZ150	AZ150	AZ150	AZ150	AZ150
Yield Stress fy	MPa	410	495	500	500	350
Tensile Stress fu	MPa	410	495	520	520	420
Height h	mm	89	89	89	89	89
Width w	mm	41	41	41	41	41
Thickness t	mm	0.55	0.75	0.95	1.15	1.55
Lip l	mm	12	12	12	12	12
Feed	mm	189	188	187	186	184
Area	mm ²	103.89	140.94	177.60	213.88	285.26
Mass	Kg/m	0.816	1.106	1.394	1.679	2.239
Second Moment of Area Ix	mm ⁴	133599	180244	225869	270484	356720
Second Moment of Area Iy	mm ⁴	25300	33906	42203	50197	65291
Radius of Gyration rx	mm	35.86	35.76	35.66	35.56	35.36
Radius of Gyration ry	mm	15.61	15.51	15.42	15.32	15.13
Centroid Position x	mm	13.27	13.16	13.06	12.96	12.76
Centroid Position y	mm	44.23	44.13	44.03	43.93	43.73
Shear Centre xo	mm	33.40	33.18	32.95	32.73	32.28
Shear Centre yo	mm	0	0	0	0	0
Polar Radius of Gyration ro1	mm	51.61	51.38	51.15	50.91	50.45
Torsion constant	mm ⁴	10.48	26.43	53.43	94.28	228.44
Warping Constant Iw	mm ⁶	45533782	60738417	75251577	89091827	114826156
Section Modulus Zx	mm ³	3002	4050	5076	6078	8016
Section Modulus Zy	mm ³	921.34	1235	1537	1828	2377



COMPANY PROFILE (INFORMATION ON SUPPLIER/MANUFACTURER)

COMPANY PROFILE

 **Email**
info@ana-grp.com

Telephone
[+966558490607](tel:+966558490607)

 **Website**
www.ana-grp.com

OVERVIEW:

We are a ANNA STAR portable cabin company that offers various kinds of portable cabins, including washrooms, labor camps, office porta cabins, mess halls, residential houses, double-story buildings, security cabins, and other types of cabins. In addition, we fabricate portable fences, channeling fences, manual and automatic shades for car parking, bus parking, swimming pool shades, and other purposes. Our available tank types include fiberglass tanks, petroleum tanks, polyethylene tanks, stainless steel tanks, banded tanks, floating roof tanks, single-skin and double-skin tanks, water tanks, corrugated steel tanks, septic tanks, and oil tanks. We also have metal and concrete benches, concrete Jersey barriers, different types of tents, and furniture for all purposes.



Email

info@ana-grp.com

Telephone

+966558490607



Website

www.ana-grp.com

ABOUT US:

ANNA STAR

ANNA STAR is a leading contracting establishment and steel fabricator with over 10 years of experience working in different countries in the Gulf region. Our objective is to provide our clients with the best architectural metal works and structural steel services. We have fabrication units located in various Gulf countries, including the UAE, Bahrain, Egypt, Oman, and Saudi Arabia.



✉ **Email**
info@ana-grp.com

☎ **Telephone**
+966558490607

🌐 **Website**
www.ana-grp.com

OUR MISSION:

Our mission is to anticipate, meet and exceed customer needs and develop best relations with clients and catch-up the market by providing integrated solutions by using modern approaches, innovative technologies and best engineering tools (selected from all over world) Indeed our aim is to serve the best to the client and work effectively to reduce the human and financial costs of our valuable clients. We will strive without reserve for the greatest possible reliability.



MANPOWER RESOURCES:



50+

Staff



500+

**Skilled + unskilled
Labor**



550+

**Total Work
Force**

✉ **Email**
info@ana-grp.com

☎ **Telephone**
[+966558490607](tel:+966558490607)

🌐 **Website**
www.ana-grp.com

FINANCIAL PARTNERS



PRODUCTION FACILITIES:

ANNA STAR boasts state-of-the-art production facilities spanning over 450,000 square feet across 15 strategic locations in Gulf countries. With a focus on manufacturing Light Gauge Steel Cabins, our expansive facilities enable us to meet the growing demand for efficient and sustainable modular construction solutions. Our robust infrastructure ensures the highest standards of quality, precision, and timely delivery for our valued clients.

450,000+

Factory Area
Sq Ft

15+

Different Location
of Gulf



Email

info@ana-grp.com

Telephone

+966558490607



Website

www.ana-grp.com

MACHINERY LIST

MACHINE NAME	NOS
AIR COMPRESSOR 10/FINI EC TRONOC II	1
PLANER MACHINE	6
MORTIZER MACHINE-LOCK HOLE	1
BLADE SHARPENING MACHINE	2
SPINDLE MOULDER	1
BAND SAW MACHINE	2
THICKNESSOR MACHINE	5
GROOVING MACHINE	1
DUST VACUM MACHINE	1
DUST REMOVER	3
ALUMINIUM CUTTING MACHINE	1
AIR COMPRESSOR 100 Lt	2
AIR COPMPRESSOR 150 Lt	1
AIR COPMPRESSOR 200 Lt	1
HOT PRESSING MACHINE	1
BORING MACHINE FOR HINGES	1
BORING MACHINE FOR FITTINGS	1
ROLL FORMING MACHINE.G.I.STUD	1
AIR COMPRESSOR 300 Lt	2
AIR COMPRESSOR 500 Lt	2
AIR COPMPRESSOR 1000 Lt	1

MACHINE NAME	NOS
ALUMINIUM CUTTING MACHINE	2
DRILLING MACHINE (Stand Alone)	1
DRILLING MACHINE (Stand Alone)	6
MILLING MACHINE	2
WELDING MACHINE	28
DISC CUTTING MACHINE - STEEL	4
DISC CUTTING MACHINE SMALL	2
DRILLING MACHIN - 12 SPEED	1
GELYCOAT MIXER	1
PUTY MIXER	5
TABLE SAW	2
POWER SPRAY MACHINE (GRC)	6
COLOR MIXER	1
HIGH PRESSUR WAHSER	1
DIESEL PUMP	1
WOOD CUTTING MACHINE	9
EDGE BANDING MACHINE	1
PLASMA MACHINE	1
POWER PRESS	3
SHEARING MACHINE	1
STAY DRILLER	1

IDENTIFY SCOPE OF WORK / SERVICES TO BE PROVIDED

OUR SERVICES

 **Email**

info@ana-grp.com

Telephone

+966558490607

 **Website**

www.ana-grp.com



LGS PORTA CABINS

FOLDING CONTAINER PRODUCTION



✉ **Email**
info@ana-grp.com

☎ **Telephone**
+966558490607

🌐 **Website**
www.ana-grp.com



FABRICATION WORKS

FINISHING AND FURNISHING WORKS



✉ **Email**
info@ana-grp.com

☎ **Telephone**
+966558490607

🌐 **Website**
www.ana-grp.com



INSTALL DOORS AND WINDOWS

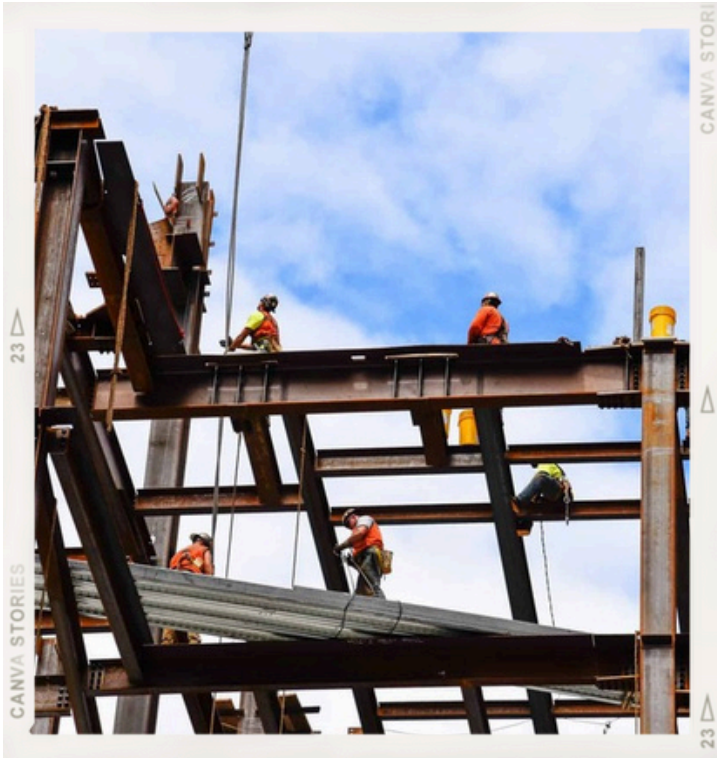
ELECTRICAL WORKS



✉ Email
info@ana-grp.com

☎ Telephone
+966558490607

🌐 Website
www.ana-grp.com



STEEL STRUCTURE WORK

PLUMBING WORK



✉ Email
info@ana-grp.com

☎ Telephone
+966558490607

🌐 Website
www.ana-grp.com

LGS FACTORY



✉ **Email**
info@ana-grp.com

☎ **Telephone**
+966558490607

🌐 **Website**
www.ana-grp.com

Residential



Labor Accommodation



Multi Storied Building



Ware Houses



Porta Cabins



Low Cost Houses



✉ Email

info@ana-grp.com

☎ Telephone

+966558490607

🌐 Website

www.ana-grp.com

RESIDENTIAL

Villas, Residential buildings, Flats, Modern homes etc..



INDUSTRIAL

Factories, laboratories, offices, rest stops, warehouses, bus stations, constructions companies, covered storage for industrial waste and do-it-yourself retail locations.



✉ **Email**
info@ana-grp.com

☎ **Telephone**
+966558490607

🌐 **Website**
www.ana-grp.com

COMMERCIAL/RETAIL

equestrian, equipment leasing companies, livestock and breeding, maintenance facilities, market places/bazaars, museums, residential common areas, self-storage facilities, stores/storefronts, gas stations, telecommunication infrastructure coverage, vehicle dealerships and warehouses.



PUBLIC WORKS

Administrative buildings, dormitories, guardrails, machine shops, pumping stations and other containment facilities.



✉ **Email**
info@ana-grp.com

☎ **Telephone**
+966558490607

🌐 **Website**
www.ana-grp.com

INSTITUTIONAL

Airport facilities: maintenance facilities, baggage handling and storage, personnel processing, churches, day care centres, drug treatment facilities, elder care communities, medical centres/hospitals, meeting halls, prisons, reception, rest stops, gymnasiums, roadside storage, schools and tunnel lining.



HUMANITARIAN AID

Clinics, disaster relief: shelters (processing, relief supplies, personnel and food distribution), storage, operational headquarters, reconstructive efforts; food distribution locales, dining and sanitary facilities, maintenance and communication hubs, homeless shelters, low-income housing and base camp facilities.



OUR PRODUCTS

- LGS SYSTEM PORTA CABINS
- CONTAINERS
- SANDWICH PANELS
- PORTABLE OFFICES
- PORTA CABINS
- WAREHOUSES
- SECURITY CABINS
- MOSQUES
- SHOWER & TOILES UNITS
- FIBER HOUSES
- RACKS
- WATER TANKS
- DOUBLE STORY BUILDINGS RACKS
- WATER TANKS
- SEPTIC TANKS
- OIL TANKS
- METAL DOORS
- SHADES
- HANGERS
-
-



Email

info@ana-grp.com

Telephone

+966558490607



Website

www.ana-grp.com

ANNA STAR CONTAINERS:

ANNA STAR is providing top-quality portable containers that are versatile, durable, and cost-effective solutions for a variety of needs. Their modular structures can be customized for various applications, including storage, office spaces, living spaces, and more, offering flexibility and convenience in a compact package. With ANNA STAR's expertise and commitment to quality, you can trust that their portable containers will meet your needs and exceed your expectations.



✉ **Email**
info@ana-grp.com

☎ **Telephone**
+966558490607

🌐 **Website**
www.ana-grp.com

ANNA STAR SANDWICH PANEL:

ANNA STAR offers portable sandwich panels that are a smart solution for fast and easy construction of modular structures. These panels consist of an insulating foam core, sandwiched between two steel panels, providing excellent thermal and sound insulation. They are lightweight, easy to handle, and can be assembled quickly, making them ideal for various applications, including portable containers, prefab homes, and temporary structures.



✉ **Email**
info@ana-grp.com

☎ **Telephone**
+966558490607

🌐 **Website**
www.ana-grp.com

ANNA STAR OFFICE:

ANNA STAR's portable offices are an excellent solution for businesses looking to expand their workspace quickly and cost-effectively. These modular structures are designed to provide a comfortable and efficient office space in any location. With customizable options, such as insulation, air conditioning, and electrical outlets, ANNA STAR 's portable offices can be tailored to meet your specific needs.



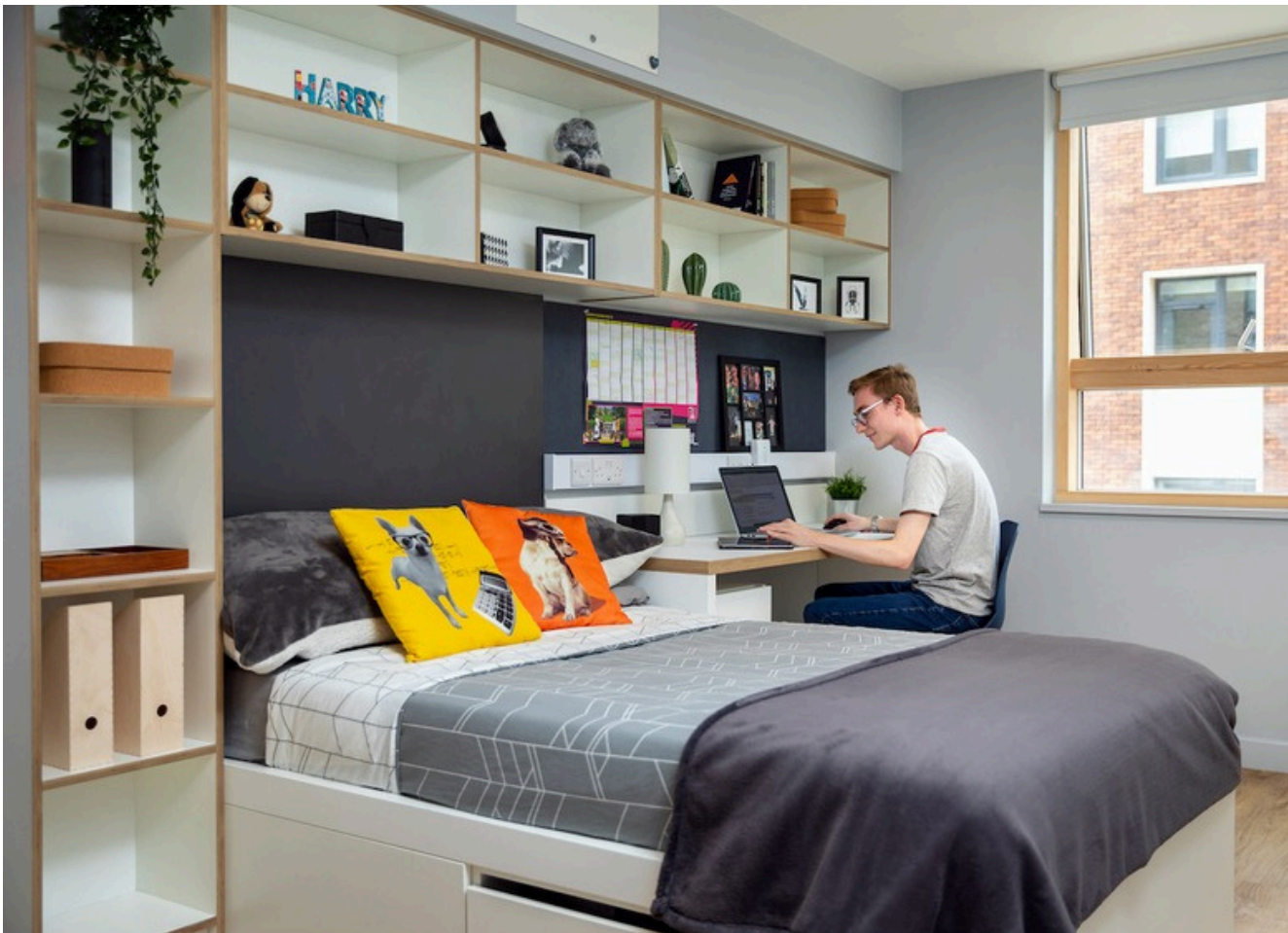
✉ **Email**
info@ana-grp.com

☎ **Telephone**
+966558490607

🌐 **Website**
www.ana-grp.com

LIVING ACCOMMODATION

ANNA STAR's living accommodations offer a comfortable and convenient living space for a variety of needs. These modular structures are designed to provide a functional and stylish living area in any location, with customizable options such as insulation, heating, air conditioning, and plumbing. Whether you need temporary housing for a construction site, an extra guest room, or a mobile home, ANNA STAR's living accommodations can be tailored to meet your unique requirements.



✉ **Email**
info@ana-grp.com

☎ **Telephone**
+966558490607

🌐 **Website**
www.ana-grp.com

ANNA STAR TOILETS

ANNA STAR's portable toilets offer a hygienic and convenient solution for events, job sites, and other temporary locations. These modular structures are designed to provide a clean and comfortable restroom experience with customizable options such as flushing toilets, sinks, and hand dryers.



✉ **Email**
info@ana-grp.com

☎ **Telephone**
+966558490607

🌐 **Website**
www.ana-grp.com

ANNA STAR TENTS

ANNA STAR's portable tents are an ideal solution for outdoor events, festivals, and other temporary structures. These modular structures are designed to provide a quick and easy setup with customizable options such as size, shape, and color.



✉ **Email**
info@ana-grp.com

☎ **Telephone**
+966558490607

🌐 **Website**
www.ana-grp.com

ANNA STAR PORTABLE CABINS

ANNA STAR's portable cabins provide a versatile and comfortable living space for a variety of needs. These modular structures are designed to offer a convenient and functional living area with customizable options such as insulation, heating, air conditioning, and plumbing.



✉ **Email**
info@ana-grp.com

☎ **Telephone**
+966558490607

🌐 **Website**
www.ana-grp.com

PORTABLE WAREHOUSE:

ANNA STA's portable warehouses offer a flexible and cost-effective solution for your storage needs. These modular structures are designed to provide a secure and weather-resistant storage space with customizable options such as size, layout, and accessories. Whether you need temporary or long-term storage, ANNA STAR's portable warehouses can be tailored to meet your specific requirements.



✉ **Email**
info@ana-grp.com

☎ **Telephone**
+966558490607

🌐 **Website**
www.ana-grp.com

PORTABLE SECURITY CABINS

ANNA STAR's portable security cabins offer a versatile and secure solution for a variety of security needs. These modular structures are designed to provide a functional and durable space with customizable options such as size, layout, and security features. Whether you need a temporary or permanent security checkpoint, ANNA STAR's portable security cabins can be tailored to meet your specific requirements.



Email

info@ana-grp.com

Telephone

+966558490607



Website

www.ana-grp.com

PORTABLE MOSQUES

ANNA STAR's portable mosques offer a convenient and versatile solution for temporary or mobile religious spaces. These modular structures are designed to provide a comfortable and functional prayer area with customizable options such as size, layout, and features. Whether you need a temporary mosque for an event or a mobile prayer space for a community, ANNA STAR's portable mosques can be tailored to meet your specific requirements.



✉ **Email**
info@ana-grp.com

☎ **Telephone**
+966558490607

🌐 **Website**
www.ana-grp.com

PORTABLE SHOWER UNITS

ANNA STAR's portable shower and toilet units offer a practical and efficient solution for outdoor events, construction sites, and disaster relief efforts. These modular units are designed to provide a hygienic and comfortable environment with customizable options such as size, layout, and features. Whether you need temporary sanitation facilities for a music festival or a mobile bathroom and shower unit for a construction site, ANNA STAR's portable shower and toilet units can be tailored to meet your specific requirements.



✉ **Email**
info@ana-grp.com

☎ **Telephone**
+966558490607

🌐 **Website**
www.ana-grp.com

PORTABLE FIBER HOUSES

ANNA STAR's portable fiber houses are an innovative and eco-friendly solution for those seeking a quick and affordable housing option. These modular homes are constructed from lightweight and durable fiber materials, making them easy to transport and assemble. With customizable designs and layouts, ANNA STAR's portable fiber houses offer a comfortable and sustainable living space for a variety of applications.



Email

info@ana-grp.com

Telephone

+966558490607



Website

www.ana-grp.com

PORTABLE RACKS

ANNA STAR's portable racks are a versatile and convenient storage solution for a variety of industries. These modular racks can be easily transported and assembled, making them ideal for use in temporary or remote locations. With customizable sizes and configurations, ANNA STAR's portable racks provide a practical and efficient storage solution for any business.



Email

info@ana-grp.com

Telephone

+966558490607



Website

www.ana-grp.com

PORTABLE WATER TANKS

ANNA STAR's portable water tanks are a durable and reliable solution for water storage needs. These tanks are made from high-quality materials and are designed to be easily transported and set up in remote or temporary locations. With customizable sizes and capacities, ANNA STAR's portable water tanks are an essential resource for any business or organization.



✉ **Email**
info@ana-grp.com

☎ **Telephone**
+966558490607

🌐 **Website**
www.ana-grp.com

PREFAB DOUBLE STORY BUILDINGS

ANNA STAR provides portable double-story buildings that offer the convenience of a traditional building without the permanency. These buildings are ideal for temporary and permanent use, providing ample space for offices, homes, and other purposes.



✉ **Email**
info@ana-grp.com

☎ **Telephone**
+966558490607

🌐 **Website**
www.ana-grp.com

PORTABLE SEPTIC TANKS

ANNA STAR offers portable septic tanks that are designed for temporary or permanent use in locations without access to a traditional sewage system. These tanks are durable, easy to install and maintain, and come in a variety of sizes to meet the needs of different settings.



PORTABLE OIL TANKS

ANNA STAR offers the service of portable oil tanks, ideal for various applications including construction sites, mining, and transportation. These tanks are made of high-quality materials, ensuring durability and safety for the storage of oil and other liquids.



✉ **Email**
info@ana-grp.com

☎ **Telephone**
+966558490607

🌐 **Website**
www.ana-grp.com

METAL DOORS

ANNA STAR offers portable metal doors that are durable and reliable. These doors are designed to be easily installed and moved, making them ideal for temporary or permanent use in a variety of settings.



✉ Email
info@ana-grp.com

☎ Telephone
+966558490607

🌐 Website
www.ana-grp.com

SHADES

ANNA STAR offers high-quality and durable portable shades that provide excellent protection from the sun and other weather elements. These shades are easy to assemble and disassemble, making them perfect for outdoor events, picnics, and camping trips.



✉ **Email**
info@ana-grp.com

☎ **Telephone**
+966558490607

🌐 **Website**
www.ana-grp.com

ISO OR OTHER QUALITY CERTIFICATIONS (9001, 14001, 45001)

 **Email**
info@ana-grp.com

Telephone
[+966558490607](tel:+966558490607)

 **Website**
www.ana-grp.com

Certificate



Certificate of Compliance

This is to certify that management system of

ANNA-STAR CONTRACTING COMPANY

Postal code 12836, Building number 3454, Uwaidah street, Al-Malaz Dist. Riyadh city kingdom Of Saudi Arabia.

follows proper Quality Management System according to
ISO 9001:2015 to maintain manufacture and sales of
Anna Star Contracting Company
and timely take all necessary step to achieve QMS's
measures for the purpose of Construction and Contracting Company.

Date of Registration	: 27 sep 2024
1st Surveillance Due	: 26 sep 2025
2nd Surveillance Due	: 26 sep 2026
Certificate Expiry (subject to the company maintaining its system to the required standard)	: 26 sep 2027

Certificate# 502147894

To Verify Certificate Contact through info@quality-veritas.com



Jamil
Authorised Signatory

Quality Veritas Limited

Validity of this certificate is subject to annual surveillance audits done successfully

www.quality-veritas.com info@quality-veritas.com

Address: 9th Bankwell Street Manchester M15 5LN

Certification



Certificate of Compliance

This is to certify that the Environment Management System of

ANNA-STAR CONTRACTING COMPANY

Postal code 12836, Building number 3454, Uwaidah street, Al-Malaz Dist. Riyadh city kingdom Of Saudi Arabia.

Has been independently assessed and is compliant
with the requirements of

ISO 45001:2018

Occupational health and Safety Management System

This certificate is applicable to the following product of services ranges

Construction and Contracting

Certificate NO: AE 100000567/03/H

Dots of this cortificate 03 April 2024 Date of initial Registration 03 April 2025

Date of Certificate Expiry 02 April 2026 Re-Certification Due 02 April 2027

This certificate is the property of Anna Star Contracting Company certification and remains valid Subject to satisfactory surveillance audits.

Director



Certificate



Certificate of Compliance

This is to certify that management system of

ANNA-STAR CONTRACTING COMPANY

Postal code 12836, Building number 3454, Uwaidah street, Al-Malaz Dist. Riyadh city kingdom Of Saudi Arabia.

follows proper management system according to
ISO 14001: 2015 to maintain health and safety systems and timely take all necessary steps to access and maintain health and safety measures among their working staffs and labour.

Date of Registration	: 27 sep 2024
1st Surveillance Due	: 26 sep 2025
2nd Surveillance Due	: 26 sep 2026
Certificate Expiry (subject to the company maintaining its system to the required standard)	: 26 sep 2027

Certificate# 503167874

To Verify Certificate Contact through info@quality-veritas.com



Janil
Authorised Signatory

Quality Veritas Limited

Validity of this certificate is subject to annual surveillance audits done successfully

www.quality-veritas.com info@quality-veritas.com

Address: 9th Bankwell Street Manchester M15 5LN

CERTIFICATE OF CONFORMITY, PRODUCT TEST CERTIFICATES

 **Email**
info@ana-grp.com

Telephone
[+966558490607](tel:+966558490607)

 **Website**
www.ana-grp.com



BUREAU VERITAS
**Conformity Certificate for the Goods exported to
The Kingdom of Saudi Arabia**

CC No : 2021 000821 001

Date : 22/4/2021

We, Bureau Veritas, testify that the description of the goods stated below according to the referenced invoice and which is exported from the country shown below, have been subjected to laboratory tests and proven to be in compliance with the approved standards in Kingdom of Saudi Arabia.

Page 1 of 1

Name and address of manufacturer ZHONGSHAN ZHENGDE COMMERCIAL CO., LTD. F1, NO. 33, MIDDLE INDUSTRY AVENUE, TAIFENG INDUSTRIAL ZONE, XIAOLAN TOWN, ZHONGSHAN CITY, GUANGDONG CHINA		Name and address of exporter ZHONGSHAN ZHENGDE COMMERCIAL CO., LTD. F1, NO. 33, MIDDLE INDUSTRY AVENUE, TAIFENG INDUSTRIAL ZONE, XIAOLAN TOWN, ZHONGSHAN CITY, GUANGDONG CHINA Phone:	
Name and address of importer Pro-Frgw Jeddah, Saudi Arabia		Invoice No and date 0090120 20/01/2009 L/C number : L/C issuer : NOT APPLICABLE	
Port of loading : XIAOLAN		Port of arrival : RIYADH VIA DAMMAM	
Means of shipment : SEA Containers Seals		Country of Origin : CHINA (PEOPLE REP.)	
Remarks : PLUGS NOT ACCORDING TO SASO STANDARDS			

ITEM NAME AND DESCRIPTION	PACKAGING	QUANTITY	ITEM No
RANGE HOOD, , ELECTRIC, AG-RH51	CARTON	933.00 PCS	0001

Issued by Bureau Veritas Group: Greater China

Name : Wofay Ni

Official stamp:



Date : 4/22/2009

Signature :

0328059



Email

info@ana-grp.com

Telephone

+966558490607



Website

www.ana-grp.com

FINAL REPORT

REACTION TO FIRE TEST

TEST SPONSOR:
United Mining Industries

TESTED MATERIAL/ASSEMBLY:
Fiber Cement Board

TEST STANDARD:
ASTM E84-15b: Standard Test Method for Surface Burning Characteristics of Building Materials





**THOMAS BELL-WRIGHT
INTERNATIONAL CONSULTANTS**

Test Report Ref. No. PL048

Accreditation

Testing

ISO/IEC 17025: General requirements for the competence of testing and calibrating laboratories *with*

1. United Kingdom Accreditation Service(UKAS) - Testing Laboratory : **4439**
2. International Accreditation Service (IAS) - Testing Laboratory : **TL-626**
3. GCC Accreditation Center (GAC) – Testing Laboratory :**ATL-0017**
www.ukas.comwww.iasonline.orgwww.GCC-accreditation.org



Memberships

Members of European Group of Organization for Fire Testing, Inspection and Certification

www.egolf.org.uk

Member of International Trade Council

www.thetradecouncil.com

Member of Association for Specialist Fire Protection

www.asfp.org.uk

Member of Centre for Window and Cladding Technology

www.cwct.co.uk



The work which is the subject of this report falls wholly or partly under the accreditation marked below:

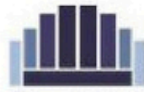
- | | |
|---------------------|-------------------------------------|
| ISO 17025 UKAS | <input checked="" type="checkbox"/> |
| ISO 17025 IAS | <input type="checkbox"/> |
| ISO 17025 GAC | <input checked="" type="checkbox"/> |
| Non-accredited test | <input type="checkbox"/> |





Table of Contents

1. INTRODUCTION.....	4
2. SPONSOR.....	4
3. TESTING LABORATORY.....	4
4. DATE OF TEST.....	4
5. SPECIMEN DESCRIPTION.....	4
6. METHOD OF TEST.....	5
6.1. Placing of test specimen.....	5
6.2. Test Method.....	5
6.3. Conditioning.....	5
7. OBSERVATION.....	5
8. SUMMARY OF RESULTS.....	6
9. CLASSIFICATIONS.....	6
10. LIMITATIONS.....	7
11. APPENDIX 1- GRAPHS.....	8
12. APPENDIX 1- PICTURES.....	9



1. INTRODUCTION

Determination of the flame spread index and the smoke developed index of Fiber Cement Board as per ASTM E84; Standard Test Method for Surface Burning Characteristics of Building Materials.

2. SPONSOR

United Mining Industries

P.O. Box: 31491

Light Industrial City, Yanbu Al-Sinaiyah, 51000 KSA

T: +966 4 396 8777, F: +966 4 396 2666

Website: www.ugc.com.sa

3. TESTING LABORATORY

Thomas Bell-Wright International Consultants

25b Street Ras Al Khor Industrial Area

P.O. Box 26385

Dubai, U.A.E.

4. DATE OF TEST

Sample received: 25-Feb-16

Test date: 28-Feb-16

The test has been witnessed by:

Name	Company	Contact Number
Ahmed Badawy	United Mining Industries	059 078 8829

5. SPECIMEN DESCRIPTION

Product Tested	Fiber Cement Board
Fire side	Smooth surface of cement board
Product Description	12mm thick Fiber Cement Board
Dimensions per panel	2400 x 600 x 12mm (l x w x thk) (measured)
No. of panel	3
Total dimension	7200 x 600 x 12mm (l x w x thk) (measured)
Specimen placement	3 sections of Fiber Cement Board were butt jointed end-to-end. The test specimen was placed directly to the tunnel ledges with the smooth surface towards the flame source.

The test specimen was submitted by the client and TBWIC has not been involved in the selection and configuration of the specimen.



6. METHOD OF TEST

6.1. Placing of test specimen

The test specimen consisted of 3 sections of Fiber Cement Board. The total dimensions of the specimen were 7200 x 600 x 12mm (l x w x thk).

Several sections of cement board butt jointed end-to-end with overall dimensions of 7350 x 600 mm (l x w), were placed at the back of the sample to protect the furnace lid assembly.

6.2. Test Method

The specimen was installed horizontally in the Steiner Tunnel and supported by the ledges. The smooth surface of Fiber Cement Board (fire side) was exposed to a flaming exposure during the 10 minute test duration.

Flame spread and density of the smoke are measured and recorded while the results are computed against the standard calibration materials (cement board and red oak flooring).

6.3. Conditioning

After delivery on 25-Feb-16, the specimen was stored in room temperature for 3 days prior to the test at 20.2 to 25.8°C and 45 to 55% relative humidity.

7. OBSERVATION

Test Data and Observation

Observations	
Ignition Time (min:sec)	None
Time to maximum flame front advance (min:sec)	None
Maximum flame spread (ft)	None
Time to end of tunnel reached (min:sec)	Not Reached
Maximum temp recorded at the exposed thermocouple located near the end of the tunnel (°F / °C)	548/287
Dripping (min:sec)	None
Flaming on the floor (min:sec)	None
After flame on the top (min:sec)	None
After flame on the floor (min:sec)	None
Delamination (min:sec)	None
Sagging (min:sec)	None
Shrinkage (min:sec)	None
Fallout (min:sec)	None
FS*Time Area (ft*min)	0
Smoke Area (%A*min)	8.79
Red Oak Smoke Area (%A*min)	88.1



8. SUMMARY OF RESULTS

The test specimen has been evaluated in accordance with ASTM E84; Standard Test Method for Surface Burning Characteristics of Building Materials.

The test results are:

FLAME SPREAD INDEX (FSI)	0
SMOKE DEVELOPED INDEX (SDI)	10

Results are valid for the tested configuration only.

9. CLASSIFICATIONS

The following information is designed to help put these test results into context. Flame Spread Index and Smoke Developed Index results from an ASTM E84 test are often used by regulatory agencies to approve materials for various applications. For example, the International Building Code 2012, Section 803.1.1 requires that:

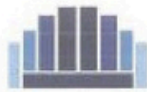
Interior wall and ceiling finish materials shall be classified in accordance with ASTM E84 or UL 723-10th Ed. 2008. Such interior finish materials shall be grouped in the following classes in accordance with their flame spread and smoke-developed indexes.

Class A: Flame spread index 0 - 25; smoke-developed index 0 - 450.

Class B: Flame spread index 26 - 75; smoke-developed index 0 - 450.

Class C: Flame spread index 76 - 200; smoke-developed index 0 - 450.

Note that the above example is the IBC requirement for interior wall and ceiling finishes only; your application may be different.



10. LIMITATIONS

Testing of materials that melt, drip, or delaminate to such a degree that the continuity of the flame front is destroyed, results in low flame spread indices that do not relate directly to indices obtained by the testing materials that remain in place

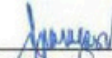
Thomas Bell-Wright International Consultants recommend that the relevance of test reports should be considered after a period of five years.

This test report is respectfully submitted by: Thomas Bell-Wright International Consultants

Prepared By:


Romano Parungao
Fire Testing Engineer

Reviewed By:


Fredlyn Paragoso
Fire Testing Engineer

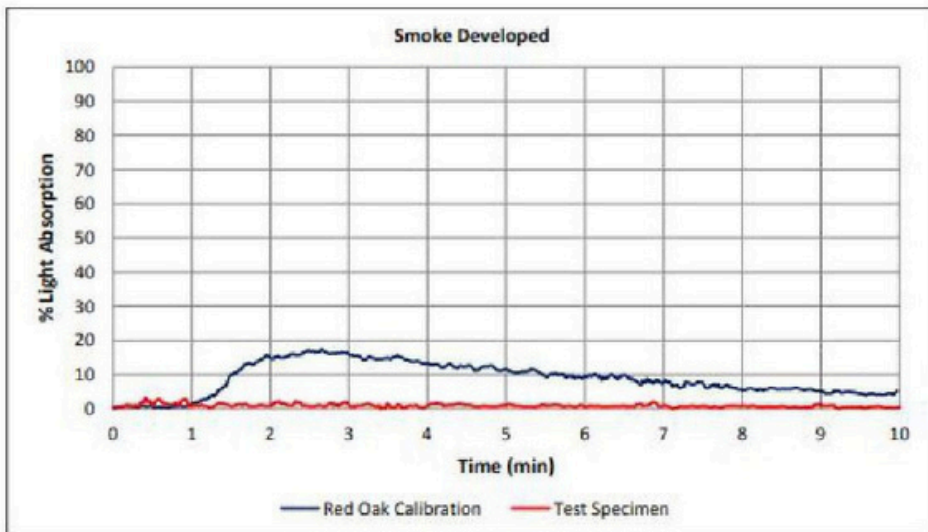
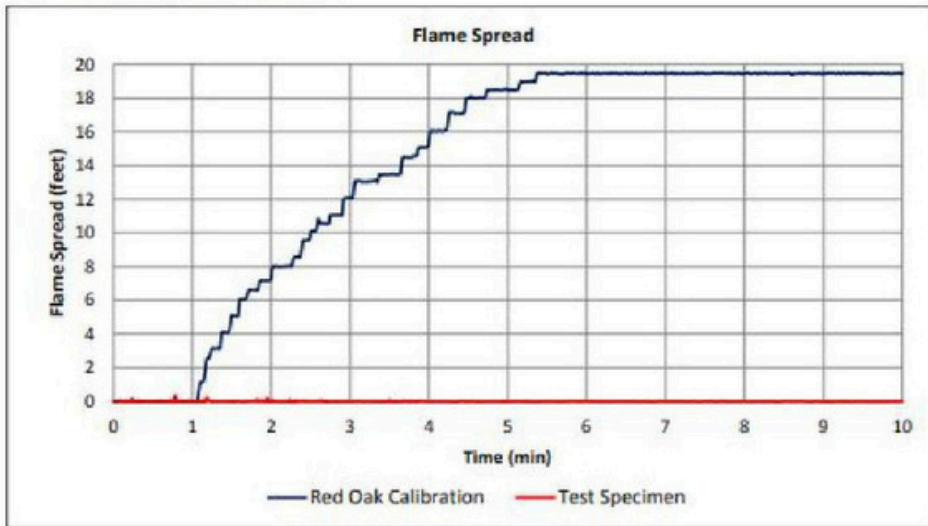
Approved By:


David Campbell, GFireE
Regional Director of Fire Compliance





11. APPENDIX 1- GRAPHS





12. APPENDIX 1- PICTURES

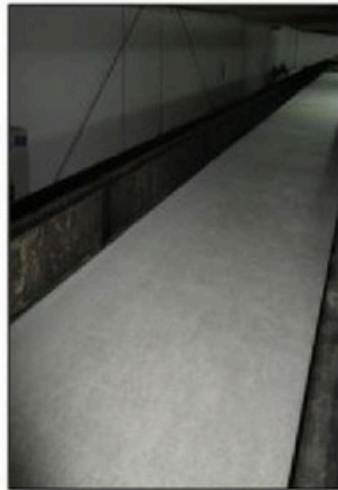


Photo 1: Specimen before the test
(Non-fire side)



Photo 2: Specimen before the test
(Fire side)

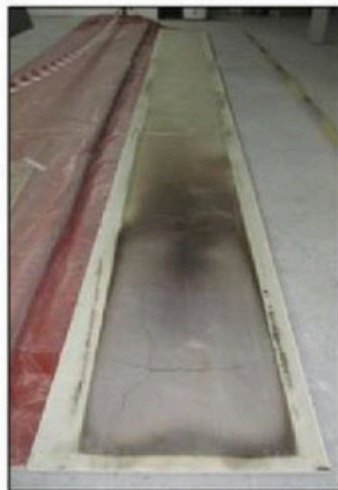


Photo 3: Specimen after the test
(located near the fire end)

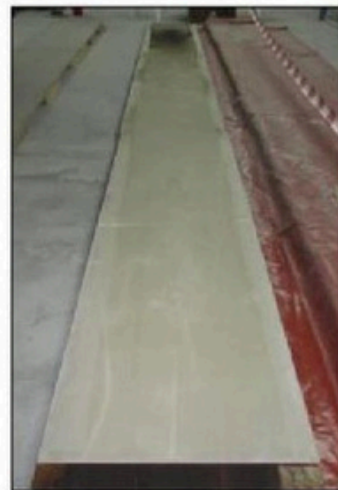


Photo 4: Specimen after the test
(located near the exhaust end)



المصنع السعودي لأبواب المصاعد Saudi Factory For Elevators Doors

المحترمين

السادة / شركات ومؤسسات السلامة والمقاولات

السلام عليكم ورحمة الله وبركاته ،،،،،، ويعد

نتشرف بالتوضيح لسيادتكم بمواصفات باب الطوارئ الوطني الخاص بمصنعنا .

وعليه نفيديكم بالآتي .

الوصف	المنتج	م
باب طوارئ وطني الصنع	صناعة المنتج	1
سمك الصاج : 1.5 ملى صاج مجلفن G90 العرض : 98 سم الارتفاع : 210 سم السّمك : 10 سم / 20 سم	الحلق	2
سمك الصاج : 1 ملى صاج مجلفن G90 العرض : 87 سم الارتفاع : 203 سم السّمك : 4.5 سم	ضلفة الباب	3
الصوف الصخري (ROCK WOOL)	العازل	4
يتحمل الباب مقاومة الحريق 90 / 60 دقيقة	المقاومة ضد الحريق	5
يتم دهان الباب بأنظمة الطلاء الالكترو استاتيكية	الدهان	6
اللون أخضر فاتح محبب مقاوم للصدأ	اللون	7
الدفاش كاللون الرداد صيني مواصفات (UL)	الإكسسوارات	8
الدفاش استل ستيل مقاوم الحريق مواصفات أمريكية (UL) كالون استل ستيل	إكسسوارات خاصة حسب الطلب	9
الضمان لمدة سنتان ضد عيوب التصنيع	الضمان	10

TECHNICAL DATD FOR FIRE DOOR & FRAME

- 1) Frame : GI Grade G90 Sheet Frame Thickness – 1.5 & 2 mm .
- 2) Door Leaf : GI Grade G90 & G115 Sheet .Leaf Thickness – 1 &1.2 mm.
- 3) Door Insulation : Mineral Rock Wool .
- 4) Fire Rated : UP TO 120 Min .
- 5) Painted : Electrostatic Powder Coating Finish Painted

Kingdom of Saudi Arabia
Makkah, Al-Nwarih

المملكة العربية السعودية
مكة المكرمة - النوارية



Email

info@ana-grp.com

Telephone

+966558490607



Website

www.ana-grp.com



المتحدة للصناعات المعدنية
United Mining Industries

to whom it may concern

test report

Product : FCB UNICEM 18×1200×2400 MM

TEST RESULTS

S.NO	PARAMETER	UNIT	RESULT	SPECIFICATION
1	Length Tolerance	mm	2397	± 6.0
2	Width Tolerance	mm	1198	± 6.0
3	Squareness	mm/m	1.1	≤ 2.6
4	Thickness	mm	17.7	± 1.5
5	Flexural strength at equilibrium conditions	Mpa	12.1	≥ 10.0
6	Flexural strength at wet conditions	Mpa	8.1	≥ 7.0
7	Moisture Content by weight	%	9.1	NA
8	Water Absortion by weight(48 Hours)	%	31	≤ 34 %
9	Density	kg/m ³	1332	≥ 1300Kg/m ³
10	Water Tightness		Satisfactory	NA

* the sample passes the test .

*the tests are done according to ASTM C 1185-08(2012) and results are accepted according to ASTM C1186-08(2012)type A grade I .

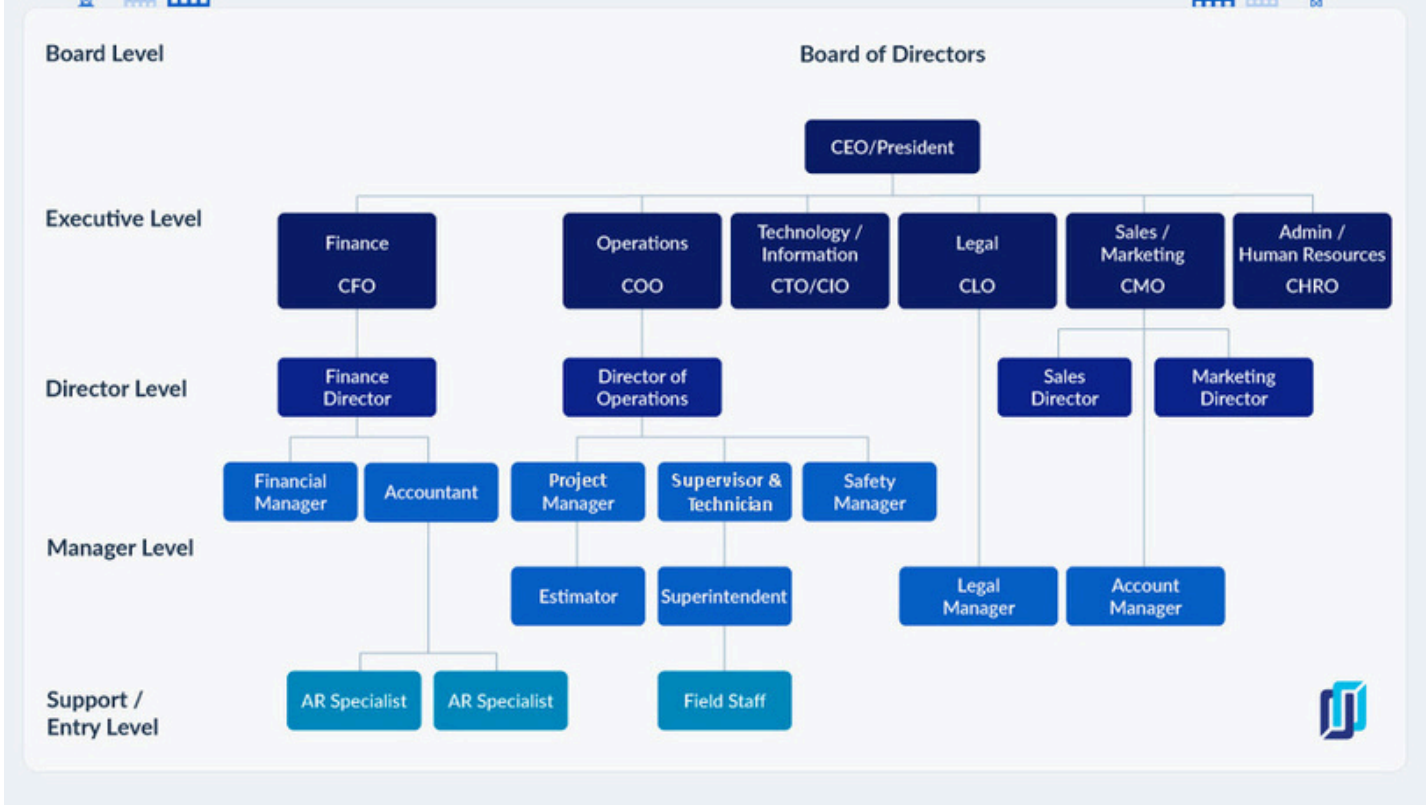
ENG/Ahmed Abd El Hameed Gharbia

QA/QC SupserVisor



STRUCTURAL ORGANIZATIONAL CHART

Organizational Chart for Large Construction Company



COMMERCIAL DOCUMENTS/GOVERNMENT REGISTRATIONS

COMPANY REGISTRATION / TRADE LICENSE

✉ **Email**
info@ana-grp.com

☎ **Telephone**
[+966558490607](tel:+966558490607)

🌐 **Website**
www.ana-grp.com

الرقم الموحد : ٧٠٣٨٥٧١١٥٩
رقم المنشأة : ١٠٠٩٩٢٣٥٧
التاريخ : ١٤٤٥/٠٨/٢٥ هـ

شهادة تسجيل الشركة Company Registration Certificate

وزارة التجارة
Ministry of Commerce



الاسم التجاري للشركة : شركة آنا ستار للمقاولات (شخص واحد)
نوعها : ذات مسؤولية محدودة
جنسيتها : سعودي
مدة الشركة : تبدأ من : ١٤٤٥/٠٨/٢٥ هـ وتنتهي في :
مركزها الرئيسي : ٣٤٥٤ ، عويضة ، ٦٩٠٧
الرمز البريدي : ١٢٨٣٦
هاتف :
النشاط : للاطلاع على بيانات الأنشطة الرجاء مسح الرمز التجاري
رأس المال : ١٠٠,٠٠٠ ريال سعودي
المديرون : 1 محمد الياس صاحب خان
2
3
4
5
6
7
8
9
10
11
12
13
14
15
سلطات المدير/المديرون : حسب ما نص عليه عقد الشركة

يشهد مكتب السجل التجاري بمدينة الرياض : بأنه تم تسجيل الشركة المذكورة أعلاه بمدينة الرياض
وتنتهي صلاحية الشهادات في : ١٤٤٦/٠٨/٢٥ هـ بموجب الإيصال رقم : ٢٤٠٣٢١٩٥٢٤٤٩
وتاريخ : ١٤٤٥/٠٨/٢٤ هـ



To Verify The Information Of This Certificate Visit <http://qr.mc.gov.sa> يمكنك التحقق من صحة هذه الشهادة بالدخول على

+966 11 294 4444 | Riyadh 11162 | Kingdom of Saudi Arabia | المملكة العربية السعودية | www.mc.gov.sa MCgovSA @ f t y o

Email
info@ana-grp.com

Telephone
+966558490607

Website
www.ana-grp.com

CHAMBER OF COMMERCE CERTIFICATE

✉ **Email**
info@ana-grp.com

📞 **Telephone**
+966558490607

🌐 **Website**
www.ana-grp.com

شهادة اشتراك
Membership Certificate

غرفة الرياض
Riyadh Chamber



Membership No. :	914592	914592	رقم العضوية الموحد :
Date of Issue:	05/03/2024	2024/03/05	تاريخ الاصدار:
Membership Class :	Sixth	السادسة	درجة العضوية :
Riyadh Chamber Certifies			تشهد الغرفة التجارية الصناعية بالرياض بأن شركة آنا ستار للمقاولات
Commercial Registration No.	1010992357	1010992357	مقيدة بالسجل التجاري / الترخيص رقم :
Certificate Expires on	23/02/2025	2025/02/23	ينتهي سريان هذه الشهادة في



الخدمات الإلكترونية لغرفة الرياض - بوابة أعمال © E-Services Riyadh Chamber

920004565

- يلزم التحقق من الوثيقة عبر الرابط <https://mybusiness.chamber.sa> ، أو تطبيق (سند)
- للأجهزة المحمولة أو الرقم الموحد دون ادنى مسؤولية على الغرفة عن محتوى الوثيقة.
- تعد هذه الورقة من الوثائق الإلكترونية لغرفة الرياض، ويمنع تعديلها اول محاولة العبث بها وتصبح لاغية حال محاولة تعديلها وتعرض صاحبها للملاحقة القانونية.

✉ Email

info@ana-grp.com

Telephone

+966558490607

🌐 Website

www.ana-grp.com



TIN 3121007321 الرقم المميز
Certificate No. 100241101284962 رقم الشهادة
Certificate date 12/03/2024 تاريخ الشهادة



هيئة الزكاة والضريبة والجمارك
Zakat, Tax and Customs Authority

المملكة العربية السعودية
Kingdom of Saudi Arabia

شهادة تسجيل في ضريبة القيمة المضافة VAT Registration Certificate

تشهد هيئة الزكاة والضريبة والجمارك بأن المكلف أدناه مسجل في ضريبة القيمة المضافة بتاريخ ٢٠٢٤/٣/١٢ م
The Zakat, Tax and Customs Authority certifies that taxpayer below is VAT registered on 12/03/2024 AD

Taxpayer Name	شركة أنا ستار للمقاولات	اسم المكلف
VAT Registration Number	312100732100003	رقم التسجيل الضريبي
Effective Registration Date	2024/04/01	تاريخ نفاذ التسجيل
Taxpayer Address	الرياض، الرياض، عويضة، 12836	عنوان المكلف
CR / License Contact / ID No	1010992357	رقم السجل التجاري / الرخصة / العقد / الهوية
Tax Period	Quarterly-سنتوي-ربع	الفترة الضريبية
First Filing due date	2024/07/31	تاريخ استحقاق أول إقرار ضريبي

ملاحظة: كمكلفين مسجلين في ضريبة القيمة المضافة، لا يجوز لكم تحصيل ضريبة القيمة المضافة من عملائكم قبل تاريخ نفاذ التسجيل في الضريبة. و في حال تبين غير ذلك ستقوم هيئة الزكاة والضريبة والجمارك بتنفيذ الغرامات المستحقة

Note: As a VAT registered taxpayer, you are not allowed to collect VAT from your customers prior to the effective date of the tax registration. If otherwise approved, The ZAKAT, Tax and Customs Authority will impose the applicable penalties



لمسجل في ضريبة القيمة المضافة، لا يجوز لك تحصيل ضريبة القيمة المضافة من عملائك قبل تاريخ نفاذ التسجيل في الضريبة. في حال تبين غير ذلك، ستقوم الهيئة العامة للزكاة والضريبة والجمارك بتنفيذ الغرامات المستحقة.



LIST OF EQUIPMENT

✉ **Email**
info@ana-grp.com

☎ **Telephone**
[+966558490607](tel:+966558490607)

🌐 **Website**
www.ana-grp.com

Item	Number	Source
Habitat Block (6" top recess, fence post sleeves, drain holes installed)	8	Mack Industries, Brunswick, OH
SS40 Galvanized Fence Posts (2 3/8" OD)	22	Allied Tube & Conduit, Harvey, IL
2 3/8" Galvanized Fence Post Caps	22	Allied Tube & Conduit, Harvey, IL
2 3/8" Galvanized Chain-Link Fence Brace Band	36	Local Hardware Supply
1/2 " #16 Expanded Stainless Steel Mesh 4' x 8' sheets	6	McNichols, Cleveland, OH 44128
Carabineers	64	Local Hardware Supply
Nickel Plated Links	110	Local Hardware Supply
5/32" PVC Clothesline (100 ft/pkg)	6	Local Hardware Supply
1/4" to 1/2" Size Stone #9 Pea Gravel	5.5 yd ³ Delivered	Simak Trucking and Excavating N. Kingsville, OH
Wooden Decoys	6 & 6 spare	Mad River Decoy Waitsfield, VT 05673
Solar Powered Tern Call Box	1	Murremaid Music Boxes Bremen, ME 04551
Infrared, Motion Triggered Tiny W3 Camera with Security Box, Batteries & Solar Connector Cable	3	GG Telecom, Victoriaville, QC, Canada
Salvaged/Scrap 5" x 24" x 3/4" boards (non-treated)		Local Salvage
Driftwood		Local Shorelines
Miscellaneous hardware (screws, wire, nails)		Local Hardware Supply

CURRENT PROJECT REFERENCES

✉ **Email**
info@ana-grp.com

☎ **Telephone**
[+966558490607](tel:+966558490607)

🌐 **Website**
www.ana-grp.com

S NO	COMPANY NAME	PROJECT REFERENCE	MAIN CLIENT	COMPANY	REMARKS
1	Saudi Arabia bytur	RSMLI	Red Sea		Portable Modular offices 1800 SQM with furniture & accessories
2	Saudi Arabia bytur	Yatch club	Red Sea		2600 Portable Fences with precast foundation & clamp supplied to Road Hardscape Project
3	International contracting Co. ICC	Coast rectification project Aramco	ARAMCO		Engineer offices, including prayer rooms, nurse rooms, toilets, etc. 2200 5 SQM
4	Drake and scull	Nora university riyadh	Ministry of education		Site office 45.5x55 meters including security cabins & toilets
5	Al Bawani contracting	Ministry of industries	Ministry of industries		supply, installation of 620 people labor accomocation
6	Hyundai contracting	Jeddah south thermal power plant	Saudi electric city ministry of power		two labor residence cabins of 40x20 1600 SQM
7	Al Rushaid Construction Co. LTD.	Zulaf Hydrocarbon Processing camp facilities	ARAMCO		151x259 m ARCC Labor Camp supplied & install
8	World way contracting	Jafura Aramco pkg 2	ARAMCO		supplied & installed 2 mess halls and 2 portable site offices 1500 SMQ
9	Saudi Aramco/Petrofac	Dewatering- Jizan Refinery	Saudi Aramco/Petrofac		carried out the engineering and superstructure works of the 8,500-person camp
10	Saudi Aramco	Density Measurement- Qatif	Saudi Aramco		supply, installation of 700 people labor accomocation
11	SABIC- SAFCO	Seawater- Yanbu	SABIC- SAFCO		25 Site office 12 X 3.14m meters including toilets

S NO	COMPANY NAME	PROJECT REFERENCE	MAIN CLIENT	COMPANY	REMARKS
12	Doha Port Authority	Redevelopment of DOHA SHIOKH PROJECT, Qatar	TECHNITAL		supplied & installed site offices & security cabins and 3000 portable fences
13	Thales Group	ARAMCO ALMARJAN PROJECT	ARAMCO		1250 SQM site office supply and installation
14	Mofarreh AlHarbi & Partners	NEOM Project	NEOM		50 PCS Site office 12X3.75m meters
15	Shadeco	ARAMCO	Shadeco		1500 sqm site office with parking shades
16	Al-hossan contacting comany	Royal commission of jubail	ARAMCO		Site offices 1300 sqm with storage rooms
17	Saudi Ports Authority	Ras Al Zour Port	Worley Parsons		supply, installation of 480 people labor accommodation 1264 SQM
18	ARAMCO	Manifa Causeway	ARAMCO		Site office 985 SQM including toilets
19	Dammam Municipality	Dammam Water front development	Dammam Municipality		Riprap supply and installation, and excavation & site preparation
20	Royal Commission	Yanbu Water front development	Royal commission		supplied and installed Commercial (office), Mosque & security cabins fire rated
21	Saudi Electricity Co.	Shoaiba power plant	Mott McDonald		supplied and install site offices, mosque & labor accommodation
22	SEC(Saudi Electricity Company)	Shoaiba II Combined Cycle Power Plant Project	Daelim Industrial		supplied Workshop Equipment
23	SEC (Saudi Electricity Company)	Jeddah South Power Plant Project	Hyundai Heavy Industry		supplied Store Equipment, including portable racks, Dividers

S NO	COMPANY NAME	PROJECT REFERENCE	MAIN CLIENT	COMPANY	REMARKS
24	Petromin	Al hasa Aramco facility	ARAMCO		26 Pcs of 12x3.75 portable cabins, including Ac, lighting etc.
25	SEPCO	Saudi Aramco JAZAN IGCC Power Block Project (EPC-4)	Jazan Economic City		50 PCS Site office 12X3.75m meters
26	Dewatering- Yanbu Refinery	Saudi Aramco	Saudi Aramco		supplied fire rated portable site offices, with mosques, security cabins & furniture 1002 SQM
27	Saudi Electricity Co.	Jizan power plant	Mott McDonald		supplied and installed portable shades, temporary facility
28	AMAD AL BAEED TRADING EST.	Marjan Project	Cunado S.A		Supplied and installed Mosque 60 people capacity, fire rated guard house and portable fences
29	Gulf Co-Operation Symbols Contracting	MARJAN INCREMENT PROGRAM	Sinopec / Saudi Aramco		Construction of site facilities for Sinopec and Saudi Aramco 45,500 m2 land including: site preparation, fence and gates, asphalt and walk ways, 5,500 m2 office buildings for Saudi Aramco and Sinopec team, furniture and HVAC,
30	Doosan Enerbility	Jafurah Cogeneration Plant Project	ICEPCO power company		supplied and installed Portable site office 100x70 m, generator and furniture

S NO	COMPANY NAME	PROJECT REFERENCE	MAIN CLIENT	COMPANY	REMARKS
31	Saudi Oger	KAP-1	Ministry of Interior	 شركة سعودي أوجيه المحدودة SAUDI OGER LTD.	Supplied used portable cabins 55 PCS with AC and other accessories
32	Al Rashid Trading & Construction Company (RTCC)	KAP-2 C1	Ministry of Interior	 شركة الراشد للتجارة والمقاولات AL-RASHID TRADING & CONTRACTING Co.	Supplied & installed temporary facility & labor camp 1200 SQM
33	Saudi Binladin Gruoup	KAP-3	Ministry of Interior	 مجموعة بن لادن السعودية SAUDI BINLADIN GROUP	Manufactured Portable cabins, 65 PCs including transportation
34	Al Arrab Co. & RTCC	KAP-4	Ministry of Interior	 شركة العرب للمقاولات Al Arrab Contracting Co.	supplied 2500 portable fences and parking shades
35	Saudi Oger	King Abdulaziz Center for World Culture (KACWC)	Saudi Aramco	 شركة سعودي أوجيه المحدودة SAUDI OGER LTD.	Supplied mobile tower lights, and mobile generators
36	AKFA Contracting	King Khalid International Airport Extension (KKIA)	Ministry	 AKFA CONTRACTING	Supplied and installed 45 security cabins (fire-rated)
37	Al-Dafe Trading & contracting Co.	King abdllah economic city	Emaar		1085 sqm portable site office supplied and installed
38	Al Argan Group	Al Argan Project	Al Argan Group	 ALARGAN ALARGAN INTERNATIONAL REAL ESTATE COMPANY	supplied fiber houses for security guards and 1200 portable fences
39	Danway	Al hasa Aramco facility	ARAMCO	 DANWAY	manufactured and supplied 23 units of portable toilet and shower unit for labor
40	Enerco Energy contracting co	Saudi Aramco	ARAMCO	 انركو enerco Energy Equipment Rental Co.	Supplied and installed standard Aramco standard portable site office 1035 SQM

S NO	COMPANY NAME	PROJECT REFERENCE	MAIN CLIENT	COMPANY	REMARKS
41	Seder Group / Al Redwan company	Princess Al Anood Tower	Princess Al Anood Est.		Engineer offices, including prayer rooms, security cabins, toilets, etc. 3000 SQM
42	SEMECO	Tamkeen Tower	Tamkeen for Real Estate Devt.		supply, installation of 1103 people labor accomodation
43	R Sanabel	Majdou Tower	Awtad Real Estates Company		224 X 200 m R Sanabel Camp supplied & inst
44	Saudi Binladin Gruoup	ARQA Palace	ARQA Company		500 Metal doors supplied & Instl.
45	Beijing Emirates Int'l Construction company (BEC)	King Abdullah Jazan Housing	King Abdullah Jazan Housing		Water tanks security cabins Supplied & Instl.
46	Jawdat Contracting	National Sports Club in Tabuk	General Presidency of Youth Club		5 labor residence cabins of 2500 SQM
47	Saudi Oger	Kaust A & A Company	Saudi Aramco		400 Portable cabins with toilets included
48	Capelec	Kaust A & A Company	Saudi Aramco		202 Portable cabins with toilets included
49	Zuhair Fayez	Jazan Housing Project	King Abdullah Bin Abdul Aziz Foundation for Devt. Housing Dedicated His Parents Jazan		supply, installation of 1000 people labor accommodation
50	Masar Al Hadith	Najran univerist	Ministry Of Higher Education		40 Site office 12 X 3.14m including toilets
51	Al Mansouriyah Est.	King Abdul Aziz Hospital Ext.	KSU		14 Pcs of 12x3.75 portable cabins, including Ac, lighting etc.
52	KFU	King Faisal University Al-Hassa	Ministry of Higher Education		carried out the engineering and superstructure works of the 8,500-person camp

7/26/23, 1:08 PM

Aconex

Piotr Rozpedowski
AECOM

Final (WF-020834) 01-0000100215-IN-Quality - IFR_
WORKFLOW TRANSMITTAL

10/07/2023
ACM-WTRAN-043341

01 NEOM Bay (LOTL)
NEOM Bay
NEOM
Saudi Arabia



MAIL TYPE
Workflow Transmittal

MAIL NUMBER
ACM-WTRAN-043341

REFERENCE NUMBER
ACM-WTRAN-043341

Final (WF-020834) 01-0000100215-IN-Quality - IFR_

From Mr Piotr Rozpedowski - AECOM
To (3) Neom Pmc Region 01 - AECOM (+2 more...)
Cc (5) Mr Noel Mc Carthy - AECOM (+4 more...)
Sent Monday, 10 July 2023 9:50:01 PM AST (GMT +03:00)
Status N/A

DOCUMENT ATTACHMENTS (2)

(0 selected)

File	Document No	Revision	Revision Date	Title	Status
	01-620200-0000100215-TPE-CIV-CRS-000074	01	03/07/2023	0000100215/000 - CRS for Pre-Qualification of PRO-FRGW CARAVAN AND PREFAB BUILDINGS	A - Work May Proceed
	01-620200-0000100215-TPE-CIV-PQD-000008	01	03/07/2023	0000100215/000 - Pre-Qualification of PRO-FRGW CARAVAN AND PREFAB BUILDINGS	A - Work May Proceed

MESSAGE

Workflow Review History

The attached documents have completed the "01-0000100215-IN-Quality - IFR_" workflow with the following results :

This transmittal was automatically generated.

Doc No	Step	Participant	Review Outcome	Comments
01-620200-0000100215-TPE-CIV-PQD-000008	NEOM Review	P Rozpedowski	A - Work May Proceed	

<https://ksa1.aconex.com/hub/index.html>

1/2

7/26/23, 1:08 PM

Aconex

01-620200-0000100215-
TPE-CIV-CRS-000074

NEOM Review

P Rozpedowski

A - Work May Proceed

<https://ksa1.aconex.com/hub/index.html>

2/2

 **Email**
info@ana-grp.com

Telephone
+966558490607

 **Website**
www.ana-grp.com

AMAALA YACHT CLUB

NEW OFFICE 12X7.5 METER SANDWICH PANEL	03
LABORATORY 12X3.75	01
TRAINING 12X3.87	01
MESS HALL 12X3.85	01
12 METER OFFICE 3.85 (PORTABLE CABIN)	02



Engineer's - Comments		
Status Code		
<input type="checkbox"/> Accepted	<input checked="" type="checkbox"/> Accepted with Comments	<input type="checkbox"/> Revise and Resubmit
<input type="checkbox"/> Rejected	<input type="checkbox"/> Review not Required	

Photos of the cabin that have been fabricated for RSLMI to be included in the Material Submittal.
Amaala Technical

	
Document Number	1TB01005-005C02-SAB-MAT-CI-0001
Revision	C1
Accepted with Comments	
Mr Hesham Gabr - WS ATKINS & Partners Overseas	
Apr 19, 2023, 3:34 PM GMT+3:00	

AMAALA RED SEA MARINE LIFE INSTITUTE



✉ **Email**
info@ana-grp.com

☎ **Telephone**
+966558490607

🌐 **Website**
www.ana-grp.com

RED SEA PROJECT- JUBAIL

2600 PORTABLE FENCES WITH PRECAST
FOUNDATION & CLAMP SUPPLIED TO
ROAD HARDSCAPE PROJECT

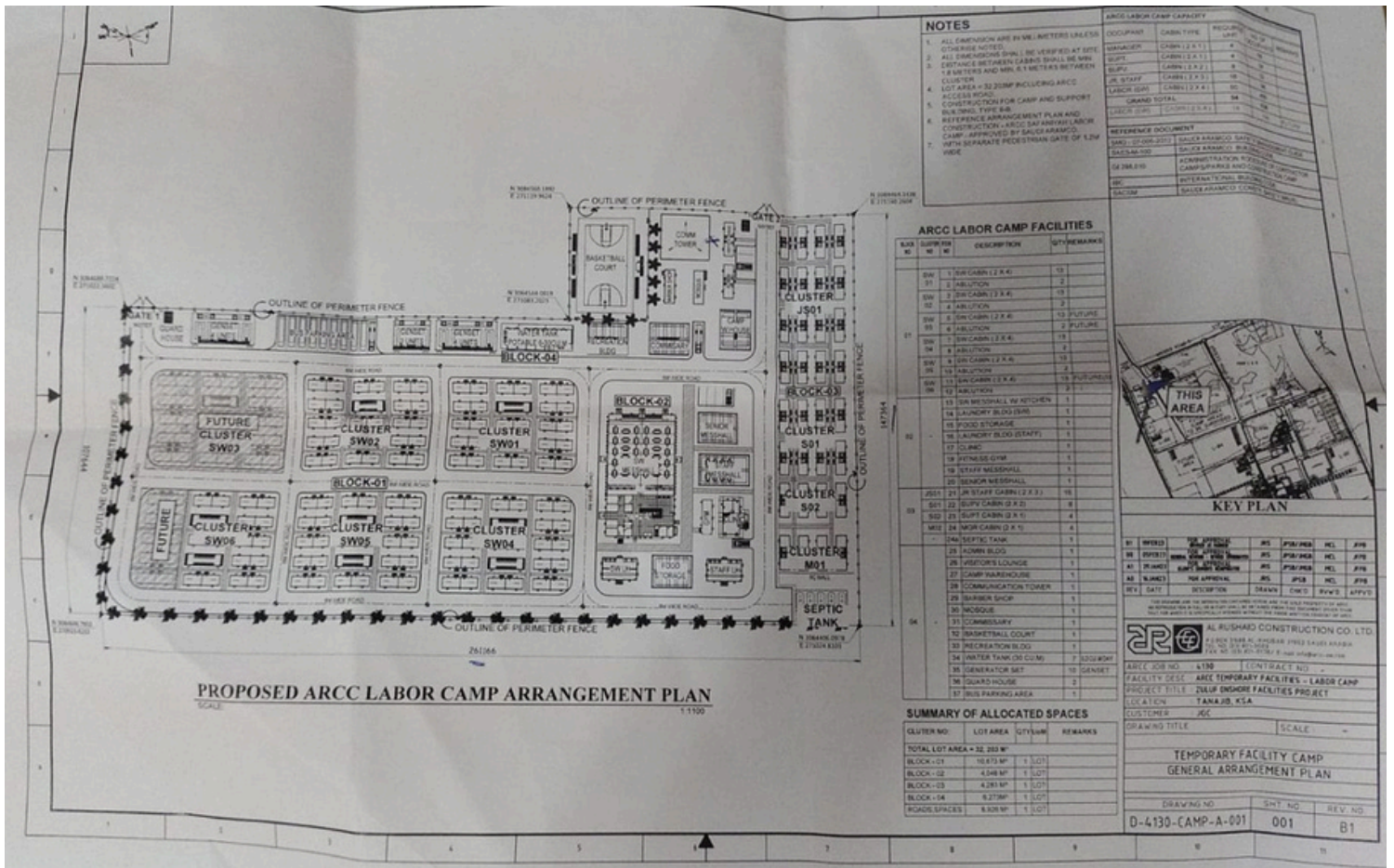


✉ **Email**
info@ana-grp.com

☎ **Telephone**
+966558490607

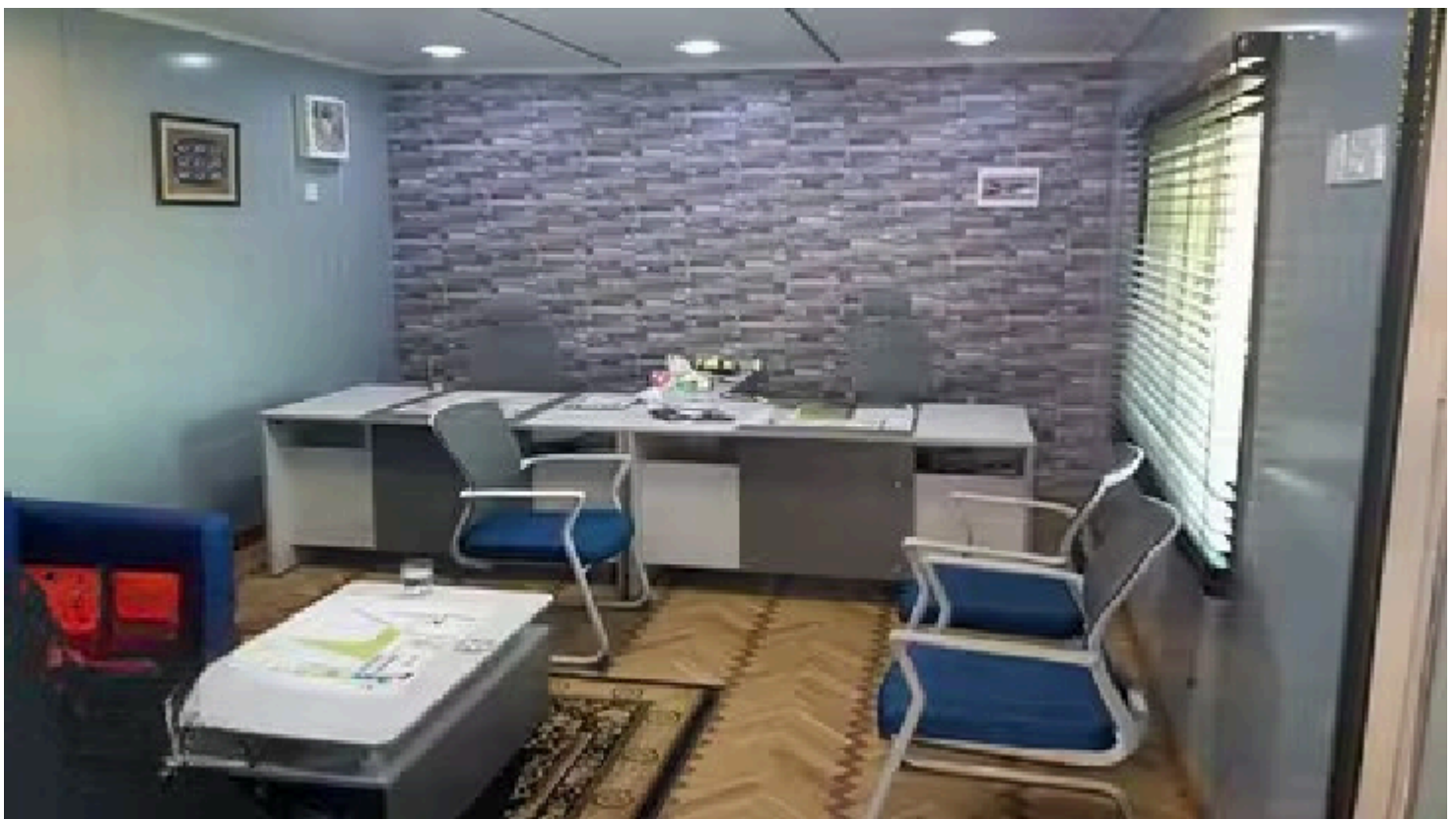
🌐 **Website**
www.ana-grp.com

ZULAF HYDROCARBON PROCESSING CAMP FACILITIES - ARAMCO PROJECT IN TANAJIB SAUDI ARABIA



RASMALI PROJECT

2 NEW MODULAR PORTABLE OFFICES WITH FURNITURE AND ACCESSORIES



✉ **Email**
info@ana-grp.com

☎ **Telephone**
+966558490607

🌐 **Website**
www.ana-grp.com

REDEVELOPMENT OF DOHA SHIOKH PROJECT, QATAR

SUPPLIED & INSTALLED SITE OFFICES
& SECURITY CABINS AND 3000
PORTABLE FENCES



✉ Email

info@ana-grp.com

☎ Telephone

+966558490607

🌐 Website

www.ana-grp.com

ARAMCO ALMARJAN PROJECT

50X25 METERS SITE OFFICE SUPPLY AND INSTALLATION



✉ Email

info@ana-grp.com

☎ Telephone

+966558490607

🌐 Website

www.ana-grp.com

NEOM PROJECT

50 PCS SITE OFFICE 12X3.75M METERS



 **Email**

info@ana-grp.com

Telephone

+966558490607

 **Website**

www.ana-grp.com

ARAMCO PROJECT

1500 SQM SITE OFFICE WITH PARKING SHADES



✉ Email

info@ana-grp.com

☎ Telephone

+966558490607

🌐 Website

www.ana-grp.com

ROYAL COMMISSION OF JUBAIL PROJECTS

SITE OFFICES 1300 SQM WITH STORAGE ROOMS



✉ **Email**

info@ana-grp.com

📞 **Telephone**

+966558490607

🌐 **Website**

www.ana-grp.com

RAS AL ZOUR PORT PROJECT

SUPPLY, INSTALLATION OF 480
PEOPLE LABOR ACCOMMODATION 1264
SQM



✉ **Email**
info@ana-grp.com

☎ **Telephone**
+966558490607

🌐 **Website**
www.ana-grp.com

MANIFA CAUSEWAY ARAMCO PROJECT

SITE OFFICE 985 SQM INCLUDING TOILETS



✉ **Email**
info@ana-grp.com

☎ **Telephone**
+966558490607

🌐 **Website**
www.ana-grp.com

SHOAIBA II COMBINED CYCLE POWER PLANT PROJECT

SUPPLIED WORKSHOP EQUIPMENT



✉ **Email**

info@ana-grp.com

📞 **Telephone**

+966558490607

🌐 **Website**

www.ana-grp.com

JEDDAH SOUTH POWER PLANT PROJECT

SUPPLIED STORE EQUIPMENT,
INCLUDING PORTABLE RACKS, DIVIDERS



AL HASA ARAMCO FACILITY PROJECT

26 PCS OF 12X3.75 PORTABLE CABINS,
INCLUDING AC, LIGHTING ETC.



SAUDI ARAMCO JAZAN IGCC POWER BLOCK PROJECT (EPC-4)

50 PCS SITE OFFICE 12X3.75M METERS



✉ **Email**
info@ana-grp.com

📞 **Telephone**
+966558490607

🌐 **Website**
www.ana-grp.com

JIZAN POWER PLANT PROJECT

50 PCS SITE OFFICE 12X3.75M METERS



✉ **Email**
info@ana-grp.com

☎ **Telephone**
+966558490607

🌐 **Website**
www.ana-grp.com

MARJAN PROJECT

SUPPLIED AND INSTALLED MOSQUE 60 PEOPLE CAPACITY, FIRE RATED GUARD HOUSE AND PORTABLE FENCES



MARJAN INCREMENT PROGRAM

CONSTRUCTION OF SITE FACILITIES FOR SINOPEC AND SAUDI ARAMCO 45,500 M2 LAND INCLUDING: SITE PREPARATION, FENCE AND GATES, ASPHALT AND WALK WAYS, 5,500 M2 OFFICE BUILDINGS FOR SAUDI ARAMCO AND SINOPEC TEAM, FURNITURE AND HVAC,



JAFURAH COGENERATION PLANT PROJECT

SUPPLIED AND INSTALLED PORTABLE
SITE OFFICE 100X70 M, GENERATOR
AND FURNITURE



✉ **Email**
info@ana-grp.com

☎ **Telephone**
+966558490607

🌐 **Website**
www.ana-grp.com

KING ABDULAZIZ CENTER FOR WORLD CULTURE (KACWC) PROJECT

SUPPLIED
LIGHTS,
GENERATORS

MOBILE
AND

TOWER
MOBILE



✉ **Email**
info@ana-grp.com

☎ **Telephone**
+966558490607

🌐 **Website**
www.ana-grp.com

KING KHALID INTERNATIONAL AIRPORT EXTENSION (KKIA)

SUPPLIED AND INSTALLED 45 SECURITY CABINS (FIRE-RATED)



KING ABDLLAH ECONOMIC CITY PROJECT

1085 SQM PORTABLE SITE OFFICE SUPPLIED AND INSTALLED



AL HASA ARAMCO FACILITY PROJECT

MANUFACTURED AND SUPPLIED 23
UNITS OF PORTABLE TOILET AND
SHOWER UNIT FOR LABOR



PRINCESS AL ANOOD TOWER PROJECT

ENGINEER OFFICES, INCLUDING
PRAYER ROOMS, SECURITY
CABINS, TOILES, ETC. 3000 SQM



✉ **Email**
info@ana-grp.com

☎ **Telephone**
+966558490607

🌐 **Website**
www.ana-grp.com

MAJDOUL TOWER PROJECT

224 X 200 M R SANABEL CAMP
SUPPLIED & INSTALL



✉ **Email**
info@ana-grp.com

☎ **Telephone**
+966558490607

🌐 **Website**
www.ana-grp.com

ARQA PALACE PROJECT

500 METAL DOORS SUPPLIED & INSTL.



KING ABDULLAH JAZAN HOUSING PROJECT

WATER TANKS \$ SECURITY CABINS SUPPLIED & INSTL.



NATIONAL SPORTS CLUB IN TABUK PROJECT

5 LABOR RESIDENCE CABINS OF 2500 SQM



KING ABDUL AZIZ HOSPITAL EXT. PROJECT

**14 PCS OF 12X3.75 PORTABLE
CABINS, INCLUDING AC, LIGHTING
ETC.**



KING ABDULLAH ECONOMIC CITY SAUDI ARABIA

CONSTRUCTION STAFF AND LABOUR
CAMP PROJECT IN PHASE 3 FOR
KING ABDULLAH ECONOMIC CITY
SAUDI ARABIA

56 PEOPLE RESIDENCY CAPACITY



STAFF AND LABOUR CAMP PROJECT

CONSTRUCTION OF STAFF AND LABOUR
CAMP PROJECT, 300 PEOPLE
CAPACITY,

15 NEW - RESIDENCIAL PORTABLE CABINS
AND 10 NEW - PORTABLE OFFICES
BUILDINGS, AND

25 REFABRICATED TOILET UNITS, AND 5
REFABRICATED - SECURITY CABINS
SUPPLIED TO AND 32 NEW/REFABRICATED -
WAREHOUSES SUPPLIED TO KING
ABDULLAH UNIVERSITY OF SCIENCE AND
TECHNOLOGY PROJECT IN SAUDI ARABIA



LABOR ACCOMMODATION

LABOR ACCOMMODATION IN PHASE 3 IN KING ABDULLAH ECONOMIC CITY 120 PEOPLE RESIDENCY CAPACITY



RABIGH SAUDI ARABIA PROJECT

20- SECURITY CABINS AND 150 - PARKING SHEDS - RABIGH SAUDI ARABIA PROJECT



✉ **Email**
info@ana-grp.com

☎ **Telephone**
+966558490607

🌐 **Website**
www.ana-grp.com

DOOSAN RABIGH POWER PLANT PROJECT

REFABRICATED LABOUR
CAMP PROVIDED TO DOOSAN
RABIGH POWER PLANT
PROJECT



✉ **Email**
info@ana-grp.com

📞 **Telephone**
+966558490607

🌐 **Website**
www.ana-grp.com

SEPCO III RABIGH POWER PLANT

65 PARKING SHEDS PROVIDED TO SEPCO III RABIGH POWER PLANT



✉ **Email**
info@ana-grp.com

☎ **Telephone**
+966558490607

🌐 **Website**
www.ana-grp.com

OTHERS (AS DEEMED NECESSARY)

 **Email**
info@ana-grp.com

Telephone
+966558490607

 **Website**
www.ana-grp.com

OUR CLIENTS



✉ Email
info@ana-grp.com

☎ Telephone
+966558490607

🌐 Website
www.ana-grp.com

**GENERAL: QA – CONTENTS PAGE,
TITLING, REVISION HISTORY,
DOCUMENT SUBMITTAL FORM, NEOM
DOCUMENT FORM, SIGNATURES,
DATES, STRUCTURE PAGE NUMBERING,
LEGIBILITY, SPELLING,
CONFLICTS/DUPLICATION, ETC.**





www.ana-grp.com

+966558490607 / info@ana-grp.com

 **Telephone**

+966558490607

 **Website**

www.ana-grp.com

 **Email**

info@ana-grp.com

ANNA STAR

*Thank
You*

 **Telephone**

+966558490607

 **Website**

www.ana-grp.com

 **Email**

info@ana-grp.com